

## European Solar and Energy Storage Solutions

# Are photovoltaic panels installed on the upper and lower sides



## Overview

---

Vertical (Portrait) Orientation: The longer side of the panel runs up and down.

2. Horizontal (Landscape) Orientation: The longer side of the panel runs side to side.

Vertical (Portrait) Orientation: The longer side of the panel runs up and down.

2. Horizontal (Landscape) Orientation: The longer side of the panel runs side to side.

Solar panels are typically installed horizontally to maximize their exposure to the sun's direct rays.

There are two ways of arranging solar modules in photovoltaic power stations, horizontal and vertical. Can solar panels be installed vertically?

Horizontal solar panels are so common, that it can come as a surprise to many that solar panels can be installed vertically. Vertical solar panel installation may be a valid option for your home. Not sure which direction your solar panels should be installed?

A trusted solar installer will be key to answering your questions.

Are solar panels horizontal or vertical?

You've probably seen some solar systems where the panels are installed in vertical orientation, and others in a horizontal orientation. This might leave you wondering, why are they different and does it matter if solar panels are horizontal or vertical?

The orientation of your solar panels doesn't affect the production of your system.

Are solar panels positioned & tilted?

Solar panels lie at the core of any solar energy system, and how they are positioned and tilted significantly impacts their capacity to harness solar

power efficiently. In this comprehensive guide, we will delve into the intricacies of optimizing solar panel orientation and tilt, ensuring you make the most out of your solar power system.

Why does solar panel orientation and angle matter in a solar power system?

Prior to understanding why solar panel orientation and angle matter in a solar power system, we need to know how a solar panel collects energy from the sun. Solar panel cells only collect a specific wavelength during absorbing radiant energy from the sun.

Which direction should solar panels face?

South is the best direction for solar panels to face overall. In nearly all situations, you will see the greatest utility bill savings and quickest payback period if your panels point south instead of in another direction. South-facing panels have superior economics for the following reasons: They allow for better solar battery utilization.

Does panel orientation affect the number of solar panels installed?

Panel orientation also has no effect on the number of panels that can be installed. Homeowners have the option to install them using differing orientations, depending on the shape of your roof. However, it is more efficient to have a consecutive block of solar panels installed using the same orientation— either vertical or horizontal.

## Are photovoltaic panels installed on the upper and lower sides

---



### The Impact of Installation Angle on the Wind Load of Solar Photovoltaic ...

The wind load characteristics on both sides of the photovoltaic panels were obtained, and the vortex structure characteristics were analyzed using the Q criterion. The ...

### A Full Guide to Photovoltaic Panel Installation and ...

Site Evaluation for Photovoltaic Panel Installation. Before embarking on a solar panel installation project, selecting the appropriate site for the panels is crucial. A proper site evaluation not only aids in determining the ...

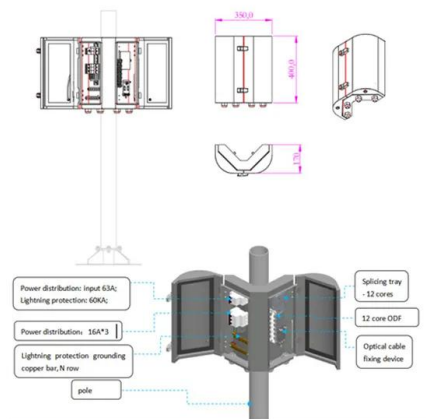


### Solar Panel Orientation and Tilt

Explore the pros and cons of professional solar panel installation versus a do-it-yourself approach to achieving the correct orientation and tilt. When installing solar panels with the correct orientation and tilt, you ...

### Rooftop photovoltaic solar panels warm up and cool down cities

Here we show that, in Kolkata, city-wide installation of these rooftop photovoltaic solar panels could raise daytime temperatures by up to 1.5 °C and potentially lower nighttime ...



## The Ultimate Guide to Transformer for Solar Power Plant

In addition, for the double split dry-type transformer, the input side of the two groups of split low-voltage coil its upper and lower arrangement, due to the impact of air convection, the lower coil ...

## The best angle and direction for solar panels [UK, 2024]

4 ???· The impact of direction on solar panel output. Your solar panel system's direction is one of the biggest factors in determining its output. This chart below uses an average of 26 ...



## Evaluation of the potential of solar photovoltaic panels installed ...

In addition, although the photovoltaic panel installed on the vehicle's bonnet has a lower nominal power than that installed on the roof (i.e., approximately 28% of the total solar ...



## Does It Matter If Solar Panels Are Horizontal Or Vertical?

The orientation of your solar panels doesn't affect the production of your system. In the US, panels are generally installed vertically by default unless you have a flat roof which better allows for horizontal panels ...



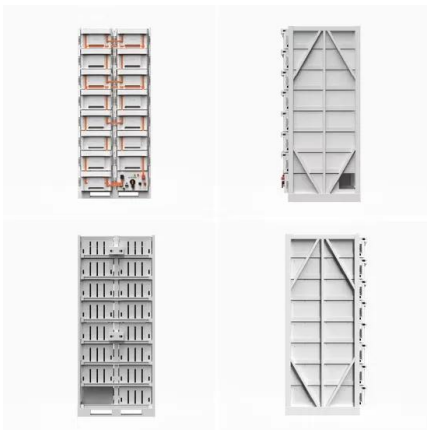
## A new cleaning method for solar panels inspired from the natural

In model (1) the PV panel is rigidly fixed at its lower edge, in model (2) a vertical wind shield is attached at the upper edge of the PV panel of the 1st model, and in model (3) a ...

## A Full Guide to Photovoltaic Panel Installation and Maintenance

Site Evaluation for Photovoltaic Panel Installation. Before embarking on a solar panel installation project, selecting the appropriate site for the panels is crucial. A proper site ...



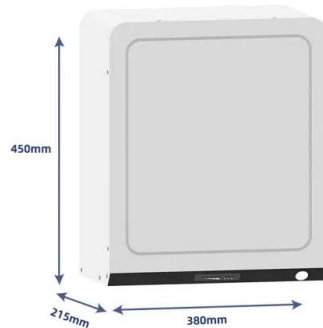


## Solar Panels Vertical Or Horizontal (Which ...)

Why Vertical Solar Panels Work. It's efficient to install solar panels vertically because it gives you more space to work with. Considering the size, you can fit more panels along the railing. This keeps your installation ...

## Marine Solar Systems - Planning and Installation Guide

Using the example above, a 36 cell panel will produce  $(36 \times 0.6) \times 5.5 = 119$  Watts in perfect conditions. 10 things that effect solar panel output in a marine installation : 1. Temperature - ...



## Solar Panels on Side of House: Comprehensive Guide ...

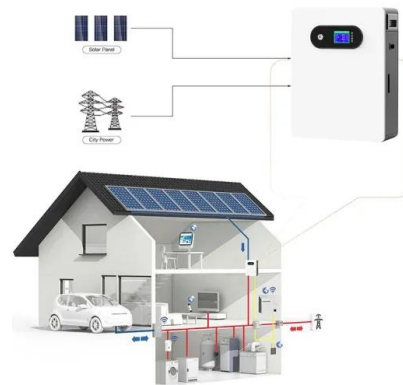
Yes, solar panels can be installed on their side, although for maximum efficiency, it is recommended to maintain the same orientation--either vertical or horizontal--for an entire block of panels. Can you have solar panels on a wall?



## How to Find the Best Orientation and Angle of Solar

...

??4%??· The tilt angle for solar panels varies specific to your location latitude, season, and time of day. Typically, an optimal angle sits between 30° and 45°. To maximize the energy conversion efficiency, use ...



## Photovoltaic Basics (Part 1): Know Your PV Panels for ...

The Photovoltaic Panel. In a system for generating electricity from the sun, the key element is the photovoltaic panel, since it is the one that physically converts solar energy into electricity; the rest is pure electronics, ...



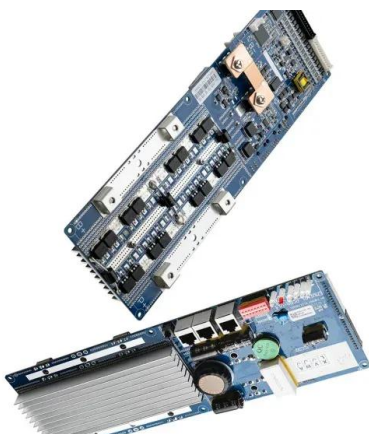
## What's the Best Angle for Solar Panels? , EnergySage

The bigger blockers tend to be shading, roof size, local electricity prices, and local solar power policies. Below, we'll get into the finer details of the ideal direction and angle for solar panels, how it varies ...



## The Ultimate Guide to Photovoltaic Modules , Solar ...

Bifacial solar panels are those panels which are able to generate power from both sides of the panel. These panels are installed on surfaces that are highly reflective. When considering solar panel and its ...



## Which Is More Important: Solar Panel Orientation or ...

The majority of solar panel systems are installed at the angle that maximizes sunlight exposure for that location. For most homeowners, the ideal solar panel installation angle is close or equal to the latitude of your ...



## Horizontal vs Vertical Solar Panel Installation

Homeowners have the option to install them using differing orientations, depending on the shape of your roof. However, it is more efficient to have a consecutive block of solar panels installed using the same ...

## Solar Panel Skirt

You've made the investment in a metal roof and selected PVKIT® as your rail-less solar module mounting solution.. Now you want your solar panel attachment to complement the beauty of your roof. PVKONCEAL is a module skirt that ...



## Contact Us

---

For catalog requests, pricing, or partnerships, please visit:  
<https://ssab-proiect.eu>