

## European Solar and Energy Storage Solutions

# Are photovoltaic panels the same size



## Overview

---

PV panels vary in size and in the amount of electricity they can produce.

PV panels vary in size and in the amount of electricity they can produce.

Panels are made up of small photovoltaic (PV) solar cells that are always the same size: roughly six inches long by six inches wide. Most residential solar systems have up to 60 PV cells.

There's no universal size for solar panels. Understanding where and how they fit on your roof is essential. It's important to know how much weight your roof can support when you buy solar panels.

The size and weight of solar panels vary depending on the make and model, with most residential panels measuring about 5.5 feet by 3 feet and weighing between 40 and 50 pounds.

Most residential panels have similar dimensions, but the exact measurements vary based on brand, power output, and type. Are all solar panels the same size?

If solar panels contain different numbers of solar cells, then they aren't all the same size. As a general rule, the more solar cells a solar panel has, the bigger the size. Sixty-cell panels are usually smaller than seventy-two-cell solar panels. But things get a bit more complicated when we look at the efficiency of solar cells.

What is the difference between residential and commercial solar panels?

The exact size of residential and commercial solar panels depends on the manufacturer and their specifications. Solar panels are made of a bunch of solar cells put together to capture sunlight. Residential solar panels typically use 60 solar cells, whereas commercial modules consist of 72 or 96 cells.

How many solar cells are in a solar panel?

Solar panels are made of a bunch of solar cells put together to capture sunlight. Residential solar panels typically use 60 solar cells, whereas commercial modules consist of 72 or 96 cells. The most common types of solar cells are monocrystalline and polycrystalline .

What is the standard size of a solar panel?

Individual solar cells come in a standard size of 6.14 inches square. This information is important because it means that solar panel sizes can't vary too much because of the standard size of their solar cells. While different brands and models of solar panels vary slightly in size and dimensions, their layout is the same.

Do smaller solar panels generate more power?

Larger solar panels will generate more power than smaller solar panels of the same efficiency. However, smaller, highly efficient solar panels can still generate a high-power wattage. How big is a solar cell?

Individual solar cells come in a standard size of 6.14 inches square.

What are the characteristics of a solar panel?

Solar Panel Structure: The solar panel dimension, composition, and photovoltaic (PV) technology. Average Solar Panel Size: Available roof space, solar panels size, and the load your roof can support. Solar Irradiance: Earth has many places with different sunlight hours and sums of solar energy.

## Are photovoltaic panels the same size

---

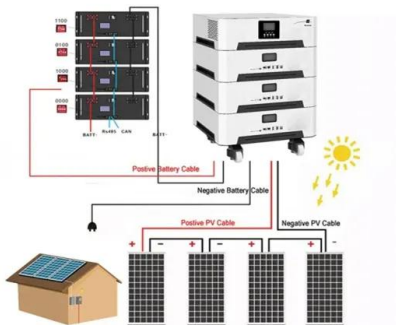


### A Comprehensive Guide to Combiner Boxes in Photovoltaic ...

In a photovoltaic system, a combiner box acts as a central hub that consolidates and manages the direct current (DC) output of multiple solar panels. Its main purpose is to simplify the wiring ...

### Solar Panel Dimensions and Sizes: Complete Guide

How big is a solar panel? There are three main sizes of solar panels to know: 60-cell, 72-cell, and 96-cell. For commercial and residential solar panels, the 60-cell and 72-cell solar panels size are most commonly used as the 96-cell ...



### Solar Panel Wiring Basics: Complete Guide & Tips to ...

All solar panel strings connected in parallel have to feature the same voltage, and they also have to comply with the NEC 690.7, NEC 690.8(A)(1), and NEC 690.8(A)(2). Modules need to be the same model in all ...

### Solar Panel Size and Weight Explained: How Big Are Solar Panels?

What is a standard solar panel size? The standard size for a solar panel is about 65 inches by 39 inches. An easier estimation of size is 5 feet by 3 feet. Solar panels differ in ...

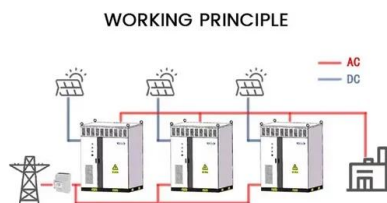


## Solar Panel kWh Calculator: kWh Production Per Day, ...

Here you can simply input what size solar panel you have (100W, 200W, 300W, and so on) and how many peak sun hours you get (average is about 5 hours). You get an estimate of how many kWh per day such a solar panel will ...

## Solar Panel Sizes (Energy Use & Dimensions Guide)

The only difference is the output and efficiency of the same solar panel size, which is determined by certain factors including the type used in the manufacturing process. Commercial Panel ...



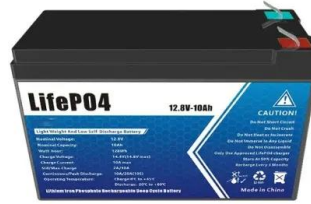
## How Big Are Solar Panels? Here's Their Typical Size and Weight

Not all solar panels are made the same way. Each vendor you talk to is likely to have a slightly different product, with different panel sizes and weights. The ideal size for a solar panel

## Solar Panel Size Guide: Which Size Of Solar Panel Is Best?

6 ???· Are all solar panels the same size? If solar panels contain different numbers of solar cells, then they aren't all the same size. As a general rule, the more solar cells a solar panel has, the bigger the size. Sixty-cell panels are ...

12V 10AH



## Solar Photovoltaic Panel Sizes: A Complete Guide

Thin-Film Panels. This solar panel is a photovoltaic (PV) panel that offers several advantages over the standard solar panel size, making them a good alternative. Pros. Some of the benefits of this solar panel type include: Sleek weight and ...

## Solar Panel Sizes, Dimensions & Weight

Standard residential solar panels contain 60 solar cells (or 120 half-cut solar cells) and typically generate anywhere from 350W to 500W of electricity. The size of these panels can range from 1.6m tall x 1.0m wide, to ...



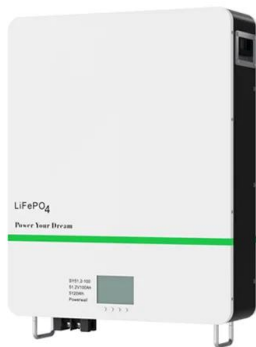
## Complete guide to solar panel size

120 half-cut cell solar panels are roughly the same size as 60 cell solar panels, and 144 half-cut cell solar panels are roughly the same size as 72 cell solar panels. The following table compares the sizes of some of the ...



## What Are the Common Solar Panel Sizes?

The size of solar panels with the same cell count varies slightly, depending on the brand and model. Still, most 60-cell solar panels have a size of 39" X 66" and most 72-cell solar panels have sizes of around 39" X ...



## Solar Panels Sizes and Weights (All Sizes)

These solar panels differ in both size and weight. On average, a solar panel can provide 15 watts per square foot. Let's start by breaking down the average dimensions of different solar panels by size. The same 60-cell ...

## A Comprehensive Solar Panel Size Chart: Find the ...

Learning about different solar panel types, like 60-cell, 72-cell, and 96-cell, is key to optimizing solar panel efficiency. When you match the system size with your energy needs and consider the climate, you make smart ...





## Comprehensive Guide to Solar Panel Types

In general, given the same physical footprint, conventional crystalline panels output more power than a thin-film panel of the same size. Solar Panel Types by Cost Monocrystalline panels (or modules as they are technically known) carry ...

## Average Solar Panel Dimensions and Sizes

Looking for solar panel dimensions to fit your home, or just wondering what the standard size is? Here are the top brands' solar dimensions. The reasoning behind having most solar panels be about the same size (as ...



## Contact Us

---

For catalog requests, pricing, or partnerships, please visit:  
<https://ssab-proiect.eu>