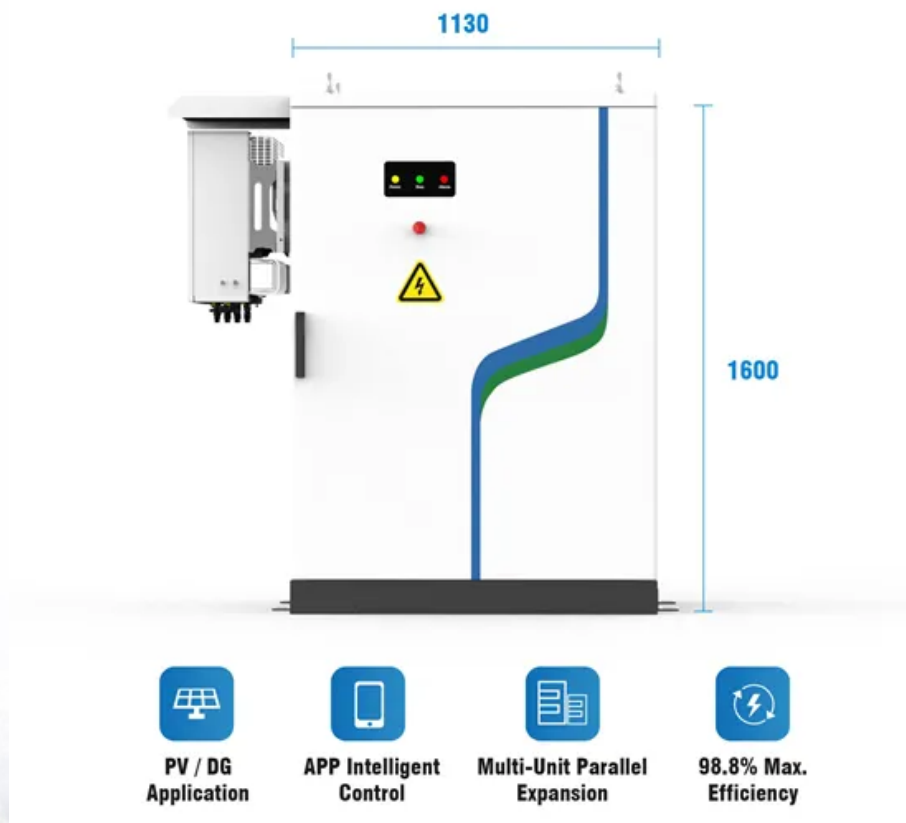


## European Solar and Energy Storage Solutions

# Basis for inspection of photovoltaic bracket wall thickness



## Overview

---

testing and visual inspection. Flash testing signifies the PV module maximum power output ( $P_{max}$ ) at standard test conditions and helps to evaluate the comparative analysis with the rated power of the module. Flash testing is performed as per IS 14286/IEC 61215 and visual inspection of modules is performed as per IS14286:2015/IEC 61215:2016.

testing and visual inspection. Flash testing signifies the PV module maximum power output ( $P_{max}$ ) at standard test conditions and helps to evaluate the comparative analysis with the rated power of the module. Flash testing is performed as per IS 14286/IEC 61215 and visual inspection of modules is performed as per IS14286:2015/IEC 61215:2016.

At present, PV power plants mainly adopt fixed metal or composite mounting bracket, PV tracker and polymer floating buoy for floating PV plants. TÜV NORD provides a comprehensive testing and certification schemes for all kinds of mounting bracket to verify the mechanical, electrical, weather resistance and other characteristics of the .

We test and certificate your company's photovoltaic components according to IEC/EN 62790. Learn more about our check routines for junction boxes [here!](#)  
Keywords: Photovoltaic components testing, Photovoltaic components certification, Solar PV system components, Junction box for PV systems, IEC 62790, EN 62790, TÜV Rheinland Created Date.

The National Renewable Energy Laboratory (NREL) has developed an online permitting and plan review process which has, in many cases, considerably speeded up these activities. Licensed PV designers and installers, and inspection organizations may gain access to the APP.

These guidelines provide a framework for the permitting and inspection of PV systems. There are two separate guidelines since jurisdictions normally treat the process in two steps. First is the plan check stage where the information is reviewed for accuracy and completeness. How to test a solar PV module?

Sampling for testing of PV modules comprises the procedures involved to

select a part of PV modules from the entire solar PV plant for inspection and it should adhere to standard sampling methods IS2500/ISO-2859 and field-testing norms as per IEC 61215/61646 standards.

Can a stand-alone photovoltaic system be tested?

Abstract: Tests to determine the performance of stand-alone photovoltaic (PV) systems and for verifying PV system design are presented in this recommended practice. These tests apply only to complete systems with a defined load. The methodology includes testing the system outdoors in prevailing conditions and indoors under simulated conditions.

Can a PV system be tested if a load changes?

These tests do not cover PV systems connected to an electric utility. Test results are only relevant to the system tested. If the PV system or load changes in any way, then the tests should be rerun on the modified system. It may be desired to run performance tests on the load (s).

What are the mounting and grounding procedures for a PV module?

The PV module mounting and grounding procedures used should follow the instructions provided in the installation manuals for the racking system and the PV module. The mounting structure or racking system wind loading and snow loading requirements are met, and the array setbacks from the roof edge meet fire codes.

What is a stand-alone PV system performance test?

Such tests, however, are beyond the scope of this recommended practice and may require specialized test equipment and procedures. Purpose: An evaluation of stand-alone PV system performance is needed to determine how well the PV array charges the battery and how well the battery is sized for the load.

Can a sample of solar modules help identify faults and underperformance?

For example, consider a 10MW hypothetical plant with X make modules along with Y make modules and their Module performance | Testing a sample of modules at an operational solar can help identify faults and underperformance in the wider plant, but which ones to choose?

Authors from Mahindra Teqo describe a new methodology they have

developed to

## Basis for inspection of photovoltaic bracket wall thickness

---



### 10 Pcs Solar Panel Mounting L Bracket, Thickness ...

Amazon : 10 Pcs Solar Panel Mounting L Bracket, Thickness 5.3mm Aluminum Alloy 6005 Support Hardware, for RV Boat Off Grid Roof, Solar Panel Motor Home Roof : Patio, Lawn & Garden. Skip to main content . Yachts, ...

### Analysis of the Impact Resistance of Photovoltaic Panels ...

on the calculation approach based on the effective thickness of a double-glass photovoltaic module. This paper explores the overall stiffness characteristics of a double-glass photovoltaic ...



### Balance of System (BOS) for Photovoltaic ??????

By surveillance of production process and inspection before shipment of mounting bracket for PV modules and its components, it could ensure that the products delivered to the power plants ...

### Theory and Application of Precision Ultrasonic Thickness Gaging

Commercial ultrasonic thickness gages are generally divided into two types: corrosion gages and precision gages. Corrosion gages are specifically designed for measuring the remaining wall ...



## Helical Ground Screw Piles for Foundation of Solar ...

Wall Thickness of pipe: 1.5mm-4.0mm: Diameter of Spiral: 150-250mm: Diameter of Flange: 160-250: Thickness of Flange: 8mm, 10mm: Material: Q235 ISO630 Fe A / DIN EN10025Fe 360 B. Nut aperture: 3-M16 uniform distribution: Surface ...

## Sampling guideline for inspection and testing of PV modules ...

testing and visual inspection. Flash testing signifies the PV module maximum power output (Pmax) at standard test conditions and helps to evaluate the comparative analysis with the rated ...



## Inspection and maintenance of solar photovoltaic system -

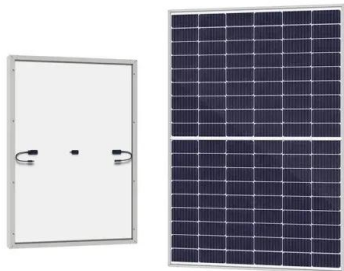
The maintenance of the solar photovoltaic system shall meet the following requirements: 1. All bolts, welds and supports shall be firmly and reliably connected. 2. The anti-corrosion coating ...



## Optimization design study on a prototype Simple Solar Panel

...

The solar panel bracket needs to bear the weight of the solar panel, and its strength structure needs to ensure that the solar panel will not deform or damage[9, 10]. Based on this, this ...



## Balance of System (BOS) for Photovoltaic ??????

At present, PV power plants mainly adopt fixed metal or composite mounting bracket, PV tracker and polymer floating buoy for floating PV plants. TÜV NORD provides a comprehensive ...

## Wall-Thickness Measurement Sensor for Pipeline Inspection

...

Abstract: An electromagnetic acoustic transducer (EMAT) is presented for excitation and detection of linear polarised shear waves at normal incidence with the use of a horizontal magnetisation ...





## DESIGN AND INSTALLATION OF LIGHT STEEL EXTERNAL ...

1.3 External wall systems In multistorey framed construction, it is common practice to use light steel external wall systems to create a 'rapid dry envelope' supporting the external cladding. ...

## Maintenance of solar PV systems according to the IEC 62446-1

Proper maintenance is necessary for the safe and reliable functioning of long-term solar power generation systems for decarbonization. So conducting electrical testing on the system ...



## Wall Thickness Measurements with UT Sensors

Inspection is the practice of examining the physical condition of materials, components, or entire pieces of equipment in order to determine if and for how long it will operate as intended. While there are many methods for ...

## Inspection and maintenance of solar photovoltaic ...

The maintenance of the solar photovoltaic system shall meet the following requirements: 1. All bolts, welds and supports shall be firmly and reliably connected. 2. The anti-corrosion coating on the support surface shall not ...



## Nondestructive Wall Thickness Analysis & Inspection Services

As a manufacturing operation, you want to keep costs to a minimum and product quality at its highest. Wall thickness is one of many parameters that must be accurate to produce viable ...

## Contact Us

---

For catalog requests, pricing, or partnerships, please visit:  
<https://ssab-proiect.eu>