

European Solar and Energy Storage Solutions

British Indian Ocean Territory accumulo fotovoltaico industriale



Overview

The British Indian Ocean Territory (BIOT) is an Overseas Territory of the United Kingdom situated in the Indian Ocean, halfway between Tanzania and Indonesia. The territory comprises the seven atolls of the Chagos Archipelago with over 1,000 individual islands, many very small, amounting to a total land area of.

knew of the Chagos Islands, which were known as Fōlhavahi in the northern Maldives, and Hollhavai in the southern Maldives. Hollhavai also referred to other islands scattered throughout the Indian Ocean, such as.

1002 (NP 1002) is directly present in the territory, and is composed of both and personnel. NP 1002 is responsible for civil administration and enforcement. Its members are tasked with policing and carrying out customs.

The British Indian Ocean Territory (Constitution) Order 2004 states that "no person has the right of abode" in the territory as it "was constituted and is set aside to be available for the defence purposes of the and.

The , started by the descendants of exiled Chagossians, has represented the islands in , including the . .

As a territory of the United Kingdom, the head of state is . There is no Governor appointed to represent the King in the territory, as there are no permanent inhabitants (as is also the case in and.

The territory is an archipelago of 58 islands covering 56 square kilometres (22 sq mi). The largest island is , which at 32.5 square kilometres (12.5 sq mi) accounts for about half of the territory's total land area. The rest of the island's are much smaller, with the.

All economic activity is concentrated on , where are located. Construction projects and the operation of various services needed to support the military installations are carried out by military, and contract employees from Britain.

British Indian Ocean Territory (BIOT) is a British Overseas Territory with a population of approximately 2,300 people. It covers an area of about 60 square kilometres. The territory is an archipelago of 58 islands.

British Indian Ocean Territory accumulo fotovoltaico industriale

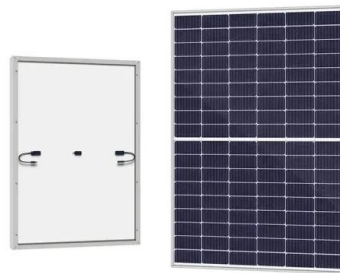


????????

????????(??: British Indian Ocean Territory,??BIOT)????????????????,????????2300??????????,????????60?????.
????????????????,????????????????,????6????71?30????????
????????????????

????????

????????(??:British Indian Ocean Territory)????????
????????,????????????????,????????????(Chagos Archipelago),????2300????????????,???????? ...



????????????

????????????(????????????????????): British Indian Ocean Territory)????????????????????2300????????????????????



Território Britânico do Oceano Índico - Wikipédia, a enciclopédia ...

O Território Britânico do Oceano Índico é um território britânico ultramarino situado no meio do oceano Índico, aproximadamente a metade do caminho entre a África e a Indonésia. O território compreende os sete atóis do arquipélago de Chagos, com mais de mil ilhas individuais -- sendo a maioria muito pequenas -- centradas em 6° S, 71°30' E, que totalizam uma área terrestre ...



British Indian Ocean Territory

The British Indian Ocean Territory (BIOT) is an Overseas Territory of the United Kingdom situated in the Indian Ocean, halfway between Tanzania and Indonesia. The territory comprises the seven atolls of the Chagos Archipelago with over 1,000 individual islands, many very small, amounting to a total land area of 60 square kilometres.

Geography of the British Indian Ocean Territory

The British Indian Ocean Territory (BIOT) is an archipelago of 55 islands in the Indian Ocean, located south of India. It is situated approximately halfway between Africa and Indonesia . The islands form a semicircular group with an open sea towards the east.



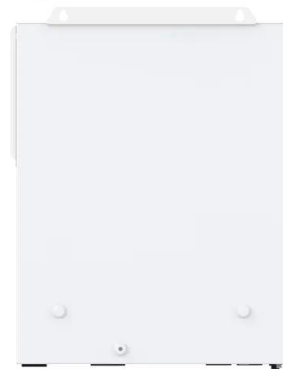
British Indian Ocean Territory

The British Indian Ocean Territory (BIOT) is an Overseas Territory of the United Kingdom situated in the Indian Ocean, halfway between Tanzania and Indonesia. The territory comprises the seven atolls of the Chagos Archipelago with over 1,000 individual islands, many very small, amounting to a total land area of 60 square kilometres (23 square



Revised Regulations , British Indian Ocean Territory

Revised Regulations of the British Indian Ocean Territory Proclamation 2024; Revised Regulations etc. of BIOT - Chapter F. The Immigration (Exemption) Regulations 1971 F.1; The Prohibited Imports & Exports Control Order 2009 F.2; The BIOT (Immigration) Order Notice of Exemption Order 2017 F.3; Revised Regulations etc. of BIOT - Chapter G



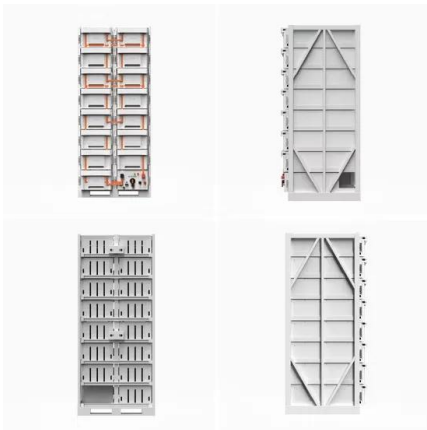
Brytyjskie Terytorium Oceanu Indyjskiego - Wikipedia, wolna

...

British Indian Ocean Territory) - terytorium zależne Wielkiej Brytanii, obejmujące archipelag Czagos (ang. Chagos), z których największa to Diego Garcia (7°20'S 72°25'E / -7,333333 72,416667).

???????

???????(?:British Indian Ocean Territory)???????
??????,????????????,????????????(Chagos Archipelago),?????2300????????,????????60?????



British Indian Ocean Territory

The British Indian Ocean Territory (BIOT) is an Overseas Territory of the United Kingdom situated in the Indian Ocean, halfway between Tanzania and Indonesia. The territory comprises the seven atolls of the Chagos Archipelago with over 1,000 individual islands, many very small, amounting to a total land area of 60 square kilometres. The largest and most southerly island is Diego ...

British Indian Ocean Territory????????????

British Indian Ocean Territory????????????????????
?":???"?????";????????,??"?"???,?"????????????,??
????????????????????



Territoire britannique de l'océan Indien -- Wikipédia

Le territoire britannique de l'océan Indien [2] (en anglais : British Indian Ocean Territory, BIOT) est un territoire britannique d'outre-mer situé dans le centre de l'océan Indien.Son étendue territoriale a évolué dans le temps pour se limiter actuellement à l'archipel des Chagos.La

souveraineté du Royaume-Uni sur cet archipel est contestée par Maurice et les Maldives [3].



British Indian Ocean Territory

Formerly administered as part of the British Crown Colony of Mauritius, the British Indian Ocean Territory (BIOT) was established as an overseas territory of the UK in 1965. A number of the islands of the territory were later transferred to the Seychelles when it attained independence in 1976.



Seabreeze Village Map

Location: British Indian Ocean Territory, South Asia, Asia; View on OpenStreetMap; Latitude-7.28821° or 7° 17' 18" south. Longitude. 72.3814° or 72° 22' 53" east. Open Location Code. 6J4JP96J+PH. OpenStreetMap ID. node 726790492. OpenStreetMap Feature. place=-village.

Inverter centralizzati , Fimer Spa

Gli inverter centralizzati FIMER sono progettati per impianti fotovoltaici di grandi dimensioni, come ad esempio strutture industriali e grandi edifici o impianti a terra. L'offerta di inverter centralizzati FIMER include gli inverter della serie PLUS, PVS800 e PVS980 con potenza dai 100 kW a 5 MW.





British Indian Ocean Territory

The British Indian Ocean Territory prior to the Seychelles's independence in 1976. The land at bottom left is the northern tip of Madagascar. (Desroches is not labelled, but is a part of the Amirante Islands.) Map of the British Indian Ocean Territory since 1976. The territory is an archipelago of 58 islands covering 56 square kilometres (22 sq

British Indian Ocean Territory: Negotiations

On Thursday 3 October, my right honourable and learned friend the Prime Minister and Mauritian Prime Minister Jugnauth made an historic announcement: after two years of negotiations and decades of disagreement, the United Kingdom and Mauritius have reached a political agreement on the future of the British Indian Ocean Territory. The treaty is neither ...



???????

6°00'S 71°30'E / 6.000°S 71.500°E
 ??????(?:British Indian Ocean Territory,??BIOT)
)????????????,????????2300????????,????60?
 ??? ?????????????,????????????,????6??? ...

British Indian Ocean Territory

The British Indian Ocean Territory (BIOT) comprises some 2300 tropical islands of the Chagos Archipelago in the Indian Ocean, about one-half the way from Africa to Indonesia, around

6°S, 71°30'E is an Overseas Territory of the United Kingdom (UK). Diego Garcia, the largest and southernmost island, occupies a strategic location in the central Indian Ocean and ...



Contact Us

For catalog requests, pricing, or partnerships, please visit:
<https://ssab-proiect.eu>