

European Solar and Energy Storage Solutions

Can solar power generation be connected to the mains



✓ IP65/IP55 OUTDOOR CABINET

✓ OUTDOOR TELECOM CABINET

✓ OUTDOOR ENERGY STORAGE CABINET

✓ 19 INCH



Overview

Indeed, a photovoltaic system can be connected to the building electrical installation at different places: to the main low-voltage (LV) switchboard, to a secondary LV switchboard, or upstream from.

Indeed, a photovoltaic system can be connected to the building electrical installation at different places: to the main low-voltage (LV) switchboard, to a secondary LV switchboard, or upstream from.

Any electricity produced by the solar electricity system but not needed by your house at the time it is produced is simply fed into the mains grid, with a feed-in tariff paid to the system owner.

How to connect solar panels to mains?

Step 1: Turn off the mains supply Before you start connecting your solar panels to the mains, you will need to turn off the mains supply to your property. Step 2: Connect the inverter Once the mains supply has been turned off, you can begin connecting the inverter. Step 3: Connect the inverter to the mains supply . Step 4: Turn on the mains supply .

Most solar panel installations throughout the U.S. are connected to the grid. With grid-tied systems, you can draw power from the power grid when your solar panel system isn't producing electricity. Why do solar panels need to be connected to the grid?

The simple answer is that remaining connected to the grid allows your home to draw additional power when solar panels can't generate enough electricity, including nights and cloudy days.

Should I connect my solar PV system to my existing electrical system?

When hooking up your solar PV system to the existing electrical system, it's crucial to tread carefully. A faulty connection might lead to equipment overload, and inspectors might not catch the mistake right away.

How can solar energy be integrated?

By 2030, as much as 80% of electricity could flow through power electronic devices. One type of power electronic device that is particularly important for solar energy integration is the inverter. Inverters convert DC electricity, which is what a solar panel generates, to AC electricity, which the electrical grid uses.

How can solar power and the grid work together?

Programs like net metering and time-of-use rates are helping solar power and the grid work better together, but more can be done to adapt to the needs of solar-powered homes. Solar power helps the grid in many different ways, such as smoothing out the demand curve, reducing grid stress, and lowering the cost of grid upgrades and maintenance.

Can solar power go back into the grid?

At the same time, your home can also push additional power back into the grid when your home doesn't need all of the electricity being generated, such as in the middle of a sunny day when everyone is away from the house. For most homes, your residential solar power system will probably be grid-tied, more commonly known as on-the-grid.

How do I connect a grid-tied solar panel system?

Always refer to the NEC code in effect or consult a licensed electrician for safety and accuracy. There are two basic approaches to connecting a grid-tied solar panel system, as shown in the wiring diagrams below. The most common is a "LOAD SIDE" connection, made AFTER the main breaker.

Can solar power generation be connected to the mains



How to connect solar energy to the mains , NenPower

When it comes to integrating solar energy installations with existing mains electricity networks, evaluating compatibility is the cornerstone of success. This involves understanding the technical aspects such as voltage ...

New South Wales Solar Power System Grid Connection Rules & Process

Learn the steps for connecting your solar power system to the grid in Sydney and New South Wales. Grid connection information for NSW. Solar Quotes. It's a relatively straightforward ...



How to connect a PV solar system to the utility grid

There are two basic approaches to connecting a grid-tied solar panel system, as shown in the wiring diagrams below. The most common is a "LOAD SIDE" connection, made AFTER the main breaker. The alternative is a "LINE OR ...

Solar system size limits: How much does your local ...

We have reviewed all the power networks in

Australia to determine how much solar can be added and whether you will be permitted to export. If your home is connected to the power grid, then whether you ...



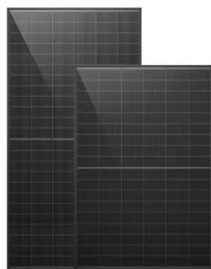
Solar Integration: Inverters and Grid Services Basics

Types of Inverters. There are several types of inverters that might be installed as part of a solar system. In a large-scale utility plant or mid-scale community solar project, every solar panel might be attached to a single central inverter. String ...

Solar Integration: Inverters and Grid Services Basics

In order to provide grid services, inverters need to have sources of power that they can control. This could be either generation, such as a solar panel that is currently producing electricity, or storage, like a battery system that can be ...

ESS



How Solar Power And The Grid Work Together

The simple answer is that remaining connected to the grid allows your home to draw additional power when solar panels can't generate enough electricity, including nights and cloudy days. At the same time, your home can ...

Solar Systems Integration Basics

By 2030, as much as 80% of electricity could flow through power electronic devices. One type of power electronic device that is particularly important for solar energy integration is the inverter. Inverters convert DC electricity, which is

...



PV Interconnection: Load-Side vs. Line-Side

The main panel is connected to the grid. If there are loads on the main panel, then some or all of that PV source current will flow to the loads. If there are no loads, the current will flow towards the loads on the grid.

Section 3: Grid-connected solar explained , solar.vic.gov

Most solar customers choose a mains grid-connected system for the reliability that such a system offers. which dictates how much excess solar generation you can feed back into the grid for ...



Connecting photovoltaic production to your electrical ...

Indeed, a photovoltaic system can be connected to the building electrical installation at different places: to the main low-voltage (LV) switchboard, to a secondary LV switchboard, or upstream from the main LV switchboard. ...



Solar Interconnection Methods (Full Guide)

Downsizing the main can be used in combination with the 120% rule to connect larger solar PV systems. In the example below, an 80A backfeed breaker is connected on the end of a 200A panel by downsizing the main to ...



Photovoltaic power plants in electrical distribution networks: a review

1 Introduction. Among the most advanced forms of power generation technology, photovoltaic (PV) power generation is becoming the most effective and realistic way to solve ...

Contact Us

For catalog requests, pricing, or partnerships, please visit:
<https://ssab-proiect.eu>