

## European Solar and Energy Storage Solutions

# Eco star energy solutions Svalbard and Jan Mayen



## Overview

---

What is the difference between Svalbard and Jan Mayen?

Svalbard is an archipelago in the Arctic Ocean under the sovereignty of Norway, but is subject to the special status granted by the Svalbard Treaty. Jan Mayen is a remote island in the Arctic Ocean; it has no permanent population and is administered by the County Governor of Nordland.

How can Svalbard maintain a secure and sustainable supply?

Furthermore, the case found that the best long-term solution for Svalbard to maintain a secure and sustainable supply would be to integrate a mix of renewable energy technologies. Some of these technologies include: solar panels (PV), wind turbines, heat pumps connected to geothermal and both heat and electricity storage.

Can wind and solar power be used in Svalbard?

23) This approach is supported by an earlier case study prepared by The Nordic Council of Ministers (2018) titled 'De-carbonising Svalbard', 24) which suggests that wind and solar power used in combination with both electric boilers and heat pumps would provide ample electrical supply.

How has Norway reinvented Svalbard's economy?

During this period, towns were built around commercial coal mining activity. Although coal mining is still present, activity is dwindling and Norway has reinvented Svalbard's economy by transitioning towards three main industries: scientific research, education and tourism. 2).

Who owns the Svalbard coal mine?

The company facilitates and supports the coal mining industry as well as the community. Situated in Longyearbyen, Svalbard's administrative capital and largest settlement 6) the other active coal mine is run by the Norwegian state-owned enterprise Store Norske.

How has Norway diversified its activity in Svalbard?

Besides tourism, Norway has further diversified its activity on Svalbard by investing in high-level Arctic research. Norway has transformed the ex-mining town of Ny-Ålesund into an international Arctic research hub and established The University Centre in Svalbard (UNIS) in 1993.

## Eco star energy solutions Svalbard and Jan Mayen



### Deep-sea mining to support green transition? The Norwegian ...

The area potentially concerned stretches from Svalbard to Jan Mayen Island, covering 280 000 square kilometers of Arctic seabed. Despite protests and warnings from environmental organizations, scientists and many politicians, Norway has decided to go ahead with the project.

### Svalbard y Jan Mayen

Bandera de Noruega, utilizada para representar a Svalbard y Jan Mayen Ubicación de Svalbard. Svalbard y Jan Mayen es una denominación utilizada por la ISO 3166-1 [1] con fines estadísticos, en el que se agrupan dos territorios de Noruega con jurisdicciones separadas: Svalbard y Jan Mayen.. Tanto Svalbard como Jan Mayen son "parte del Reino de Noruega", aunque no están ...

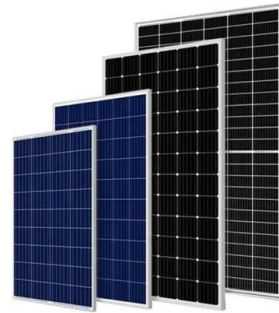


### Svalbard and Jan Mayen Islands , Tracking SDG 7

1 World Bank Income Classification as of the Fiscal Year 2023 2 GDP, Power Purchasing Parity (constant 2017 international \$) from the World Development Indicators 3 Population, total from the World Development Indicators

## La guía completa para viajar a Svalbard y Jan Mayen ...

Explorando lo desconocido: todo lo que tienes que saber para viajar a Svalbard y Jan Mayen (Noruega) Si eres uno de esos viajeros aventureros que están buscando escapar del mundanal ruido y encontrar ...



## Eco-Star Energy Solutions , Home , Commercial Energy Savings

ECO-STAR ENERGY SOLUTIONS is a premier Energy Services Company (ESCO) that delivers technical expertise and creative custom energy saving solutions for commercial lighting, refrigeration, and HVAC. Our number one priority is to make it easy for your company to implement intelligent decisions when it comes to saving energy and money.

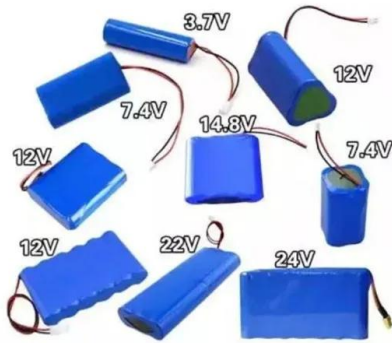
## Svalbard and Jan Mayen

Svalbard and Jan Mayen (Norwegian: Svalbard og Jan Mayen, ISO 3166-1 alpha-2: SJ, ISO 3166-1 alpha-3: SJM, ISO 3166-1 numeric: 744) is a statistical designation defined by ISO 3166-1 for a collective grouping of two remote jurisdictions of Norway: Svalbard and Jan Mayen.



## Svalbard and Jan Mayen Earthquakes Today: Latest Quakes

Complete list of all recent quakes in Svalbard and Jan Mayen, today or recently. Updated in



near real-time, detailed maps, info and stats. Estimated combined seismic energy released:  $2.1 \times 10^{13}$  joules (5.79 gigawatt hours, equivalent to 4985 tons of TNT or 0.3 atomic bombs!) , about seismic energy. Felt a quake? Report it!

## Abstract EGU23-1119

A transition to renewable energy is becoming increasingly more urgent in the High Arctic. In Svalbard (78°N), the previously coal based energy system is now, with a short transition period with diesel, moving to a completely renewable off-grid system. Both solar and wind energy are possible contributors to the energy mix.



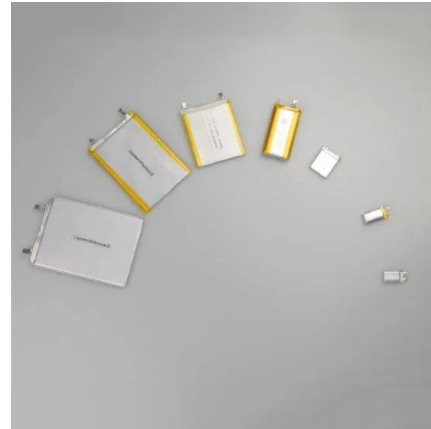
## Svalbard will be a showcase for renewable energy solutions in ...

Longyearbyen and Svalbard are facing a huge energy transition. UNIS, Store Norske and SINTEF have therefore entered into an agreement on strategic cooperation within renewable energy systems adapted to Arctic conditions. The goal is to make Svalbard a showcase for renewable energy solutions in the Arctic.

## Solving The Agenda: 11.15

- ENERGY IN THE WEST NORDICS AND THE ARCTIC
- oCO<sub>2</sub> targets based on IEA policy scenarios 1.
  - Electrification of road transport 2.
  - Igaliku hybrid energy supply 3.
  - Electrification of fishing vessels 4.
  - Tourism 5.
  - Decarbonizing Svalbard Scenario

Analysis: Case Studies: CO<sub>2</sub> tonnes per capita  
Greenland Iceland Faroe Islands Svalbard and  
Jan Mayen



????????

????????(???: Svalbard og Jan Mayen,ISO 3166-1  
?????:SJ,ISO 3166-1 ??????:SJM,ISO 3166-1 ??????  
?:744)????????????????,????????????????????  
?? ?????????????????,??????????

## Svalbard e Jan Mayen

Svalbard e Jan Mayen (in norvegese Svalbard og Jan Mayen) è una classificazione statistica definita dallo standard ISO 3166-1 [1] di due territori insulari della Norvegia settentrionale (Isole Svalbard e Jan Mayen). Svalbard e Jan Mayen sono anche accomunate dallo stesso dominio di primo livello nazionale, .sj.



## Svalbard and Jan Mayen Employer of Record (EOR) , Rivermate

A comprehensive guide to employing staff in Svalbard and Jan Mayen, covering everything from benefits and taxes to remote work laws, termination procedures, and more. for employers to have a thorough understanding of the unique employment landscape and to consider



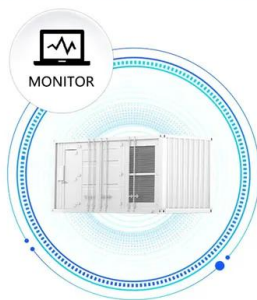
alternative hiring solutions, such as partnering with an Employer of Record

## Svalbard und Jan Mayen

Im norwegischen Sprachgebrauch heißt die Inselgruppe Svalbard („kühle Küste“). Jan Mayen ist eine 373 km<sup>2</sup> große Insel ca. 650 km nordöstlich von Island in der Grönlandsee und ist politisch gesehen ein integraler Teil Norwegens, gehört jedoch zu keiner der norwegischen Provinzen. Die Inselgruppe Spitzbergen liegt nördlich des



SUPPORT REAL-TIME ONLINE  
MONITORING OF SYSTEM STATUS



## Svalbard and Jan Mayen

Svalbard and Jan Mayen is a statistical designation defined by ISO 3166-1 for a collective grouping of two remote jurisdictions of Norway: Svalbard and Jan Mayen. While the two are combined for the purposes of the International Organization for Standardization (ISO) category, they are not administratively related. This has further resulted in the country code top-level ...

## Yearly & Monthly weather

Longyearbyen, Svalbard and Jan Mayen - Climate and weather forecast by month. Detailed climate information with charts - average monthly weather with temperature, pressure, humidity, precipitation, wind, daylight, sunshine, visibility, and UV index data. On the other hand, maximum daylight is experienced during the mid-year months of June and July, ...



## Deep-sea mining to support green transition? The ...

The area potentially concerned stretches from Svalbard to Jan Mayen Island, covering 280 000 square kilometers of Arctic seabed. Despite protests and warnings from environmental organizations, scientists and many ...



???????

????????(???: Svalbard og Jan Mayen,ISO 3166-1  
 ??????:SJ,ISO 3166-1 ??????:SJM,ISO 3166-1 ??????  
 ? :744)????????????????????,????????????????????????????????  
 ?????????????????????



## Jan Mayen , Svalbard und Spitzbergen

Jan Mayen. Die norwegische Insel Jan Mayen wird oft in einem Atemzug mit Spitzbergen und Svalbard genannt. In der Tat wurde die Insel bis Ende 1994 vom Sysselemanden in Longyearbyen verwaltet, aber seitdem geschieht das vom Festland aus. Die ...

## Contact Us

For catalog requests, pricing, or partnerships, please visit:  
<https://ssab-proiect.eu>