

## European Solar and Energy Storage Solutions

# Half square photovoltaic panel



## Overview

---

Half-cut solar cell technology increases the energy output of solar panels by reducing the size of the cells, so more can fit on the panel. The panel is then split in half so the top operates independently of the bottom, which means more energy is created - even if one half is shaded. That's the general overview -.

The advantages of half-cut cell panels are numerous. They improve the power output and performance of solar modules because they offer a.

Ever since REC Solar pioneered half-cut cell technology, many solar companies have followed suit. Some of the more well-known manufacturers are Panasonic, Trina Solar, Q CELLS, Jinko Solar, and LONGi Solar panels. If.

Half-cut cells are really great for improving the solar power energy yield of panels, but they are more challenging to manufacture. This makes it hard for traditional manufacturers to switch to.

Are half-cell solar panels better than full-cell panels?

Since half-cell modules produce more power and are more efficient and reliable than their full-cell counterparts, their use can lead to time and money savings for the installer. "By delivering more power per square meter, fewer panels are required to generate the same power," Seber said.

What is a half cut PV module?

LHS provides: Half-cut means that modules consist of 120 smaller instead of 60 larger cells. In a traditional silicon cell-based PV module, the ribbons interconnecting neighboring cells can cause a significant loss of power during the current transport.

Are half-cut panels better than polycrystalline panels?

Half-cut gains can achieve LCOE savings between 4-9% as compared to polycrystalline panels. Comparative analysis indicates that over 25 25-year lifespan, capex for half-cut modules at 4% higher costs can realize 6-8% superior LCOE due to their better yields. Thus, long-term returns indicate an

attractive proposition.

## Half square photovoltaic panel

---



### Tata Power Solar Rooftop Panel for Home Price in India

10.8 MW Rooftop Solar Power System - ANERT, Kerala. Savings for families & the Kerala Government; 10.8 MW distributed rooftop systems of 1-5 kW; Unique roofs - unique designs; Robust Systems customized for High Wind Speeds; ...

### Solar Panel Cost in 2024: How to Estimate The Cost of ...

The average solar panel cost has declined dramatically over the last decade, and solar systems now offer more value to homeowners than they ever have before the post-tax credit cost of solar panels for a 2,500-square-foot home is around ...



### Photovoltaic Basics (Part 1): Know Your PV Panels for Maximum ...

The Photovoltaic Panel. In a system for generating electricity from the sun, the key element is the photovoltaic panel, since it is the one that physically converts solar energy ...



### Strength in numbers: How half-cut solar cells conquer ...

Experts from INRPV (International Technology

Roadmap for Photovoltaic) expect the share of half-cell solar panels to increase even further: from around 20% in 2020 to more than 60% in 2030. The engineers build ...



## Most powerful solar panels 2024

In the solar world, panel efficiency has traditionally been the factor most manufacturers strived to lead. However, over the last 3 to 4 years, a new battle emerged to develop the world's most powerful solar panel, with ...

## Monocrystalline Solar Panels

The CS6R-395MS-HL solar panel features 108 half-cut solar cells on a black backsheet CS6R-395MS-HL \$195.00. Add to Cart Compare. Compare. 440 watt Sonali Solar Mono All-Black Solar Panel. Sonali This means you can ...



Sample Order  
UL/KC/CB/UN38.3/UL

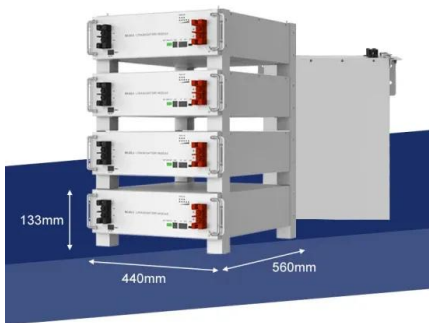


## Half-cut Solar Cells - A Revolution in Solar Technology

Photovoltaic (PV) glass is revolutionizing the solar panel industry by offering multifunctional properties that surpass conventional glass. This innovative material not only generates power but also provides crucial ...

## Solar Panel Sizes & Dimensions UK (2024)

The most common solar panel sizes for residential installations are between 250W and 400W, while larger commercial installations may use panels up to 500W or more. In terms of roof size, you will need a roof of ...



## Solar Panel Cost in 2024: How to Estimate The Cost of Solar , Solar...

The average solar panel cost has declined dramatically over the last decade, and solar systems now offer more value to homeowners than they ever have before the post-tax credit cost of ...



## 5 Point Guide on how Half Cut panels are Superior than ordinary solar

To reduce cell-to-module losses during assembly, solar cells are chopped in half. The square of the current time resistance is roughly equivalent to power loss. As a result, ...



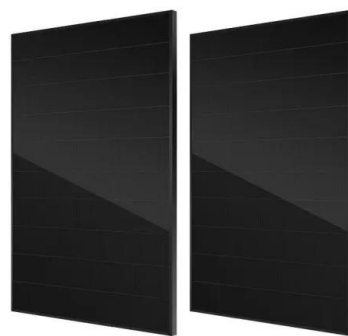
## Solar Panel Efficiency Calculator and Formula - Dot Watts®

Solar panel efficiency is the measurement of a solar panel's ability to convert the sunlight (irradiance) that falls on its surface area into electricity. For example, a 20% efficient ...



## Standard Solar Panel Sizes And Wattages (100W ...

In the 4th column there, you can see the calculated solar panel square footage as well. Here are a few examples of the dimensions of the most popular solar panel wattages: A typical 100-watt solar panel is 41.8 inches long and 20.9 inches ...



## How Much Solar Power Can My Roof Generate?

So with a north/south roof, that gives you 850 square feet. 400-watt solar panels that are 20 square feet in size: This is the most frequently quoted panel power output on EnergySage. 1.3 production ratio: This is the ...

## New module technologies: LHS, half-cut, MBB

The terms Light Harvesting Strings (LHS), half-cut (HC) cells and multi-busbar (MBB) are constantly appearing in the current discussion on photovoltaic modules. They promise higher yields and higher efficiencies. Our ...



## Contact Us

---

For catalog requests, pricing, or partnerships, please visit:  
<https://ssab-proiect.eu>