

# **Hollow photovoltaic panel size specification table**



## Overview

---

These specifications were created with certain assumptions about the house and the proposed solar energy system. They are designed for builders.

Builders should use EPA's online RERH SSAT to demonstrate that each proposed system site location meets a minimum solar resource potential.

EPA has developed the following RERH specification as an educational resource for interested builders. EPA does not conduct third-party.

The builder should install a 1" metal conduit from the designated inverter location to the main service panel where the system is intended to be tied into the home's electrical service. The conduit should be capped and.

What factors limit the size of a solar photovoltaic system?

There are other factors that will limit the size of your solar photovoltaic system some of the most common are roof space, budget, local financial incentives and local regulations. When you look at your roof space it is important to take into consideration obstructions such as chimneys, plumbing vents, skylights and surrounding trees.

How much power does a photovoltaic solar cell use?

Then the power output of a typical photovoltaic solar cell can be calculated as:  
 $P = V \times I = 0.46 \times 3 = 1.38$  watts. Now this may be okay to power a calculator, small solar charger or garden light, but this 1.38 watts is not enough power to do any usable work.

What is the minimum array area requirement for a solar PV inverter?

Although the RERH specification does not set a minimum array area requirement, builders should minimally specify an area of 50 square feet in order to operate the smallest grid-tied solar PV inverters on the market.

How do you calculate the number of photovoltaic modules?

Multiplying the number of modules required per string (C10) by the number of

strings in parallel (C11) determines the number of modules to be purchased. The rated module output in watts as stated by the manufacturer. Photovoltaic modules are usually priced in terms of the rated module output (\$/watt).

What is the basic unit of a photovoltaic system?

The basic unit of a photovoltaic system is the photovoltaic cell. Photovoltaic (PV) cells are made of at least two layers of semiconducting material, usually silicon, doped with special additives. One layer has a positive charge, the other negative. Light falling on the cell creates an electric field across the layers, causing electricity to flow.

How is a PV array sized for a stand-alone system?

The PV array for stand-alone systems is sized to meet the average daily load during the critical design month. System losses, soiling and higher operating temperatures are factored in estimating array output. The system voltage determines the number of series-connected modules required per source circuit.

## Hollow photovoltaic panel size specification table



### Optimization of Photovoltaic Performance Using a ...

- 120° and a 6.35 mm thread connection with a size of 23 Table 2. Photovoltaic panel specification . Specification . Information . panels with a hollow cone nozzle and a flat fan nozzle

### Structural Requirements for Solar Panels -- Exactus ...

ASCE 7 Guidelines. The American Society of Civil Engineers (ASCE) provides guidelines for the structural design of solar panel installations through their publication, ASCE 7 1. These guidelines cover the essential ...



Test certification  
CE FC



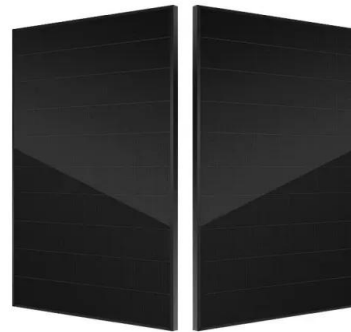
### Steel solutions for solar installations Your partner around the ...

Kalypto® is a support system for PV modules which are fixed on pre-painted steel sandwich panels using the innovative and patented Ondafix® fixing rail. High performance sandwich ...

### Solar Panel Wire Size (Cable Gauge + Calculations ...

Table 1: Solar panel cable for amp chart for 90°C

(194°F) Copper. Amperage tables exist for copper cables reflecting the current carrying capacity of the different gauge cables at different operating temperatures. ...



## Simulation of structure and power generation for Self-Compacting

The results show that the optimal size of the hollow slab is 1000 × 1000 × 250 mm; the tilt, azimuth, pitch and edge distance of the solar cells in the best layout mode of the ...



## Solar Cable Size Selection Guide For PV Plants

1. Solar Panel PV Wire. It is a well-known solar power wire that is used for connecting cabling in photovoltaic installations. The XLPE cable insulation provides remarkable resistance to ozone, ultraviolet radiation, and ...

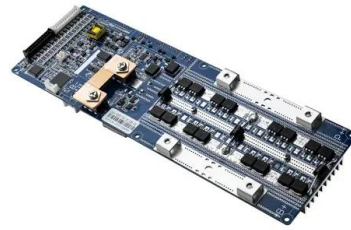


## Ultimate Guide to Solar Panel Size and Weight

Everything you need to know about solar panel size and weight, including sample calculations that will help you maximize solar power at the lowest cost. Solar panel specification (data) sheets are full of a dizzying ...

## Solar Panel Dimensions and Sizes: Complete Guide

Standard Solar Panel Size. How big is a solar panel? There are three main sizes of solar panels to know: 60-cell, 72-cell, and 96-cell. For commercial and residential solar panels, the 60-cell ...



## Solar Panel Wiring Basics: Complete Guide & Tips to Wire a PV ...

You should know that there are limitations for series solar panel wiring. In the U.S., solar strings are required to feature a maximum voltage of 600V, so solar arrays comply ...

## Contact Us

---

For catalog requests, pricing, or partnerships, please visit:  
<https://ssab-proiect.eu>