

## European Solar and Energy Storage Solutions

# How many square meters does a photovoltaic panel occupy



## Overview

---

Photovoltaic panels vary in size, but on average, they measure about 2.3 square meters<sup>1</sup>. However, residential panels are typically smaller, covering an area of about 17.5 square feet<sup>2</sup>.

These panels are approximately 30% larger than their residential counterparts and typically measure around 2.1m in height by 1.1m in width, covering an area of about 2.3 square meters.

On average, solar panels measure about 17.5 square feet. How many solar panels kWh do I Need?

You need 24 to 25 solar panels kWh to get a solar panel output of 1000 kWh. The solar panel calculator helps to figure out how many solar panels you need and determine the right system size and roof area requirements for your system.

How big is a solar panel?

That is about 5.4 feet long and 3.25 feet wide, which equates to around 15 square feet. This is typically regarded as the standard solar panel size How thick is a solar panel?

That also varies depending on manufacturer; solar panel thickness typically ranges between 1.25 inches (32 millimeters) and 1.6 inches (40 millimeters).

How to calculate solar panel output?

To find the solar panel output, use the following solar power formula: output = solar panel kilowatts × environmental factor × solar hours per day. The output will be given in kWh, and, in practice, it will depend on how sunny it is since the number of solar hours per day is just an average. How to calculate the solar panels needs for camping?

.

Does solar panel size matter?

Solar panel size does matter: The more solar cells a panel has, the more energy it can absorb from the sun. However, solar panels can vary in terms of efficiency, so the key factor when choosing solar panels should be their power rating. Most residential panels range between 250 and 400 watts per hour.

How big is a commercial solar panel?

The average size of a commercial solar panel, such as those you would see on top of a hospital or in a field, is about 6.5 feet (2 meters) by 3.35 feet (1 meter), or 78 inches by 39 inches. They contain a system of at least 72 solar cells and can weigh around 50 pounds. How Many Cells Does a Solar Panel Have?

.

How much energy does a solar panel generate?

Before installing solar panels, it is also crucial to calculate their output to ensure optimal performance. Usually, solar panels generate energy ranging from 250 watts to 400 watts per hour. But their actual output is influenced by a variety of variables, such as their efficiency, orientation, and location.

## How many square meters does a photovoltaic panel occupy



### How many square meters of solar panels does a family need?

Solar panel power: approximately 175 Wp/m<sup>2</sup>.  
 Calculation: 4000/175 = 22.8. Minimum required area: approximately 23 m<sup>2</sup>. In this scenario, a roof area of 6x4 meters would already be ...

### Solar Rooftop Calculator: How Many Solar Panels Can Fit On ...

...

Now, by average solar panel wattage per square foot, we can put a 10.35kW solar system on an 800 sq ft roof. This is how many solar panels you can put on this roof: If you only use 100-watt ...



### How Much Land Does Solar, Wind and Nuclear Energy Require?

According to the MIT authors, powering 100 percent of estimated U.S. electricity demand in 2050 with solar energy would require roughly 33,000 square kilometers (sq-km) of land. That's if we ...



### Solar Rooftop Calculator: How Many Solar Panels Can ...

Now, by average solar panel wattage per square

foot, we can put a 10.35kW solar system on an 800 sq ft roof. This is how many solar panels you can put on this roof: If you only use 100-watt solar panels, you can put 103 100-watt solar ...



## How Much Roof Space Is Needed For Home Solar ...

If you want to get a sense of how many panels a roof can support, you don't need a fancy solar panel square footage calculator. Here's an easy calculation you can do: Multiply the square footage of your roof by .75 to ...

## How Much Power Does a Solar Panel Produce? (2024 ...

How Much Power Does a Solar Panel Produce? Solar panels are rated by the amount of power they can produce in ideal conditions, typically around 1,000 watts per square meter. However, in real-world



## How Much Energy Do Solar Panels Produce Per ...

However, on average, a solar panel will produce around 100 watts of electricity per square meter (10 square feet). So, for example, a typical residential solar panel measuring 1.6 meters by 0.8 meters (around 5 feet by ...

## Solar Panel Output: How Much Power Does a Solar ...

On average, solar panels designed for domestic use produce 250-400 watts, enough to power a household appliance like a refrigerator for an hour. To work out how much electricity a solar panel can



## Solar Panel Output Voltage: How Many Volts Do PV Panel ...

If you know the number of PV cells in a solar panel, you can, by using 0.58V per PV cell voltage, calculate the total solar panel output voltage for a 36-cell panel, for example. You only need to ...

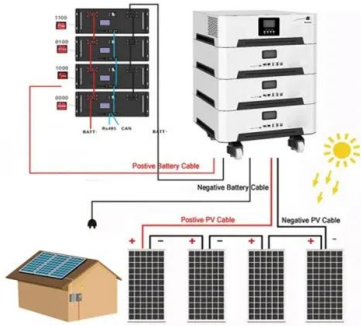
## Solar Power Per Square Meter Calculator

How many square meters of solar panels do you need? Try our solar panel cost calculator if you want to work out what size of solar system you need to save money whilst being grid-tied. We've also written in more detail ...



## How much energy does a solar panel produce?

How much energy does a solar panel produce? As mentioned above, the two main factors that determine solar panel energy output are panel power and sunshine. In the UK, a typical solar panel has a power rating of 350W (watts), ...



## How Big Is a Standard Solar Panel?

A typical residential solar panel, measuring approximately 65 inches (165.1 cm) in height and 39 inches (99.1 cm) in width, covers an area of about 17.5 square feet (~1.64 square meters). For a standard household ...



## The Land Footprint of PV Solar (and Nuclear and Wind ...)

Photovoltaic (PV) solar farms have relatively low capacity factors because unsurprisingly, the PV panels do not generate electricity at night or on cloudy days. The capacity factor of solar PV



## Contact Us

For catalog requests, pricing, or partnerships, please visit:  
<https://ssab-proiect.eu>