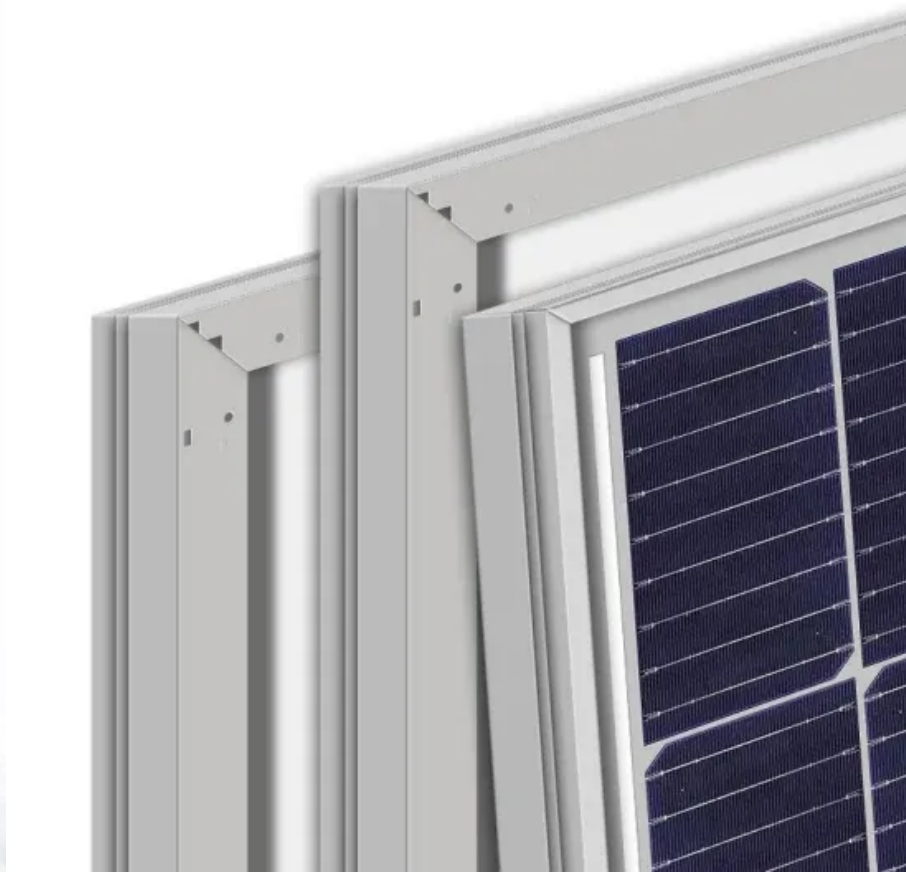


European Solar and Energy Storage Solutions

How many watts of photovoltaic panels can be made per square meter



Overview

The average power output of photovoltaic panels is around 1,000 watts per square meter¹. However, the actual output can vary based on factors such as panel type and conditions. Monocrystalline panels, for example, can produce between 150 to 220 watts per square meter². To calculate the output per square meter, multiply the power output of a single panel by the number of panels and divide the total watts generated by the total panel surface area³⁴.

Solar panels are rated by the amount of power they can produce in ideal conditions, typically around 1,000 watts per square meter.

On average, monocrystalline panels can produce between 150 to 220 watts per square meter, making them a popular choice for residential and commercial solar installations.

Calculating watts per square meter (W/m) is simple: Multiply the power output of a single panel by the number of panels. Divide the total watts generated by the total panel surface area.

They are rated to generate approximately 265 watts (W) of power (in ideal conditions). To calculate the output per square meter, you can use the following formula: How much power does a solar panel produce?

Standardized residential solar panels on the market are quoted to generate averagely between 250 and 400 watts an hour. Typical domestic solar panel systems are rated to produce power ranging from 1 KW to 4 KW. The actual output of a solar panel depends on many factors, such as its size, capacity, location, orientations, and weather conditions.

How many Watts Does a solar panel power a house?

Average household solar panels on today's market offer power output ratings expanding from 250 to 400 watts, you can choose from freely according to your power requirement and anticipated budget. How many solar panels are needed to power an average house?

.

How to calculate solar panel output?

To find the solar panel output, use the following solar power formula: output = solar panel kilowatts × environmental factor × solar hours per day. The output will be given in kWh, and, in practice, it will depend on how sunny it is since the number of solar hours per day is just an average. How to calculate the solar panels needs for camping?

.

How do you calculate wattage of a solar panel?

Wattage is the output of solar panels that is calculated by multiplying the volts by amps. Here, the amount of the force of the electricity is represented by volts. The aggregate amount of energy used is expressed in amps (amperes). Output ratings on most solar panels range between 250 watts to 400 watts. 1. Number of Solar Cells.

What does wattage mean on a solar panel?

Generally, they are referring to the wattage, power output, and capacity of a solar panel. Standardized residential solar panels on the market are quoted to generate averagely between 250 and 400 watts an hour. Typical domestic solar panel systems are rated to produce power ranging from 1 KW to 4 KW.

How many solar panels do I Need?

To fully power an average home using 11,000 kWh per year, a typical solar power system will need between 21-24 panels of 320 watts each. The exact number and wattage of panels, as well as the output they can produce, will depend on where you live and the setup of your specific system.

How many watts of photovoltaic panels can be made per square me

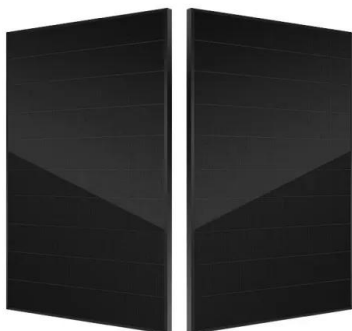


A Complete Guide on Solar Panel Calculations (2023 ...

If you reside in an area that receives 5 hours of maximum sunlight and your solar panel has a rating of 200 watts, the output of your solar panel can be calculated as follows: Daily watt hours = $5 \times 200 \times 0.75 = \dots$

Solar Panel Output and Wattage Explained (2024 ...

Solar panel wattage and efficiency ratings are based on their performance under standard test conditions (STC). This includes a cell temperature of 25° Celsius, solar irradiance of 1,000 watts per square meter, ...



Solar Rooftop Calculator: How Many Solar Panels Can

Now, by average solar panel wattage per square foot, we can put a 10.35kW solar system on an 800 sq ft roof. This is how many solar panels you can put on this roof: If you only use 100-watt ...

How much energy does a solar panel produce?

On average, solar panels will produce about 2

kilowatt-hours (kWh) of electricity daily. That's worth an average of \$0.36. Most homes install around 15 solar panels, producing an average of 30 kWh of solar energy daily. That's enough ...



Solar Power per Square Meter Calculator

A solar power per square meter calculator takes details regarding these factors and then gives the accurate output generated by the solar panel per square meter. After this, it's time to learn about solar panel output ...

Solar Panel Size and Wattage Chart: Standard Sizes & Uses for Each

136-200 watts per square meter: Larger solar panel kits can be purchased and set up to run all of the onboard appliances, allowing bigger flat-screen televisions, fridges, ...



Solar panel output: How much electricity do they ...

A solar panel's output is expressed in watts (W). The higher the wattage of a solar panel, the more electricity it can produce. the more electricity it will produce per square metre. Here's what you can expect from different ...

How Many kWh Does A Solar Panel Produce Per Day? Calculator ...

Now you can just read the solar panel daily kWh production off this chart. Here are some examples of individual solar panels: A 300-watt solar panel will produce anywhere from 0.90 to ...



Solar Panel Watts Per Square Meter Explained

Solar panel watts per square meter (W/m) measures the power output of a solar panel based on its size. Compare solar panels to see which generates most electricity per square meter. A higher W/m value means a solar panel ...

How to Calculate Solar Panel kWh

1. Determine the Size of One Solar Panel.
Multiply the size of one solar panel in square meters by 1,000 to convert it to square centimeters. Example: If a solar panel is 1.6 square meters, the calculation would be 1.6 ...



Solar Panel Sizes And Wattage , Sizing, Dimensions

Watt (W) and kilowatt (kW): a unit used to quantify the rate of energy transfer. One kilowatt = 1000 watts. Solar panels' rating in watts specifies the maximum power the solar panel can deliver at any time, providing insights ...



Solar Panel Output: How Much Power Does a Solar ...

On average, solar panels designed for domestic use produce 250-400 watts, enough to power a household appliance like a refrigerator for an hour. To work out how much electricity a solar panel can



Solar Power Per Square Meter Calculator

Solar panels are typically marketed with a "watt peak" number. This is the amount they should produce in ideal conditions. Our calculator is based on one of the most efficient solar panels on the market, a 540wp model ...

Contact Us

For catalog requests, pricing, or partnerships, please visit:
<https://ssab-proiect.eu>