

## European Solar and Energy Storage Solutions

# How much electricity does a wind turbine generate in a year



LIQUID/AIR COOLING

ON GRID/HYBRID

PROTECTION IP54/IP55

BATTERY /6000 CYCLES



## Overview

---

Every year, wind turbines produce about 434 billion kilowatts (kWh) of electricity a year. Just 26 kWh of energy can power an entire home for a day.

Every year, wind turbines produce about 434 billion kilowatts (kWh) of electricity a year. Just 26 kWh of energy can power an entire home for a day.

Most onshore wind turbines have a capacity of 2-3 megawatts (MW), which can produce 6 million kilowatt hours (kWh) of electricity every year.

The biggest wind turbines generate enough electricity in a year (about 12 megawatt-hours) to supply about 600 U.S. homes.

To break it down, Duke Energy estimates that a wind turbine that has generated one megawatt can power 300 homes every year, where most land turbines generate between one and five megawatts.

Over the course of a year, modern turbines can generate usable amounts of electricity over 90% of the time. How much energy does a wind turbine produce a year?

On average, there are about 50 wind turbines per farm, and typically, one of these turbines can produce 6 million kWh per year. That would mean that one wind farm could produce 300,000 MW a year. That is enough electricity to power millions of homes. How Does the Size of a Wind Turbine Affect Its Energy Production?

How many kWh can a wind turbine power a day?

Just 26 kWh of energy can power an entire home for a day. Wind is the third largest source of electricity in the United States with 40 of the 50 states having at least one wind farm. That explains why wind turbine service technician is one of the fastest-growing jobs in the United States.

How many mw can a wind farm produce a year?

A wind farm, also known as a wind power station, is an area where a lot of large wind turbines are grouped together. On average, there are about 50 wind turbines per farm, and typically, one of these turbines can produce 6 million kWh per year. That would mean that one wind farm could produce 300,000 MW a year.

How much energy does a 500 watt wind turbine produce?

A 500 W wind turbine has 12 kWh rated output (the total energy capacity). Since wind turbines are highly dependent on other factors such as wind strength, weather conditions, and many more, they can only produce up to 80% of their original rated output. Hence, we look at their actual output as the real energy generated.

How many turbines does a wind farm have?

The average wind farm has about 50 turbines. The nation's largest wind farm has 586 turbines and is in central California. Wind farms generate an average of 506,000 MWh a year, according to data from the US Geological Survey (USGS). Which states generate the most electricity from wind power?

.

How do wind turbines produce energy?

Wind turbines are capable of spinning their blades on hillsides, in the ocean, next to factories and above homes. How much energy they produce depends on wind speed, efficiency and other factors.

## How much electricity does a wind turbine generate in a year



### Wind turbine

Thorntonbank Wind Farm, using 5 MW turbines REpower 5M in the North Sea off the coast of Belgium. A wind turbine is a device that converts the kinetic energy of wind into electrical energy. As of 2020, hundreds of thousands of large ...

### Wind Power Facts and Statistics , ACP

Over the course of a year, modern turbines can generate usable amounts of electricity over 90% of the time. For example, if the wind at a turbine reaches the cut-in speed of six to nine mph, the turbine will start generating electricity. As ...

Support Customized Product



Standard 20ft containers



Standard 40ft containers

### How Much Energy Can A Single Wind Turbine Produce Per Year?

As the world's population grows and the demand for energy increases, finding cleaner and more sustainable energy sources has become a top priority. Wind power is one such source that ...

### Wind power , Description, Renewable Energy, Uses, ...

4 ???· Wind farms are areas where a number of

wind turbines are grouped together, providing a larger total energy source. As of 2018 the largest wind farm in the world was the Jiuquan Wind Power Base, an array of more than 7,000 ...



## How Much Energy Does a Wind Turbine Produce

The correlation between rotor size and energy generation holds across wind turbines. Again, the next time you wonder how much electricity a wind turbine can generate, remember the pivotal role that rotor diameter. It is ...

## How Much Energy Does A Wind Turbine Produce?

How much energy does a wind turbine produce? A modern wind turbine begins to produce electricity when wind speed reaches 6-9 miles per hour (mph) and has to shut down if it exceeds 55 mph (88.5 kilometers per hour) when its ...



## How much energy does a wind turbine generate?

How much energy does a wind turbine produce in one turn? Most onshore wind turbines have a capacity of 2-3 megawatts (MW), which can produce 6 million kilowatt hours (kWh) of electricity every year. Enough to ...



## How Much Energy Does a Wind Turbine Produce?

The more rotations you get on the turbines, the more electricity you'll generate as the nacelle of the wind turbine converts kinetic energy to electrical energy. The blades of a wind turbine typically revolve between 10 ...



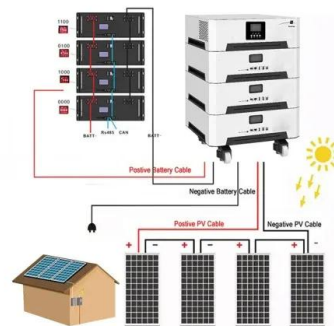
## How much US electricity comes from wind power?

Wind farms generate an average of 506,000 MWh a year, according to data from the US Geological Survey (USGS). Which states generate the most electricity from wind power? As of April 2022, there are more than ...



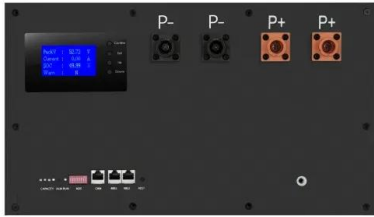
## How Much Energy Does a Wind Turbine Produce?

U.S. wind turbines produce about 434 billion kilowatts (kWh) of electricity a year, and it only takes an average of 26 kWh of energy to power an entire home for a day. So, based on the statistics above, utility-scale wind turbines generate ...



## How Much Energy Does a Wind Turbine Produce? , UTI

Every year, wind turbines produce about 434 billion kilowatts (kWh) of electricity a year. Just 26 kWh of energy can power an entire home for a day. Wind is the third largest source of electricity in the United States with 40 ...



## Wind power , Your questions answered , National Grid ...

Does the amount of energy that wind turbines produce make up for the amount that's needed to manufacture them? The average windfarm produces 20-25 times more energy during its operational life than was used to ...



## Contact Us

---

For catalog requests, pricing, or partnerships, please visit:  
<https://ssab-proiect.eu>