

## European Solar and Energy Storage Solutions

# How to calculate the energy storage configuration for photovoltaic projects

## 12.8V 200Ah



## Overview

---

The optimal configuration of energy storage capacity is an important issue for large scale solar systems. a strategy for optimal allocation of energy storage is proposed in this paper. First various scenarios and their value of energy storage in PV applications are discussed.

The optimal configuration of energy storage capacity is an important issue for large scale solar systems. a strategy for optimal allocation of energy storage is proposed in this paper. First various scenarios and their value of energy storage in PV applications are discussed.

The outer model optimizes the photovoltaic & energy storage capacity, and the inner model optimizes the operation strategy of the energy storage. And calculate the actual life of the energy storage through the rain flow counting method. Use the fmincon function in the optimization toolbox to solve the problem on the matlab platform.

This paper proposed a capacity allocation method for the photovoltaic and energy storage hybrid system. It analyzed how to rationally configure the capacity of the photovoltaic system and how to couple its capacity with the capacity configuration of the energy storage system.

A comprehensive energy storage system size determination strategy is obtained with the trade-off among the solar curtailment rate, the forecasting accuracy, and financial factors, which provides a practical reference to determine energy storage size for PV power station and further verifies the feasibility of energy storage system in the high .

The results show that the configuration of energy storage for household PV can significantly reduce PV grid-connected power, improve the local consumption of PV power, promote the safe and stable operation of the power grid, reduce carbon emissions, and achieve appreciable economic benefits. What determines the optimal configuration capacity of photovoltaic and energy storage?

The optimal configuration capacity of photovoltaic and energy storage

depends on several factors such as time-of-use electricity price, consumer demand for electricity, cost of photovoltaic and energy storage, and the local annual solar radiation.

How to design a PV energy storage system?

Establish a capacity optimization configuration model of the PV energy storage system. Design the control strategy of the energy storage system, including timing judgment and operation mode selection. The characteristics and economics of various PV panels and energy storage batteries are compared.

What is the energy storage capacity of a photovoltaic system?

The photovoltaic installed capacity set in the figure is 2395kW. When the energy storage capacity is 1174kW h, the user's annual expenditure is the smallest and the economic benefit is the best. Fig. 4. The impact of energy storage capacity on annual expenditures.

How to determine the operation timing of PV energy storage system?

In order to make the operation timing of ESS accurate, there are three types of the relationship between the capacity and load of the PV energy storage system: Power of a photovoltaic system is higher than load power. But this time, the capacity of ESS is less than or equal to the total demand capacity of the load at peak time;.

What is the impact of capacity configuration of energy storage system?

The capacity configuration of energy storage system has an important impact on the economy and security of PV system . Excessive capacity of energy storage system will lead to high investment, operation and maintenance costs, while too small capacity will not fully mitigate the impact of PV system on distribution network.

Are photovoltaic penetration and energy storage configuration nonlinear?

According to the capacity configuration model in Section 2.2, Photovoltaic penetration and the energy storage configuration are nonlinear. Considering the charging power and other effects, if you use mathematical methods such as enumeration, the calculation is complicated and the efficiency is extremely low.

## How to calculate the energy storage configuration for photovoltaic

---

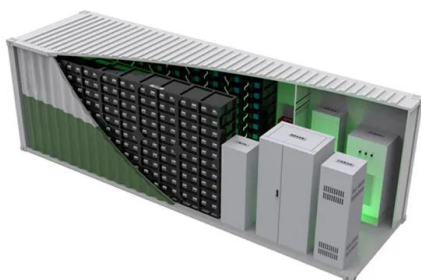


### Optimal Capacity Configuration of Energy Storage in ...

In this paper, a methodology for allotting capacity is introduced, which takes into account the active involvement of multiple stakeholders in the energy storage system. The objective model for maximizing the financial ...

### Energy Storage Sizing Optimization for Large-Scale PV Power Plant

The optimal configuration of energy storage capacity is an important issue for large scale solar systems. a strategy for optimal allocation of energy storage is proposed in this paper. First ...

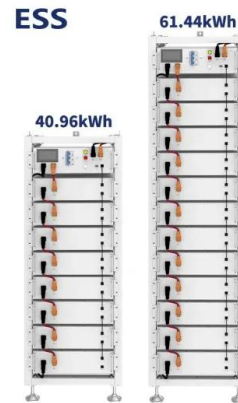


### Optimal Configuration of Energy Storage Systems in ...

Proposed a method for optimal allocation of energy storage capacity of a distribution network based on a two-layer programming model and verified its feasibility. Used the K-means method to complete an analysis of ...

### Capacity Configuration of Energy Storage for Photovoltaic Power

Capacity configuration is the key to the economy in a photovoltaic energy storage system. However, traditional energy storage configuration method sets the cycle number of the battery ...



## Battery Energy Storage Systems (BESS) engineering for PV

Hybridize your PV plant and get the engineering of the battery energy storage system (BESS). Get its layout and technical documentation in a trice. The future of utility-scale PV projects is ...

## Solar Photovoltaic System Design Basics

Batteries allow for the storage of solar photovoltaic energy, so we can use it to power our homes at night or when weather elements keep sunlight from reaching PV panels. Not only can they be used in homes, but batteries are playing an ...



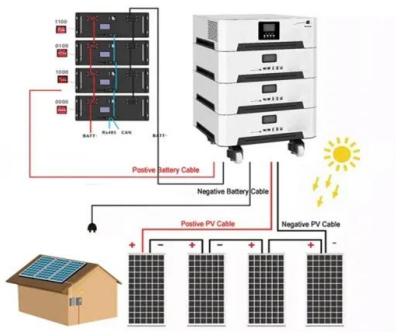
## Energy storage system design for large-scale solar PV ...

Large-scale solar is a non-reversible trend in the energy mix of Malaysia. Due to the mismatch between the peak of solar energy generation and the peak demand, energy storage projects are essential and crucial to ...



## Research on the energy storage configuration strategy of new energy ...

According to the fitting results, the typical daily output deviation of the wind farm conforms to the normal distribution, and the energy storage installation quantity calculated by ...



## Method for planning a wind-solar-battery hybrid power plant with

In this paper, an attempt is being made to answer the intrinsic problems of RE sources through a hybrid wind-solar power system design. The hybrid wind-solar structure ...

## How to Calculate the Installed Capacity of Your Home

Total Required Energy per month: 550 kWh Units  
-----Step 2: Calculate the required system capacity. Sunlight availability varies by location and time ...



## Optimal configuration of photovoltaic energy storage capacity for ...

The outer model optimizes the photovoltaic & energy storage capacity, and the inner model optimizes the operation strategy of the energy storage. And calculate the actual ...



## A Study on the Optimal Capacity Configuration of Hybrid Energy Storage

Energy storage has the role of regulation the main power source and electrical load transferring in energy systems. Therefore, on the basis of the application of multiple ...



## Solar design software for utility-scale plants -- ...

Get bankable energy yield estimates while designing your PV system. Streamlined interconnection engineering Size the facility according to global interconnection standards. Download comprehensive SLD and Gen-Tie ...

## How to Calculate Output Energy of PV Solar Systems?

It will provide on-site investigation, design drawings, solar energy storage system solutions, transportation of goods, assist you to import solar energy storage system, installation services, ...





## How to Size a Solar System [Step-by-Step Guide]

If partial offset is your goal, you can account for that here. For example, let's say you want to start by offsetting half your energy usage with solar:  $7.2 \text{ kW solar array} * 0.5 = 3.6 \text{ kW solar array. ...}$

## Contact Us

---

For catalog requests, pricing, or partnerships, please visit:  
<https://ssab-proiect.eu>