

## European Solar and Energy Storage Solutions

# How to check the grade of Yingli photovoltaic panels



## Overview

---

Product certification. Yingli Solar's products have obtained a number of high-quality PV module certifications granted by the world's leading service providers, passed international product certifications by Europe, the European Union, the United States and other countries, and have been awarded product certifications from China Quality .

Product certification. Yingli Solar's products have obtained a number of high-quality PV module certifications granted by the world's leading service providers, passed international product certifications by Europe, the European Union, the United States and other countries, and have been awarded product certifications from China Quality .

Yingli Solar panels have efficiency ratings between 19.08% and 20.70% which are high-efficiency ratings. Positive power tolerance. When determining a solar panel's power rating, solar panels are tested under standard test conditions, or conditions that remain constant to fairly compare and test solar panels. The positive power tolerance is how .

Yingli Solar's modules have passed DNV GL reliability test for four consecutive years and been rated as the "Top Performer" among the product of this kind. In 2019, the "PANDA" double-layered glass module won the world's first highest grade A++ certificate of outdoor power generation energy efficiency rating issued by TÜV Rheinland.

Yingli Solar Panel Review: Cost, Specs & Performance (2024) Here's what you need to know about Yingli Solar: EcoWatch Rating: 4.0 Stars. Efficiency: 22.3 to 23.5%. Power Rating: 320 to 670 W. Warranty Length: 12 to 30 Years.

In order to maintain the fire class rating, the distance between the PV module front surface (glass) and the roof surface shall be at least 10 cm. This spacing also allows air flow to cool the PV module. Install PV modules with a minimum spacing of 1 cm between neighboring frames to allow for thermal expansion. How efficient are Yingli solar panels?

Yingli Solar panels have efficiency ratings between 19.08% and 20.70% which

are high-efficiency ratings. When determining a solar panel's power rating, solar panels are tested under standard test conditions, or conditions that remain constant to fairly compare and test solar panels.

How temperature-tolerant are Yingli solar panels?

Yingli solar panels have temperature coefficients of  $-0.34$  to  $-0.37$   $\%/^{\circ}\text{C}$ . While this is decent, most modern solar modules have temperature coefficients between  $0.3$  and  $0.7$   $\%/^{\circ}\text{C}$ . However, as a vertically integrated company, Yingli manufactures everything from ingots and wafers to cells and modules, allowing it to have better control over product quality.

What are Yingli Solar PV modules rated for?

Yingli Solar PV modules are designed to meet the requirements for the standards IEC 61215 and IEC 61730, application class A. Modules rated for use in this application class may be used in systems operating at greater than 50 V DC or 240 W, where general contact access is anticipated.

Do Yingli Solar PV modules corrode?

Although some types of Yingli Solar PV modules have passed the IEC 61701 salt-mist corrosion test with a salt concentration of 5% by weight, galvanic corrosion can occur between the aluminum frame of the PV module and installation or grounding hardware if such hardware is comprised of dissimilar metals.

What angle should Yingli solar panels be mounted?

Yingli Solar recommends that PV modules be mounted at a minimum tilt angle of 10 degrees to allow for proper self-cleaning from normal rain showers. Partial or complete shading of a PV module or modules can significantly reduce system performance.

Where should Yingli Solar PV modules be mounted?

Yingli Solar PV modules must be mounted on appropriate installation structures positioned on suitable buildings, the ground, or other structures suitable for PV modules (e.g. carports, building facades or PV trackers). PV modules must not be mounted on moving vehicles of any kind.

## How to check the grade of Yingli photovoltaic panels

---

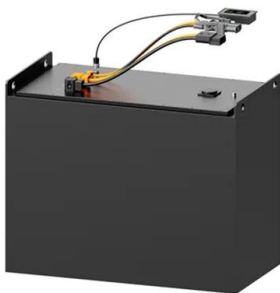


### A Comprehensive Guide to Bifacial Solar Panels

How Does A Bifacial Solar Panel Work? The top solar cells of a bifacial solar panel face the sun so they can absorb the available sun rays directly. This makes it no different than a conventional solar panel in this ...

### Yingli Solar

It is an integrated photovoltaic smart energy solution provider that encompasses technology research and development, smart manufacturing, and power station business. In 2023, its photovoltaic module bid volume and shipment volume ...



### Monocrystalline Solar Panels vs Polycrystalline Solar ...

Because monocrystalline solar cells are made from purer-grade silicon, they lay claim to the most efficient solar panels on the planet, at 24.1% efficiency!. However, when we turn away from premium, ultra-efficient panels ...

### Jinko Solar panels: An in-depth review

The Jacksonville, Florida, location has been

producing solar panels since 2018. Jinko solar panel cost. A solar energy system built with Jinko solar panels typically costs around \$2.60 per watt. That means a 6 kilowatt (kW) Jinko ...



## How to Choose Grade A Solar Panels for Your Solar ...

Solar panel grades serve as a critical indicator of quality, helping consumers make informed decisions when selecting the right panels for their solar energy systems. Cell Integrity: Carefully examine the solar cells, ...

## Testing PV Modules

The best, quickest, and easiest way to test a solar module is to check both the open circuit voltage (Voc) and short circuit current (Isc). Depending on the reason for testing; the test can be done: at the controller; at the combiner box (if ...

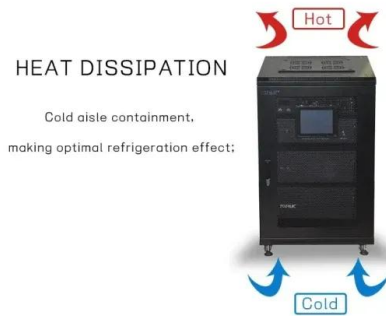
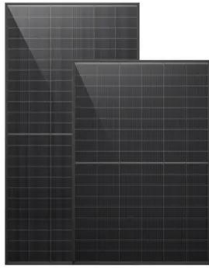


## Top solar panel brands in performance, reliability, and ...

Reliability. Damp heat test. Top performers: Astronergy, JA Solar, Longi Solar, Qcells, Runergy, Trina Solar, Yingli Solar. The RETC thresher test includes a damp heat test that exposes modules

## Solar Panels Grades A, B, and C (Explained)

What Is a Grade B Solar Panel? Grade B solar panels have some visual defects that do not affect performance. Grade B naturally falls below grade A in this grading system. So how does Grade B stack up against the ...



## Yingli solar panels: the complete review

Yingli Solar's modules have passed DNV GL reliability test for four consecutive years and been rated as the "Top Performer" among the product of this kind. In 2019, the "PANDA" double ...

## Contact Us

---

For catalog requests, pricing, or partnerships, please visit:  
<https://ssab-proiect.eu>