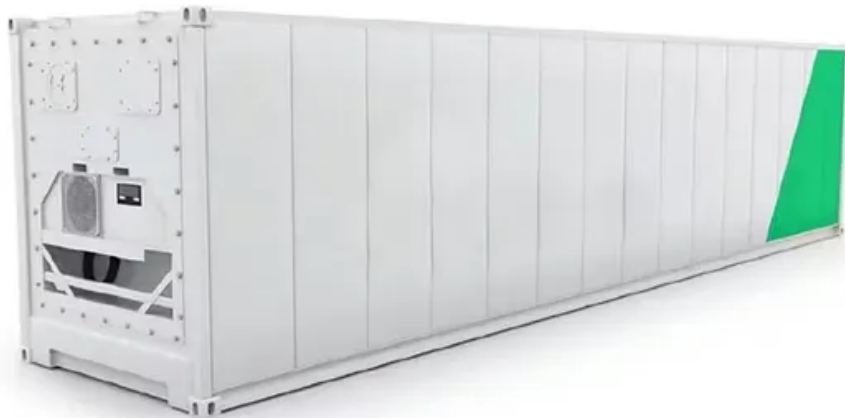


European Solar and Energy Storage Solutions

How to connect two series and two parallel photovoltaic panels



Overview

If you're using more than one solar panel, connecting each PV module together and to a portable power station or other balance of system is essential. Solar panels on their own are useless. It's when you connect a PV module to a solar inverter or charge controller to convert or store electricity that the magic happens.

In most modern solar panel arrays, the physical act of wiring multiple solar panels together is as simple as plugging in a cable. But, before you do.

If you've already purchased your solar panel array and balance of system and you'd like to install them yourself, here are seven basic steps that.

Connecting solar panels in series or parallel has its pros and cons. Can you have the best of both worlds?

Yes, many large solar panel.

Steps: Identify Terminals: Find the positive and negative terminals on each solar panel. Connect Panels: Connect the positive terminal of the first panel to the negative terminal of the second panel. Continue connecting in this manner for additional panels. End Connections: .

Steps: Identify Terminals: Find the positive and negative terminals on each solar panel. Connect Panels: Connect the positive terminal of the first panel to the negative terminal of the second panel. Continue connecting in this manner for additional panels. End Connections: .

Decide whether to connect your solar panels in series, parallel, or series-parallel. Parallel is often best for small systems of 2 or 3 PV panels. However, you must evaluate the optimal option for 4 x 400W rigid solar panels based on your location and other relevant conditions.

We're going to show you step-by-step how to connect your solar panels either in a series or parallel circuit, which circuit wiring is better, and how to correctly plug these solar kits into.

Connecting two portable solar panels, or any other type of solar panel, (same

wattage) in parallel will multiply the total power output current by 2 and keep the system voltage at the same level. Parallel solar panel connections should be made using 'Y' connectors available at REDARC.

In this tutorial, I'll show you how to wire solar panels in series and how to wire them in parallel. Once we've got that covered, I'll also explain the difference between these two configurations in Voltage (Volts) and Current (Amps) and provide a real-life example. How do I connect two portable solar panels in parallel?

Connecting two portable solar panels, or any other type of solar panel, (same wattage) in parallel will multiply the total power output current by 2 and keep the system voltage at the same level. Parallel solar panel connections should be made using 'Y' connectors available at REDARC.

How do I connect multiple 4WD solar panels?

When it comes to solar panel connection, there are a few ways you can connect multiple 4WD solar panels. You can use a parallel or series connection, or a combination of the two. The diagram below illustrates how to wire solar panels in series or parallel. Series Wiring multiple solar panels in series means you are wiring each panel to the next.

What is the difference between series and parallel solar panels?

Wiring solar panels in series sums the voltages, but the current remains the same. Wiring solar panels in parallel sums the currents, but the voltage remains the same. Note: You can calculate the power output of your series and parallel wiring configurations with our solar panel series and parallel calculator.

What does it mean to wire multiple solar panels in series?

Wiring multiple solar panels in series means you are wiring each panel to the next. This solar panel connection creates a string circuit. The wire that runs from the solar panel's negative terminal is connected to the next panel's positive terminal, and so on. Connecting in series is one of the easiest ways to connect your solar power systems.

Can you wire solar panels in series or parallel?

Yes, you can wire solar panels in series or parallel. In some cases, you can even wire solar panels in both series and parallel simultaneously. For

example, if you have two panels with 12V each, wire them in series to start. Then, assuming you have another 24V panel, you can wire them together in parallel.

How do solar panels connect in parallel?

This connection wires solar panels in series by connecting positive to negative terminals to increase voltage and connects these strings in parallel. All solar panel strings connected in parallel have to feature the same voltage, and they also have to comply with the NEC 690.7, NEC 690.8 (A) (1), and NEC 690.8 (A) (2).

How to connect two series and two parallel photovoltaic panels



The Complete Guide to Solar Panel Wiring Diagrams

Connecting PV modules in series and parallel are the two basic options, but you can also combine series and parallel wiring to create a hybrid solar panel array. Some solar panels have microinverters built-in, which ...

Connect Solar Panels To An Inverter: A Step-by-Step ...

Parallel connections are useful when you need to increase the current of your solar panel system, such as when you have shading issues on some of your panels. Series-Parallel Connection. A series-parallel connection combines ...



How to wire solar panels in series vs. parallel

When you connect the positive terminal of one panel to the negative terminal of another panel, you create a series connection. When you connect two or more solar panels like this, it becomes a PV source circuit. When solar panels are ...



Connecting Solar Panels in Series or in Parallel?

Decide whether to connect your solar panels in

series, parallel, or series-parallel. Parallel is often best for small systems of 2 or 3 PV panels. However, you must evaluate the optimal option for 4 x 400W rigid solar panels ...



Connecting Solar Panels: How To Wire In Series & Parallel ...

Connecting Solar Panels: Solar Panel Wiring In Series & Parallel. Wiring solar panels is also known as stringing. The way you do it determines the voltage and current that'll ...

Connecting Photovoltaic Panels Methods and Best Practices

2. What is the series connection of photovoltaic panels? Series connection of photovoltaic panels involves connecting the positive terminal of one panel to the negative terminal of the next, ...



How to connect solar panels in parallel and series

Connecting two portable solar panels, or any other type of solar panel, (same wattage) in parallel will multiply the total power output current by 2 and keep the system voltage at the same level. Parallel solar panel connections should be ...



Schematics: Wiring Solar Panels and Batteries in Series and Parallel

Two parallel strings of two modules in series. Electrical equipment is rated by how much electricity they use, make, or store. For example, a 100W solar panel can make (under standard test ...



How To Wire Solar Panels In Series vs Parallel (For ...

We're going to show you step-by-step how to connect your solar panels either in a series or parallel circuit, which circuit wiring is better, and how to correctly plug these solar kits into

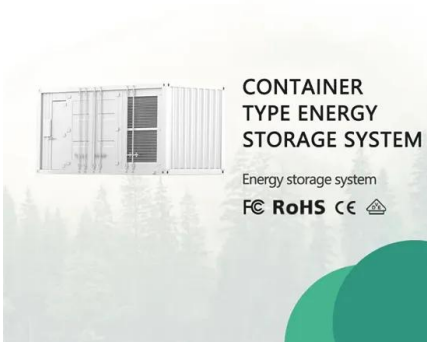
A Step-by-Step Guide to Wiring Solar Panels in Parallel: Diagram ...

When it comes to wiring solar panels together, there are two main options: series and parallel. In this article, we will focus on wiring solar panels in parallel and provide a diagram to illustrate ...



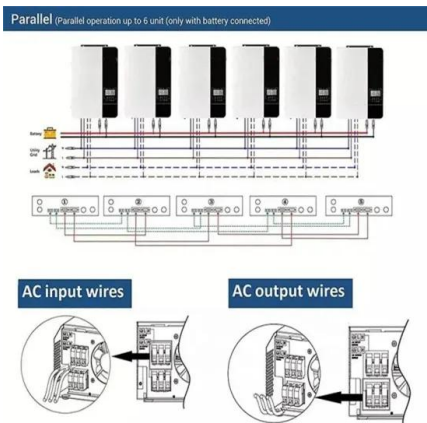
Solar Panel Connection

Series . Wiring multiple solar panels in series means you are wiring each panel to the next. This solar panel connection creates a string circuit. The wire that runs from the solar panel's negative terminal is connected to the next panel's ...



Solar Panel Series Vs Parallel: Wiring, Differences, And Your Right

In this tutorial, I'll show you how to wire solar panels in series and how to wire them in parallel. Once we've got that covered, I'll also explain the difference between these ...



Connect Solar Panels To An Inverter: A Step-by-Step Guide

Parallel connections are useful when you need to increase the current of your solar panel system, such as when you have shading issues on some of your panels. Series-Parallel Connection. A ...

Connecting Multiple Solar Panels - Series vs. Parallel

The idea is to establish strings (series connection of two or more panels) and connect them in parallel with other strings (creating arrays of strings). This allows to obtain the advantages of the series connection (lower ...



- TELECOM CABINET
- BRAND NEW ORIGINAL
- HIGH-EFFICIENCY



How to Wire Two or More Solar Panels in Parallel

To solve this problem and to optimize the energy performance of the entire system, it is advisable to wire two panels in series (obtaining a doubling of the voltage) and then wire in parallel the ...

Contact Us

For catalog requests, pricing, or partnerships, please visit:
<https://ssab-proiect.eu>