

European Solar and Energy Storage Solutions

How to match photovoltaic panel batteries



Overview

Step By Step Guide to Connect Solar Panel to Battery.

Solar inverter: Select one compatible with your battery type and system voltage. Battery cables: Use appropriately sized cables that can handle the current load without overheating. Connectors: Ring terminals or.

As a general rule of thumb, a 1:1 ratio of battery amp-hours (Ah) to solar panel watts is a good starting point for most applications. This ratio ensures that your battery receives sufficient charge from the solar.

Let's take a look at the general rule of thumb mentioned earlier: a 1:1 ratio of batteries and watts. A 200-watt panel and 200aH battery is a great combination to begin with. If you're using a 200-watt solar panel.

How to match photovoltaic panel batteries



Deye Official Store

10 years warranty

Connect Solar Panels To An Inverter: A Step-by-Step Guide

PWM controllers reduce the voltage of the solar panel to match the voltage of the battery bank, which results in a loss of power. MPPT controllers, on the other hand, convert the excess ...

Simple Ways to Charge a Battery with a Solar Panel: 11

...

Charging your batteries with a solar panel is a great way to use clean, renewable energy. However, before you can get started, you'll need to install a charge controller, which regulates the voltage from the solar panel as ...



IP65/IP55 OUTDOOR CABINET

OUTDOOR MODULE CABINET

OUTDOOR 5G BASE STATION CABINET

WATERPROOF

400W Solar Panel Kit (DIY): What Size Battery, Charge ...

Battery Bank Size (Ah) = (Solar panel total watt-hours (Wh)/solar panel voltage) x 2 (for lead-acid battery type) you can expect 18-20 voltage output from your 12v solar panel system so the charge controller will ...

Choosing and Sizing Batteries, Charge Controllers and Inverters ...

Once you have sized your battery bank and solar panel array, determining which charge controller to use is comparatively straight forward. All we have to do is find the current through the ...



Solar Panel to Battery Ratio: Optimizing Your Solar ...

To ensure optimal performance and energy storage, it is essential to understand the ideal solar panel to battery ratio. This article will provide a comprehensive guide on how to match your solar panels and ...



Solar Panel Wiring Basics: Complete Guide & Tips to Wire a PV ...

Key concepts and items required for solar panel wiring Solar Panel String. The "solar panel string" is the most basic and important concept in solar panel wiring. This is simply ...



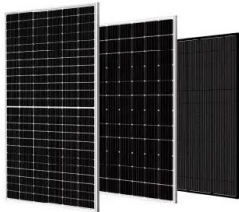
Wiring solar panels, charge controller and battery ...

A charge controller acts as a safety barrier between panels and a battery and should be a part of every home solar panel installation. In this article, we'll explain how to wire together solar panels, a regulator and a battery.



How to Connect Solar Panels to Battery and Inverter

Connecting Solar Panel to Battery and Inverter. Connecting your solar panel system to a battery and inverter is crucial in harnessing solar energy efficiently. This section will break down the ...



Choosing and Sizing Batteries, Charge Controllers ...

Once you have sized your battery bank and solar panel array, determining which charge controller to use is comparatively straight forward. All we have to do is find the current through the controller by using $\text{power} = \text{voltage} \times \text{current}$. Take the ...

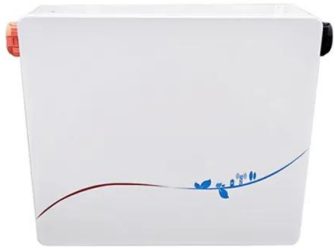
How to match Solar Panel Voltage and battery ...

Solar panels, battery bank voltage, and Charge Controller balancing are important in the Hybrid PCU or Off-grid Solar Application. The major challenge Solar Installers face when installing the Solar Storage ...



Solar Panel to Battery & Inverter Connection Guide

Welcome to our comprehensive guide on how to connect a solar panel to a battery and inverter this article, we will provide you with a step-by-step guide, accompanying diagrams, and essential tips to help you set up an ...



Solar Panel to Battery & Inverter Connection Guide

The steps to connect a solar panel to a battery and inverter are as follows: 1) Choose the right solar panel and battery for your energy needs. 2) Install the solar panel in a location with maximum sunlight exposure and orient ...



How To Connect Solar Panels To Battery and Inverter

Configure the charge controller settings to match your battery type. To connect the solar panel, use MC4 solar adapter cables, attaching the negative line to the negative solar panel input and the positive line to the ...



Contact Us

For catalog requests, pricing, or partnerships, please visit:
<https://ssab-proiect.eu>