

European Solar and Energy Storage Solutions

How to match photovoltaic panels with dual batteries



18650 CELL



18650 Battery Pack 2S1P



18650 Battery Pack
4S1P



Overview

What is a good connection between solar panels and batteries?

A well-made connection between your solar panels, inverter, and batteries offers several advantages for your solar energy system: Maximizes electricity generation by efficiently converting solar energy into usable electrical power. Optimizes the performance of the entire system, ensuring that you get the most out of your solar panels and batteries.

Can I use a 12 volt battery to connect solar panels?

Let's look at each part: You can use any size battery to connect solar panels, but I recommend a 12 volt. It's the most common size used for solar panel connections. If you are wondering which types of batteries work for your solar panels, read our guide on whether or not you can use higher mAh batteries on your solar panels.

How to connect solar panels and batteries in parallel?

Two or more similar batteries are used to connect solar panels and batteries in parallel. The identical positive poles must be linked to each other with positive to connect the batteries in parallel. A solar charge controller is also used to link the negative terminal to the negative terminal.

Can a solar panel charge two batteries?

If two batteries are linked in parallel, a single solar panel may charge both. To guarantee that the batteries receive the necessary current and are not overwhelmed, a charge controller is required. [How Many and What Sized Solar Panels Are Required To Charge 2 Batteries?](#)

To charge two batteries, you may technically utilize any size solar panel.

How to connect a solar panel to a battery?

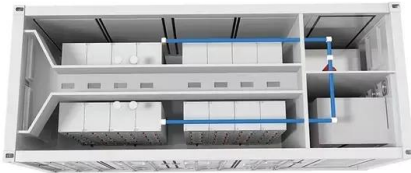
Connect the Solar Panel to the Charge Controller After connecting the charge

controller to the battery, it's time to connect the solar panel to the charge controller. Ensure that the connections are made in the proper sequence according to the manufacturer's instructions. This will allow for optimal energy transfer and utilization.

Can a solar panel be wired to a battery?

Wiring Solar Panels to 2 Batteries (Key Guide) - Solar Panel Installation, Mounting, Settings, and Repair. When the sun is shining, solar panel batteries allow you to store the energy generated by the panels. It may be used when there isn't any light, such as at night or on overcast days.

How to match photovoltaic panels with dual batteries



How to Connect Solar Panels to Battery and Inverter

Series Connection: Connect Positive and Negative Terminals: Connect the positive terminal of one solar panel to the negative terminal of the next panel. Repeat this process for all panels in the series. **Maintain Polarity:** Ensure you ...

How to Charge Multiple Batteries with One Solar Panel

Charge controllers are essential for managing the energy flow from the solar panel to the batteries, ensuring optimal charging. Choosing the right charge controller is vital to regulate the energy effectively. It's also ...



Matching solar modules to MPPT charge controllers

Life used to be so simple; in a 12V battery system you took a '12V' solar module, watched carefully that the maximum PV current would not exceed the charge controller maximum current and the system would work. ...



Wind Turbine & Solar Panel Combinations: A Guide to Hybrid ...

Wind Turbine & Solar Panel Combinations: A Guide to Hybrid Systems. It's advice most of us have heard since we were children: don't put all your eggs in one basket. That still holds true ...

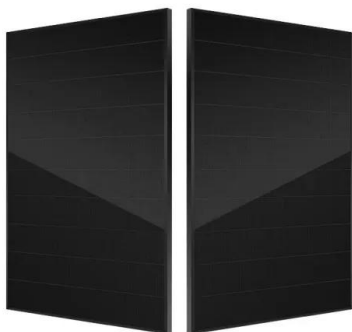


How to Charge a 12V Battery Using Solar Panels?

Step 4: Position the Solar Panels Under Direct Sunlight . Lastly, you'll want to set up your solar panels with optimal orientation for the best light exposure. You can either mount rigid solar panels on your vehicle or ...

Dual Battery System Setup: A Beginners Guide , Jack ...

Whether it's for work or off-road adventures if you're running a winch, air compressors, portable fridge, lights, radios, or even adding USB outlets while your 4x4 is parked, your electrical system can only handle so much so a ...

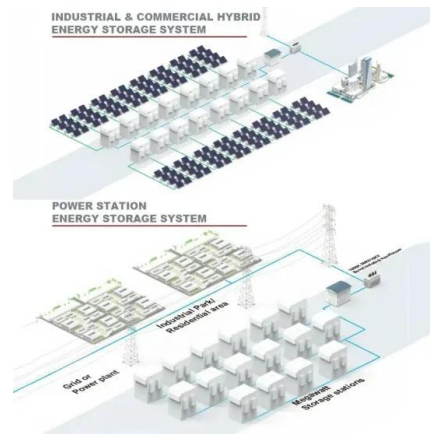


Series, Parallel & Series-Parallel Connection of PV Panels

Step 1: Note the voltage requirement of the PV array Since we have to connect N-number of modules in series we must know the required voltage from the PV array. PV array open-circuit ...

Wiring solar panels, charge controller and battery together

Use the black wire to match the charge controller "minus" with the battery "minus". 3. Use the red wire to match the charge controller "plus" with the battery "plus" 4. ...



Solar Panel to Battery & Inverter Connection Guide

To connect a solar panel to a battery and inverter, you will need to follow a step-by-step process. First, choose a suitable solar panel and battery for your energy needs. Install the solar panel in a location with maximum ...

How to Connect a Solar Panel to a Battery, Solar ...

Two batteries; Solar panels; A combiner box; A solar charge controller; An inverter; All of these work together to convert solar energy into electric energy. Let's look at each part: Battery. You can use any size battery ...



Series, Parallel & Series-Parallel Connection of PV ...

Step 1: Note the voltage requirement of the PV array Since we have to connect N-number of modules in series we must know the required voltage from the PV array. PV array open-circuit voltage V OCA; PV array voltage at maximum ...



How to Connect a Solar Panel to a Battery, Solar ...

How to Connect a Solar Panel to a Battery. Start by connecting the two 12V solar panels in parallel. This connection will preserve the voltage to match the battery bank. For a parallel connection, you need a combiner box. ...



Contact Us

For catalog requests, pricing, or partnerships, please visit:
<https://ssab-proiect.eu>