

European Solar and Energy Storage Solutions

How to measure the 90 degree angle of photovoltaic panels



Overview

Here are two simple methods for calculating approximate solar panel angle according to your latitude. Calculation method one. The optimum tilt angle is calculated by adding 15 degrees to your latitude during winter, and subtracting 15 degrees from your latitude during summer. For instance, if your latitude is 34° , the optimum tilt angle for .

Here are two simple methods for calculating approximate solar panel angle according to your latitude. Calculation method one. The optimum tilt angle is calculated by adding 15 degrees to your latitude during winter, and subtracting 15 degrees from your latitude during summer. For instance, if your latitude is 34° , the optimum tilt angle for .

Our guide on solar panel angles explains how adjusting the tilt can optimize energy production, maximizing solar output.

The tilt angle of your solar panels should ideally match the angle of the sun's rays for maximum sunlight absorption. This angle varies depending on your geographic location, the time of year, and the specific daily trajectory of the sun across the sky.

How to Find Your Ideal Solar Panel Angle. Scroll to the top of this page to use our Solar Panel Tilt Angle Calculator. Simply enter your address and it will provide the optimal angles for each season, as well as a year-round average angle for your specific location. An example of the calculator results.

The solar panel tilt angle is the angle made by panels with the ground surface. It is a positive number and expressed in the degree. When the angle is 0° , it means panels are fully flat, parallel to the ground. And 90° indicates solar panels are perfectly vertical, perpendicular to the ground.

How to measure the 90 degree angle of photovoltaic panels



How to calculate the best solar panel angle and ...

For due south (0° azimuth angles), the insolation amount increases to the maximum when the solar panel angle of tilt gradually transitions from horizontal (0° azimuth to 0° degrees), and then decreases as the solar ...

Solar Panel Azimuth Angle Calculator

What Is a Solar Panel's Azimuth Angle? The azimuth angle is the direction that a solar panel faces. It is often expressed in degrees clockwise from true north. So an azimuth angle of 180° clockwise from true north would mean ...



Optimal Solar Panel Tilt Angle Calculator

The tilt angle of solar panels is the angle made by solar panels with the ground surface. It is denoted by the symbol t . The angle is always positive and between 0° and 90° . When solar panels are completely flat, the ...



Estimation of optimal tilt angles for photovoltaic panels in Egypt ...

For each month the tilt is changed from 0 to 90 degree, and then the angle of maximum radiation is determined. Kecili, I., Nebbali, R. & Saada, S. A. Optimal tilt angle of ...



Solar Angle Calculator , Solar Panel Angle Calculator

solar angle calculator: Select your country from the list. If you have selected America or Canada, select your state or province. Select the town or city nearest where you live. The calculator will ...

What's the Best Angle for Solar Panels? , EnergySage

For maximum output, the sweet spot for solar panels in the continental U.S. is facing roughly south and tilted between 15 and 40 degrees, according to the Department of Energy. That keeps the panels in the sun ...

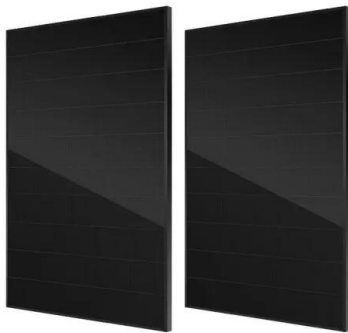


How to Calculate Solar Panel Tilt Angle?

This article is the perfect guide to calculate solar panel tilt angle. It is a positive number and expressed in the degree. When the angle is 0°, it means panels are fully flat, parallel to the ground. And 90° indicates solar ...

Solar Panel Tilt Angle Calculator

The tilt angle of your solar panels should ideally match the angle of the sun's rays for maximum sunlight absorption. This angle varies depending on your geographic location, the time of year, and the specific daily trajectory ...



Optimal Solar Panel Tilt Angle Calculator

Select your timezone and enter your coordinates (latitude and longitude) to calculate the optimal tilt angle for fixed solar panels, twice adjusted solar panels, quarterly (seasonally) adjusted solar panels, and monthly ...

Calculate Your Optimal Solar Panel Tilt Angle

Maximizing Your Solar PV Output: Finding Your Ideal Solar Panel Tilt Angle The ideal angle to tilt your solar panels plays a vital role in maximizing their efficiency and output. This article aims ...



How to calculate the best solar panel angle and installation guide

For due south (0° azimuth angles), the insolation amount increases to the maximum when the solar panel angle of tilt gradually transitions from horizontal (0° azimuth to ...



Solar Panel Angle: how to calculate solar panel tilt ...

Here are two simple methods for calculating approximate solar panel angle according to your latitude. Calculation method one. The optimum tilt angle is calculated by adding 15 degrees to your latitude during winter, and ...



Contact Us

For catalog requests, pricing, or partnerships, please visit:
<https://ssab-proiect.eu>