

European Solar and Energy Storage Solutions

How to try out the 2m photovoltaic panel



Overview

The first factor in calculating solar panel output is the power rating. There are mainly 3 different classes of solar panels: 1. Small solar panels: 50W and 100W panels. 2. Standard solar panels: 200W, 250W, 300W, 350W, 500W panels. There are a lot of in-between power ratings like 265W, for example. 3. Big solar panel.

If the sun would be shining at STC test conditions 24 hours per day, 300W panels would produce 300W output all the time (minus the system 25% losses). However, we all know that the sun.

Every electric system experiences losses. Solar panels are no exception. Being able to capture 100% of generated solar panel output would be perfect.

Based on this solar panel output equation, we will explain how you can calculate how many kWh per day your solar panel will generate. We will also calculate how many kWh per year do solar panels generate and how much does that save you on electricity.

Based on this solar panel output equation, we will explain how you can calculate how many kWh per day your solar panel will generate. We will also calculate how many kWh per year do solar panels generate and how much does that save you on electricity.

Fill out the form for a complimentary solar quote that includes a custom satellite layout, system design and a breakdown of total project cost and estimated savings. Learn how to size a solar system for your home. Here's our step-by-step guide on sizing a solar system that meets your energy needs.

Solar panel power rating. In this article, we'll show you how to manually calculate how many panels you'll need to power your home. Once you have an estimate for the number of panels, you're one step close to figuring out how much solar costs for your home, and how much you can save on electricity bills.

Design a successful Solar PV System with our comprehensive guide. Understand solar potential, system size, panel selection, regulations, and incentives. Designing a solar photovoltaic (PV) system can be a rewarding

endeavor, both environmentally and financially.

Make sure your roof can support solar panels. A solar installer, roofing expert, or structural engineer can help you determine your roof's solar suitability. It can help to know when your roof was installed or replaced, but if you don't know and can't ask the previous homeowners, your local government should have a record of when it .

How to try out the 2m photovoltaic panel



Understanding STC In Solar Panels: PV Test Conditions Explained

This chart tells us that all those solar panel power ratings, voltages, and currents are measured at: Solar irradiance of 1,000 W/m². In the real world, we get 0 W/m² at night and up to about ...

How do you space a ground-mounted array?

Finally, for the visually oriented, try Google Sketchup - it's a free drawing tool with incredible shading functions. Build your site on an actual map and then lay it out with PV for predicted spacing - then watch the sun for the whole year to see ...



Solar Panels: Everything You Need To Know

The best-known part of a solar power system is the Solar Panels. Solar energy is probably the most popular renewable energy in the world today.. The solar power industry is ever-growing, and as always, new ...



How to Size a Solar System [Step-by-Step Guide]

Fill out the form for a complimentary solar quote that includes a custom satellite layout, system design and a breakdown of total project cost and estimated savings. Learn how to size a solar system for your home. Here's our step-by ...

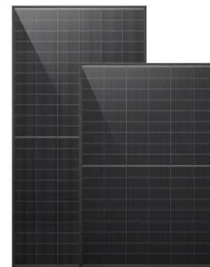


How Many Solar Panels Do I Need To Power a House?

Solar panel power rating. In this article, we'll show you how to manually calculate how many panels you'll need to power your home. Once you have an estimate for the number of panels, you're one step close to figuring ...

How to Size a PV System from an Electricity Bill

Equally important, your ability to read these bills is a prerequisite for correctly sizing each customer's photovoltaic (PV) system for optimal utility bill savings and carbon offsets. Click the image to download the full guide in printable form.



How to Design a Solar PV System: A Comprehensive ...

Design a successful Solar PV System with our comprehensive guide. Understand solar potential, system size, panel selection, regulations, and incentives. Designing a solar photovoltaic (PV) system can be a rewarding ...



Best Practices for Installing Bifacial Solar Panels

Bifacial solar panels represent a significant advancement in photovoltaic technology, offering the potential to capture sunlight from both their front and rear surfaces. This innovative design can increase energy yield by 5 ...

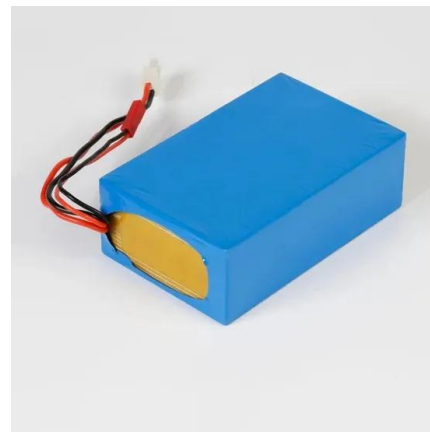


3-In-1 Solar Calculators: kWh Needs, Size, Savings, ...

Combined, these solar panel calculators will give you an idea of how big a solar system you need, how many kWh per year will it generate, how much you'll save by switching to solar in the following years/decades, and if all of this is actually ...

How Much Electricity Does A Solar Panel Produce?

This article covers how much electricity a solar panel produces and the other factors that can affect the amount of energy your solar panels can produce. Free solar quote comparison. How much electricity will a 1kW or ...



Solar Panel Sizes And Wattage , Sizing, Dimensions

Watt (W) and kilowatt (kW): a unit used to quantify the rate of energy transfer. One kilowatt = 1000 watts. Solar panels' rating in watts specifies the maximum power the solar panel can deliver at any time, providing insights ...



How to Size a Solar System [Step-by-Step Guide]

If your solar panel's performance warranty guarantees 80% performance after 25 years, then their degradation rate is calculated as 20%/25 years, or 0.8% production loss each year. By the end of its lifecycle, a 400W-rated panel ...



APPLICATION SCENARIOS



Solar Panel Output Calculator

Use this solar panel output calculator to find out the total output, production, or power generation from your solar panels per day, month, or in year. Also, I'm gonna share some tips to get the maximum power output from your ...

How close to the edge of your roof can your solar ...

In the past I've written about solar panel clamping zones which determine where, on a solar panel's edge, you can place the clamps that attach the modules to their mounting rails. What I didn't do was go into just where on ...





How to Design a Solar PV System

Designing a simple solar PV system involves considering your energy requirements, analyzing site conditions, selecting appropriate solar panels, sizing the inverter and charge controller, and optimizing panel placement. Follow the ...

Solar Panel Output

Annual Solar Panel Energy Output (in kWh) = $kK \times \text{system kWp}$. A rough kK value you can use for most of the UK is: 950 kWh/kWp per year. So say we have a 4 kWp solar panel system we estimate that the annual output will be: Energy ...



Contact Us

For catalog requests, pricing, or partnerships, please visit:
<https://ssab-proiect.eu>