

## European Solar and Energy Storage Solutions

# Http reflectorbital com French Southern Territories



## Overview

---

The French Southern and Antarctic Lands (French: Terres australes et antarctiques françaises, TAAF) is an overseas territory (French: Territoire d'outre-mer or TOM) of France. It consists of: Adélie Land (Terre Adélie), the French claim on the continent of Antarctica. Crozet Islands (Îles Crozet), a group in the southern Indian.

The French Southern and Antarctic Lands are an overseas territory of France that consist of the following: • (Terre Adélie): This is the French claim on the continent of .

The territory includes the Crozet Islands, the Kerguelen Islands, and the Saint Paul and Amsterdam Islands in the southern Indian Ocean near 43°S, 67°E, along with Adélie Land, the sector of Antarctica claimed by France. Adélie Land, named by the French explorer.

The territory's natural resources are limited to fish and crustaceans. Economic activity is limited to servicing and research stations and French and other fishing fleets. The main fish resources are and .

The French Southern Territories (i.e. the TAAF excluding Adélie Land) have been given the following : FS () and ().

The French Southern and Antarctic Lands have formed a (an overseas territory) of since 1955. Formerly, they were administered from by an administrateur supérieur assisted by a secretary-general; since December 2004.

Due to their isolation, the French islands in the southern Indian Ocean comprise one of the last remaining large wilderness areas on Earth. Furthermore, the islands are positioned along the , where creates nutrient-rich waters. As a.

In the territory there is no permanent population but there are some areas that contain research stations. Ile Amsterdam has . Iles Crozet contains the Alfred Faure research station that contains about 20-30 people. One of the most populous.

What are the French Southern & Antarctic Lands?

The French Southern and Antarctic Lands are an overseas territory of France that consist of the following: Adélie Land (Terre Adélie): This is the French claim on the continent of Antarctica. Crozet Islands (Îles Crozet): A group of islands in the southern Indian Ocean, located south of Madagascar.

What is the French Southern Territories?

The territory is sometimes referred to as the French Southern Lands (French: Terres australes françaises) or the French Southern Territories, usually to emphasize non-recognition of French sovereignty over Adélie Land as part of the Antarctic Treaty System. The entire territory has no known permanently settled inhabitants.

Which country codes are used in the French Southern Territories?

The French Southern Territories (i.e. the TAAF excluding Adélie Land) have been given the following country codes: FS (FIPS) and TF (ISO 3166-1 alpha-2). The French Southern and Antarctic Lands is an overseas territory of France. It consists of: Adélie Land, the French claim on the continent of Antarctica.

Are there trees in the French Southern Lands?

Because of their isolation and subpolar location, the French Southern Lands are relatively depauperate of vegetation, with both Saint-Paul and Crozet having no native tree or shrub species. However, eight of the 36 higher plant species are endemic.

## Http reflectorbital com French Southern Territories

---

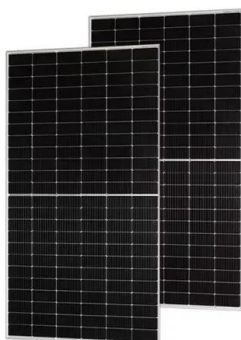


### French Southern Territories

EU27 Merchandise trade with French Southern Territories by product (2023) - SITC (UN) & AMA/NAMA (WTO) Source Eurostat Trade in services French Southern Territories with World Source World Trade Organization EU27 with French Southern Territories Source Eurostat Foreign Direct Investment EU27 FDI Flows with French Southern Territories Source

### France in Antarctica

French Southern and Antarctic Territories . The senior administrator of the French Southern and Antarctic Territories is the national competent authority for implementing the Protocol on Environmental Protection to the Antarctic Treaty (the Madrid Protocol) regulating human activities in Antarctica. It authorizes and monitors activities under



### French Southern and Antarctic Territories

French Southern and Antarctic Territories, French overseas territory consisting of the islands of Saint-Paul and Nouvelle Amsterdam and the island groups of Kerguelen and Crozet in the southern Indian Ocean, as well as the Adélie Coast on the Antarctic continent.

### About: Postage stamps and postal history of the French

## Southern ...

The French Southern and Antarctic Territories (French: Terres australes et antarctiques françaises, abbreviated TAAF) is a French overseas territory consisting of Adélie Land in coastal Antarctica and several islands in the southern Indian Ocean: the Crozet Islands, the Kerguelen Islands, Amsterdam Island and Île Saint-Paul. The territory was created on 6 August 1955, ...



## French Southern and Antarctic Lands

The territory includes Île Amsterdam, Île Saint-Paul, Îles Crozet, and Îles Kerguelen in the southern Indian Ocean near 43°S, 67°E, along with the French-claimed sector of Antarctica, Adélie Land, named by French explorer Jules Dumont d'Urville after his wife.

## French Colonies

The French Southern and Antarctic Territories -- Terres Australes et Antarctiques Françaises (TAAF) -- form an overseas territory of France, established in 1955, that consists of several groups of islands in the southern Indian Ocean and a sector of Antarctica (see maps) that is claimed by France. The Antarctic territory is called Adélie Coast (Terre Adélie).



## French Southern and Antarctic Lands

The Southern Lands are now divided into five administrative districts, two of which are archipelagos, Iles Crozet and Iles Kerguelen; the third is a district composed of two volcanic islands, Ile Saint-Paul and Ile Amsterdam; the

fourth, Iles Eparses, consists of five scattered tropical islands around Madagascar.



??????????

??????????(?:Terres australes et antarctiques françaises;?:French Southern and Antarctic Territory;??TAAF)?7781????(????????????????????432000???)?????,????????????????????



## French Southern and Antarctic Territories

French Southern and Antarctic Territories, French overseas territory consisting of the islands of Saint-Paul and Nouvelle Amsterdam and the island groups of Kerguelen and Crozet in the southern Indian Ocean, as well as the Adélie Coast on the Antarctic continent. The barren and for the most part uninhabited lands were linked for administrative purposes with Madagascar from ...

## French Southern and Antarctic Lands

French Southern and Antarctic Lands (French: Terres australes et antarctiques françaises, or TAAF;) are a group of islands of the Indian Ocean, about equidistant between Africa,

Antarctica, and mainland Australia along with a narrow strip of Antarctica, known as Adélie Land.



## French Southern Territories Country Code, French Southern Territories

262 which country's area code? The French Southern Territories telephone country code is the number 262. If you want to call French Southern Territories from another country, you can do it dialing the number 262, before the entire telephone number (The dialing code or calling code or phone code of French Southern Territories starts with +262). The top level 262 domain or TLD ...

## FRENCH SOUTHERN AND ANTARCTIC TERRITORIES

The French Southern and Antarctic Lands, in full the Territory of the French Southern and Antarctic Lands is an overseas territory of France. It consists of: Kerguelen, a group of volcanic islands in the southern Indian Ocean, southeast of Africa, approximately equidistant between Africa, Antarctica and Australia; St. Paul and Amsterdam islands



## French Southern and Antarctic Lands



The French Southern and Antarctic Lands [6] (French: Terres australes et antarctiques françaises, TAAF) is an overseas territory (French: Territoire d'outre-mer or TOM) of France. It consists of: Adélie Land (Terre Adélie), the French claim on the continent of Antarctica.

## French Southern and Antarctic Lands

The French Southern and Antarctic Lands are an overseas territory of France that consist of the following: Adélie Land (Terre Adélie): This is the French claim on the continent of Antarctica. Crozet Islands (Îles Crozet): A group of islands in the ...



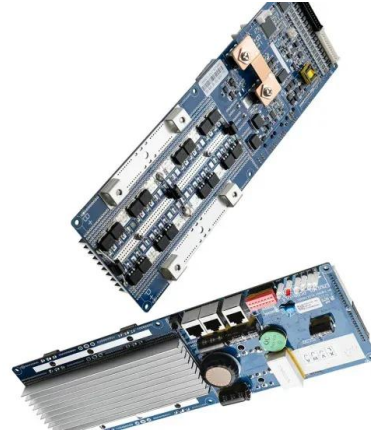
## National flag of French Southern Territories

The official name of French Southern Territories (ATF) is Terres australes et antarctiques françaises and consists of flag colors. The capital city of French Southern Territories is . French Southern Territories has the total estimated population as of ...



??????

??????,??5?????4??????2????????????????????1946??  
 ?4????:????????????????????,??2011????????????????  
 ??????????????:????????????,?????????,????????? ...



## Stamps of French Southern & Antarctic Territories

1971, Jan 1 1971 issue - fishes (1971 French Southern & Antarctic Territories) (8 stamps) - 5fr: multi: *Chaenichthys rhinoceratus* - 10fr: multi: *Notothenia rossii* - 20fr: multi: *Notothenia coriiceps* - 22fr: multi: *Trematomus hansonii* - 25fr: *Notothenia macrocephala* - 30fr: *Notothenia cyanobranca* - 35fr:

## Contact Us

---

For catalog requests, pricing, or partnerships, please visit:  
<https://ssab-proiect.eu>