

European Solar and Energy Storage Solutions

Installation height of rooftop photovoltaic panels



**European
Warehouse**



 **7-15 days**
Delivery

ONE-STOP SOLUTION

65kWh 30kW

130kWh 30kW

130kWh 60kW



Overview

Before you begin the installation process, properly plan your solar panel system. This involves assessing your roof's suitability, determining the number of panels you need, and obtaining the necessary permits.

The first step in the physical installation process is securing the roof attachments supporting the solar panels. First, the installer will find the rafters beneath your roof shingles. They'll

With the stanchions in place, the next step is installing the racking to support the solar panels. Trethewey and Warda use aluminum rails for their.

With the mounting system and electrical components in place, Trethewey and Warda install the solar panels. Each panel is bulky and heavy, so lifting them onto the roof is often a two-person job. Once each panel is in place.

Before the panels can go on, their electrical conduit and wiring must be in place. A licensed electrician is often the one doing this work. First.

Solar panels should be mounted at a height of 3.75" to 5.25" from the roof's surface to ensure optimal performance.

Solar panels should be mounted at a height of 3.75" to 5.25" from the roof's surface to ensure optimal performance.

The first step in planning your solar panel installation is to evaluate your roof's condition and suitability. In the Northern Hemisphere, a south-facing roof pitched between 30 and 45 degrees is considered ideal for solar panels. Your roof should be in good condition and able to support the additional weight.

Bigger chunks of roof are easier, and cheaper, to install solar panels. Keep in mind that a standard residential solar panel is roughly five and a half feet tall by three feet wide. Pictured below, this 290 to 320 watt solar panel from URE represents a standard residential product.

The size of the path along the ridge depends on how much of the roof is covered in PV panels. For roofs where PV panels cover up to 33% of the total area in plan view (essentially, as seen from above), the panels must be at

least 18 in. away from a horizontal ridge on both sides to create the 36-in.-wide path.

Step 1: Identify the Roof Space. Solar rooftop panels are installed using solar mounts. Identifying the area for solar panel installation helps determine how many solar mounts you need. Also, while identifying the total rooftop area, you can specify the extent of shade-free area. Can you install solar panels on a flat roof?

Ballast systems are simply a weighted racking setup that holds solar panels in place. If you need to drill into your flat roof to install solar panels, don't worry – your solar installer will ensure that the holes they drill are as small as possible and sealed correctly to avoid roof damage or leaking. Can you install solar panels on wooden roofs?

.

How to choose a solar roof?

Solar rooftop panels are installed using solar mounts. Identifying the area for solar panel installation helps determine how many solar mounts you need. Also, while identifying the total rooftop area, you can specify the extent of shade-free area. Ascertain the endurance capacity of the roof, as the solar panels are bound to weigh heavy on it.

What is a good roof angle for solar panels?

In the Northern Hemisphere, a south-facing roof pitched between 30 and 45 degrees is considered ideal for solar panels. Your roof should be in good condition and able to support the additional weight. You should also identify obstructions, such as nearby trees or buildings, that could cast shadows on your panels.

Can solar panels be installed on a commercial roof?

If you're considering installing a residential or commercial solar panel system, you might wonder if your roof type is appropriate for a solar installation. The good news is that solar panels can be installed on just about any roof type, but the installation process and mounting hardware might vary from material to material.

How big should a solar panel be?

Bigger chunks of roof are easier, and cheaper, to install solar panels. Keep in mind that a standard residential solar panel is roughly five and a half feet tall by three feet wide. Pictured below, this 290 to 320 watt solar panel from URE represents a standard residential product. Panel sizes vary by manufacturer and model.

How long does it take to install solar panels on a roof?

Installing ground-mounted solar systems requires special permits and allowances based on location, and the process can take from a few days to several months. Solar panels on roofs have ensured affordability and accessibility in solar energy usage. However, it is necessary to be aware of the precautions before installing. Here are a few:

Installation height of rooftop photovoltaic panels



Correct Installation of Photovoltaic (PV) System

PV system installed on roof of village houses. PV system exceeding the height of 1.5m should be certified by an Authorized Person who is registered under the Buildings Ordinance for submission of a safety certificate ...

Rules for Rooftop Solar

The size of the path along the ridge depends on how much of the roof is covered in PV panels. For roofs where PV panels cover up to 33% of the total area in plan view (essentially, as seen from above), the panels must be at least 18 in. ...



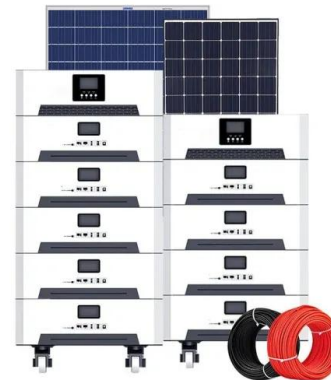
Best practices for installing rooftop solar panels

In this blog, we've put together 18 of our top tips for choosing, installing, and maintaining rooftop solar panels for peak performance. Solar panel installation doesn't have to be a chore. With fundamental know-how, careful planning, and ...

How High Off The Roof Should Solar Panels Be Mounted?

Solar panels should be mounted at a height of

3.75? to 5.25? from the roof's surface to ensure optimal performance. This measurement takes into account the seam of the SSMR, typically 1.5? to 3? in height, the mounting hardware, ...

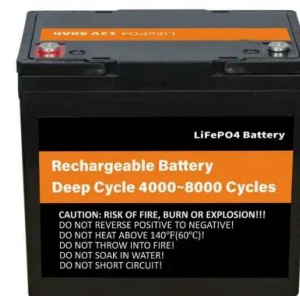


The Ultimate Guide to Solar Panel Roof Mounts: ...

Before beginning the installation, it's important to assess the suitability of your roof for solar panel installation. Factors to consider include the roof's orientation, angle, and structural integrity. Ideally, the roof should be ...

Installing Solar Panels on Different Roof Types

The good news is that solar panels can be installed on just about any roof type, but the installation process and mounting hardware might vary from material to material. In this article, we'll explore the many kinds of ...



Structural Requirements for Solar Panels -- Exactus ...

While there is no strict minimum roof age for solar panel installation, newer roofs built with modern materials and properly maintained are generally better candidates. Solar panels have a lifespan of 25 to 30 years, ...

A Guide to Metal Roof Solar Installation , Greentech Renewables

Greentech Renewables has organized crucial insights to help solar installers understand the most cost-effective and safest options when working on metal roof solar installations. The following ...



Roofing Requirements for Solar Panel Installation: ...

Ideally, a solar panel system should be installed on a roof that faces south and has a slope of 30 degrees. However, not all roofs have this optimal orientation. Consult a professional solar panel installer who can conduct a site ...

How to Install Solar Panels on a Roof: A Step-by-Step ...

Step 1: Identify the Roof Space. Solar rooftop panels are installed using solar mounts. Identifying the area for solar panel installation helps determine how many solar mounts you need. Also, while identifying the total ...



Guide to Solar Panel Sizes & Dimensions (November ...

Some common solar panel system sizes include a 3kW solar panel system, a 4 kilowatt solar panel system and a 5kW solar panels. For instance, a typical 2kW solar panel system suited for 1-3 people will need ...



Installing solar panels safely , Health and Safety Executive for

Roof work is dangerous Working on a roof can be dangerous Solar panel installation is not short duration work and will need scaffolding or similar equipment should have a boarded working ...



4 Common Hazards During Solar Installation

As rooftop solar installations grow, so grows the need to access the roof safely. Part of roof top safety is having a proper rooftop railing installed. On a metal roof there are other safety concerns. The metal ribs can cause a significant trip ...

Solar 101: Attaching your solar system to your roof

Bigger chunks of roof are easier, and cheaper, to install solar panels. Keep in mind that a standard residential solar panel is roughly five and a half feet tall by three feet wide. Pictured below, this 290 to 320 watt solar ...



Contact Us

For catalog requests, pricing, or partnerships, please visit:
<https://ssab-proiect.eu>