

## European Solar and Energy Storage Solutions

# Longi Green Leaf 435 photovoltaic panel



## Overview

---

What are the different types of LONGi Solar panels?

The current models are the Hi-MO 4 and Hi-MO 5 series, with the new advanced Hi-MO 6 panels due to be released in early 2023. LONGi's Hi-MO 5m panels are designed for residential rooftop solar systems while the larger format Hi-MO 5 panels are for commercial and utility-scale installations.

What is the maximum system voltage for Longi modules?

(LONGi modules maximum system voltage is DC1000 V/DC1500 V---actually system voltage is designed based on the selected module and inverter model) The correction value of VOC can be calculated by the following formula. T: The expected lowest temperature of the installation site.

Can a third party grounding device be used for a Longi module?

Mounting holes on modules that are not occupied can be used for installing grounding devices. The third party grounding device can be used for grounding of LONGi modules but such grounding method shall be proved to be reliable.

Should Longi modules have the same orientation and tilt angle?

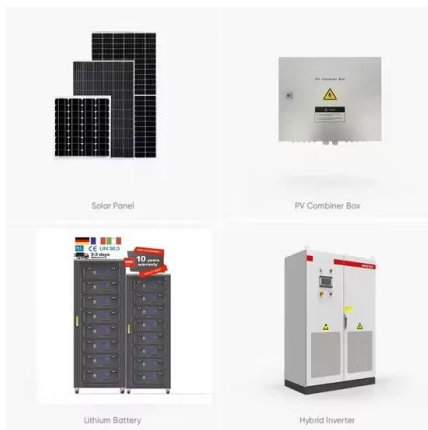
LONGi modules connected in string should be installed with the same orientation and tilt angle. Different module orientation and tilt angle may result in different levels of solar irradiation and also power generation.

What is the fire rating of Longi bifacial modules?

Please refer to local laws and regulations before installing modules and abide by requirements on building fire protection. According to the corresponding certification standards, the fire rating of LONGi Mono-facial modules is UL Type 1 or 2 or IEC Class C, the fire rating of LONGi bifacial modules is UL Type 29 or IEC Class C.



water sealing and high-purity POE film, consistently stable performance.



## LONGi 400W Solar Panel 108 Cells LR5-54HABB ...

A substantial 25-year product warranty is also included with this 400 W LONGi solar panel. Certified for the most extreme environmental conditions. PID, salt, acid and ammonia cannot harm LR5-54HABB-400M. Furthermore, it has a ...

## Longi HiMo6 HTH 435W Black White Mono

Black white panel with 22.3% efficiency, 15 year product warranty and 25 year linear power output warranty. The innovative Solshare unlocks solar power for flats across the UK. Mounting Fastensol pitched. Cost-effective and easy-to-fit ...



## Contact Us

For catalog requests, pricing, or partnerships, please visit:  
<https://ssab-proiect.eu>