

European Solar and Energy Storage Solutions

Maldives m solar 400 spec sheet



Maldives m solar 400 spec sheet

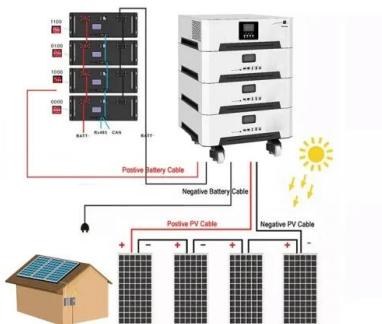


Solar Catalogs, Specs & Manuals , Panasonic North America

EVERVOLT® HK2 Black Series Solar Module 430/420-Watt Data Sheet. EVERVOLT® HK Black Series Solar Module 410/400-Watt Data Sheet. EVERVOLT® H Series Solar Module 410/400-Watt Data Sheet. EVERVOLT® H Series Solar Module 390-Watt Data Sheet. EVERVOLT® PK Black Series Solar Module 370/360-Watt Data Sheet. EVERVOLT® Solar Module 380/370 ...

Spec Sheets for U-Series Panels? : r/SunPower

Edit: Slight clarification that I discovered today, if you go with the Sunpower Lease or PPA Agreement, you will get a rebranded Canadian Solar Panel . If you go for a purchase you will get the rebranded Waaree panel. SunPower is calling them: SPR-U-400-BLK-W for the Waaree panels. SPR-U-400-BLK-C for the Canadian Solar panels.



108BB 400W HC Series

390 395 400 405 Current-Voltage Curve Current-Voltage Curve NUSA108H-405MB Electrical Characteristics 410 Irradiance of 1000W/m,AM1.5,cell Temperature 25 C *Remark: Electrical data in this catalog do not refer to a single module and they are not part of the offer.They only serve for comparison among different module types. Maximum Power (Pmax)[W]

PS-M108(HCBF)-xxxW 400-410W 2MY23

400 W 13.55 12.92 37.15 31.00 20.5% 405 W
13.59 12.96 37.34 31.27 20.8% Values at
Standard Test Conditions STC (Air Mass AM 1.5,
Irradiance 1000 W/m², Cell Temperature 25o C).
PHYSICAL CHARACTERISTICS Module Dimensions
(mm) 1721±1 x 1133±1 x 30 Module Weight (kg)
Modules per Pallet Max Static load (Front) Max
Static load (Back) Dynamic load



Datasheets & Warranty

Download Mission Solar Energy's technical data sheets and product specifications. Find information about our high-performance solar modules. Skip to main content. facebook; linkedin; instagram; NEWSLETTER SIGN UP; 5:00 p.m. Corporate Office. 8303 S. New Braunfels Ave. San Antonio, Texas 78235. Contact Us

mSolar 400 Watt All Black Mono Perc Solar Panel

mSolar > 400 Watt All Black Mono Perc Solar Panel - 35mm Frame - Pallet Quantity - 31 Solar Panels. Black 35mm Frame, Black Backsheet, 108 Half-Cell, 10 BusBar Mono Solar Panel M Solar modules are guaranteed to retain at least 84.3% of the initial power output Appealing Aesthetics Fully black module creates a sleek, uniform array



108 CELLS 400-420W

PHONO SOLAR TECHNOLOGY CO., LTD. reserves the right to make necessary adjustments to the information described herein at any time without



further notice. The specifications and certificates contained in this datasheet may deviate slightly from our actual products due to the on-going innovation and product enhancement.

mSolar 108BB 400W

Power (measured in watts) and efficiency (how well panels convert sunlight to electricity) are some of the most common metrics used to compare solar panel products. While they are not the only means of comparison, they are important determinants in how much electricity you can produce with a solar panel system.



SS-M-390 to 400 Series

The company manufactures solar modules in compliance with global standard including IEC 61215, 61730-1, 61730-2, 61701, UL 1703, UL 61730. Back Cover 80% at 25 Year(Black Color) Composite Sheet Frame (Black Color) Anodized Aluminum Alloy Fuse Rating 25 Module Drawing IV Curve SS-M-390 to 400 Series .

108BB 400W HC Series

M Solar modules are guaranteed to retain . at least 84.3% of the initial power output. Appealing Aesthetics. Fully black module creates a sleek, uniform array. PID 25 15121525 100% M SOLAR STANDARD INDUSTRY STANDARD 80% 90% 86% 98% 25/ 25 25-year product warranty, 25-year output warranty. 0.5% annual degradation . over 25 years. 84.8%+ of the





400 watt ZNShine Mono All-Black Solar Panel

The ZXM7-SH108-400/M premium solar panel operates at 20.46% efficiency to maximize the light absorption area. This solar panel is recommended for residential installations. Make your own power with this low priced solar panel.

MONOCRYSTALLINE SOLAR MODULES

MONOCRYSTALLINE SOLAR MODULES Key Features Sleek design and durable frame, the Solar Power Supply 400 Watt Monocrystalline Solar Panel provides you with the highest efficiency per area and is the perfect item for off-grid applications that include 12 and 24 volts arrays. ? High module conversion efficiency.



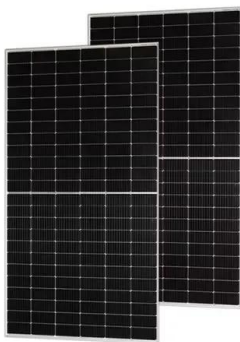
ZNSHINE ZXM6-HLDD144-400/M (400W) Solar Panel

Spec sheet/data sheet for the ZNSHINE ZXM6-HLDD144-400/M (400W) solar panel. Features; Pricing; Login; This page contains information about the ZNSHINE ZXM6-HLDD144-400/M (400W) solar panel. To compare this to other PV modules, ...

RELIABLE ENERGY. DIRECT FROM THE SOURCE.

SIL-400 HC+ SILFABSOLAR RELIABLE ENERGY. DIRECT FROM THE SOURCE. Designed to outperform. Dependable, durable, high-performance solar panels engineered for North

American homeowners. ELECTRICAL
 SPECIFICATIONS 400 Test Conditions STC NOCT
 Module Power (Pmax) Wp 400 298 Maximum
 power voltage (Vpmax) V 36.05 33.50 Maximum
 ...



72 Cell Mono 385 400W

Solar Cell Monocrystalline 6.25 x 6.25 inch, 72 (6 x 12) pcs. in series Glass High transparency, low iron, AR coated tempered glass 3.2 mm (0.13 inch) Frame Anodized aluminum alloy Junction Box Output Cable 4 mm² (EU)/12 AWG (US), 47.25 inch Connector MC4 compatible Dimension 78.27 x 39.53 x 1.38 inch Weight 51.81 lb Maximum Ratings

VSUN VSUN 400

All you need to know about the VSUN 400 solar panel including rating, cost, efficiency, and warranty terms. Open navigation menu Monocrystalline solar cell technology for enhanced efficiency Materials Warranty Term. 12 years. Warranty. 25 years. Spec Sheet. Download Easily find out what solar panels cost in your area ZIP code



SEG-(400-415)-BMD-Full Black-HV 182 EN

SEG Solar is a leading manufacturer of high-performance solar panels for residential, commercial, and utility applications. and utility applications. help customers reduce their energy costs and carbon footprint. Download Datasheet 400-415Wp Module Power Output 21.25% Max



Efficiency Series Half-Cell Monofacial Module Specifications

108BB 400W HC Series

390 395 400 405 Current-Voltage Curve
 NUSA108H-405MB Current-Voltage Curve
 Electrical Characteristics 410 Irradiance of
 1000W/m, AM1.5, cell Temperature 25 C *Remark:
 Electrical data in this catalog do not refer to a
 single module and they are not part of the
 offer. They only serve for comparison among
 different module types. Maximum Power
 (Pmax)[W]



Q.PEAK DUO BLK ML-G10+ SERIES

M E R TOP BRAND PV MODULES USA 2022 ~ See
 data sheet on rear for further information. ? APT
 test conditions according to IEC 61215
 62804-1:2015, method A (-1500V, 96h) The
 ideal solution for: Rooftop arrays on residential
 buildings Qcells is the first solar module
 manufacturer to pass the most comprehensive
 quality programme in the

Contact Us

For catalog requests, pricing, or partnerships, please visit:
<https://ssab-proiect.eu>