

European Solar and Energy Storage Solutions

Pallet photovoltaic panel installation specifications



Overview

This Installation Manual contains essential information for electrical and mechanical installation that you must know before handling, installing JA Solar Modules. This Manual also contains safety.

This Installation Manual contains essential information for electrical and mechanical installation that you must know before handling, installing JA Solar Modules. This Manual also contains safety.

Installation and User Manual. This manual applies to photovoltaic modules (“PV modules”, also commonly known as solar panels) manufactured by Yingli Energy Development Company Limited (“Yingli Solar”), and is explicitly written for qualified professionals (“Installer” or “Installers”), including without limitation licensed .

This Installation Manual contains essential information for electrical and mechanical installation that you should know before handling, installing JA Solar Modules. This Manual also contains safety information you need to be.

When unpacking and staging, place pallets in a flat, open and dry location. While unpacking, position pallets next to a solid, self-stand-ing support structure. Do NOT support the pallet with sharp objects or loose materials. Review the Installation Manual for LONGi Solar PV Modules before you begin installation.

3 MECHANICAL / ELECTRICAL SPECIFICATIONS Module electrical ratings are measured under Standard Test Conditions (STC) of 1000 W/m² irradiance, with an AM1.5 spectrum, and a cell temperature of 25°C. Detailed electrical and mechanical characteristics of Canadian Solar crystalline silicon PV modules can be found in datasheets and on What is included in the Yingli Solar PV module manual?

This manual contains important information pertaining to the electrical and mechanical installation and maintenance of PV modules, and contains safety information that you must read carefully and be familiar with before handling, installing, and/or maintaining Yingli Solar PV modules.

Which materials should be used to install photovoltaic modules?

JA Solar recommends that when installing modules at the seaside, stainless steel or aluminum materials should be used to contact the photovoltaic modules, and the installation parts should be well protected from corrosion. The tilt angle of the modules is measured between the surface of the modules and a horizontal ground surface.

What is the electrical rating of a crystalline silicon PV module?

Module electrical ratings are measured under Standard Test Conditions (STC) of 1000 W/m² irradiance, with an AM1.5 spectrum, and a cell temperature of 25°C. Detailed electrical and mechanical characteristics of Canadian Solar crystalline silicon PV modules can be found in datasheets and on .

Do you need a professional to install a PV module?

The installation and handling of PV modules require professional skills and should only be performed by qualified professionals. Installers must inform end-users (consumers) of the aforesaid information accordingly. The word “module” or “PV module” used in this manual refers to one or more Canadian Solar modules.

How do I install a solar photovoltaic system?

Installing solar photovoltaic systems requires specialized skills and knowledge. Installation should only be performed by qualified personnel. Before installing a solar photovoltaic system, installers should familiarize themselves with its mechanical and electrical requirements.

Where can I find electrical characteristics of Canadian Solar crystalline silicon PV modules?

Detailed electrical and mechanical characteristics of Canadian Solar crystalline silicon PV modules can be found in Annex A (Module Specifications) on Main electrical characteristics at STC are also stated on each module label. Please refer to the datasheet or the product nameplate for the maximum system voltage.

Pallet photovoltaic panel installation specifications



Deye Official Store

10 years
warranty

Astronergy CHSM6612M-360w Mono Solar Panel ...

Astronergy, 360W Mono Solar Panel Pallet, Qty. 27, 40mm Silver Frame with White Backsheet, 72 Cells. CHSM6612M-360. Specifications: Astronergy Installation Guide: Installation Guide: Warranty: 10 Year Limited Product ...

PV Module Unpacking, Handling and Storing Guide

Recommended forklift specifications: 1. Stage pallets on a flat, open and dry location. 2. Position pallets next to a solid, self-standing support structure (e.g., tracker post, wall, another pallet) to ...

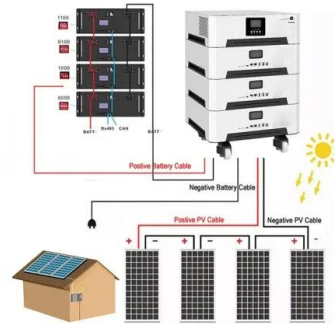


550W MONO PERC SOLAR PANEL FULL PALLET (32 PANELS)

AFFORDABLE Sustainability: USED Solar Panels by PALLET

Welcome to Solar Panel Guru, the ultimate destination for all things solar panel-related. In today's article, we dive into the world of used solar panels by the pallet. Discover how cost-effective ...

Corrosion-resistant aluminum frame for extended outdoor use. Suitable for Caravan, RV, Golf car, Electric car, Yacht, Boat, Tent or backpack etc. ? High modules conversion efficiency. Grade ...



Standard Solar Panel Sizes And Wattages (100W-500W Dimensions)

That's basically a 66×39 solar panel. But what is the wattage? That is unfortunately not listed at all. 72-cell solar panel size. The dimensions of 72-cell solar panels are as follows: 77 inches ...

2pcs 550 Watt Monocrystalline Solar Panel

This Renogy 550W Monocrystalline Solar Panel maximizes power output while minimizing installation space and system equipment costs, primarily used for utility-scale systems, solar power plants, residential and ...



Contact Us

For catalog requests, pricing, or partnerships, please visit:
<https://ssab-proiect.eu>