

## European Solar and Energy Storage Solutions

# Photovoltaic bracket calculation formula table

Our Lifepo4 batteries can be connected in parallels and in series for larger capacity and voltage.



## Overview

---

How do you calculate the number of photovoltaic modules?

Multiplying the number of modules required per string (C10) by the number of strings in parallel (C11) determines the number of modules to be purchased. The rated module output in watts as stated by the manufacturer. Photovoltaic modules are usually priced in terms of the rated module output (\$/watt).

How do you calculate the energy output of a photovoltaic array?

The amount of energy produced by the array per day during the worst month is determined by multiplying the selected photovoltaic power output at STC (C5) by the peak sun hours at design tilt. Multiplying the de-rating factor (DF) by the energy output module (C7) establishes an average energy output from one module.

How do you calculate the cost of a photovoltaic array?

Photovoltaic modules are usually priced in terms of the rated module output (\$/watt). Multiplying the number of modules to be purchased (C12) by the nominal rated module output (C13) determines the nominal rated array output. This number will be used to determine the cost of the photovoltaic array.

How does Sam calculate a photovoltaic performance model?

SAM's photovoltaic performance model calculates the hourly AC output of the photovoltaic system. It then adds up these 8,760 hourly values to calculate the system's total AC output in one year. This value is treated as the system's total output in the first year of the system's operation.

What is the basic unit of a photovoltaic system?

The basic unit of a photovoltaic system is the photovoltaic cell. Photovoltaic (PV) cells are made of at least two layers of semiconducting material, usually silicon, doped with special additives. One layer has a positive charge, the

other negative. Light falling on the cell creates an electric field across the layers, causing electricity to flow.

How to calculate total current from PV array?

The total current from PV array is calculated by the number of modules or strings in parallel, multiplied by the module current. It is better to use the short-circuit current ( $I_{sc}$ ) instead of the maximum power current ( $I_{MP}$ ) so that the shunt type controllers which operate the array at short-circuit current conditions are safe.

## Photovoltaic bracket calculation formula table

---

### 12.8V 100Ah

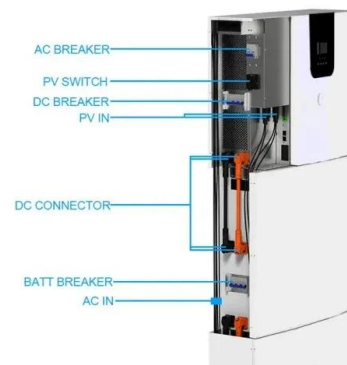


### Structure design and analysis of integrated photovoltaic power ...

Under three typical working conditions, the maximum stress of the PV bracket was 103.93 MPa, and the safety factor was 2.98, which met the strength requirements; the hinge joint of 2 rows ...

### New bracket and motion control system for distributed photovoltaic ...

In view of the existing solar panel blackout, affecting the ecological environment, unreasonable spatial distribution, low power generation efficiency, high failure rate, difficult to ...



### How to calculate value based on tax bracket using ...

I want to calculate the tax on the amount based on tax bracket applied to it in Google sheet. Here is the screenshot of the tax bracket: So if the amount is \$17000, then 10.5% tax is applied on first \$14000 and 17.50% tax ...

### Calculating Solar PV String Size - A Step-By-Step Guide

One aspect of designing a solar PV system that is often confusing, is calculating how many solar panels you can connect in series per string. Or if your calculator doesn't have a % sign. 40V ...



Test certification  
CE FC

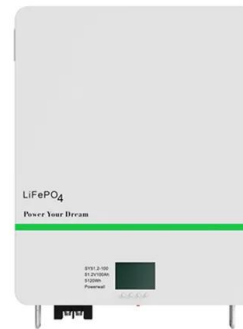


## Optimal design and cost analysis of single-axis tracking photovoltaic ...

Obviously, dual-axis tracker systems show the best results. In [2], solar resources were analysed for all types of tracking systems at 39 sites in the northern hemisphere covering ...

## Present value formula and PV calculator in Excel

Assuming the payments are made at the end of each year, you can calculate the present value with this formula: =PV(B2, B3, B4) As shown in the image below, the PV formula returns the same result as the manual ...

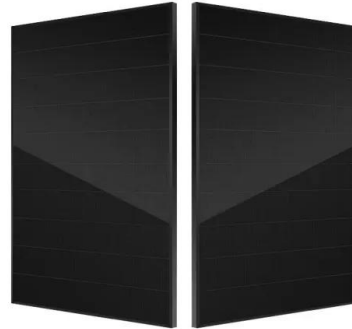


## How to calculate value based on tax bracket using Google sheet formula ...

I want to calculate the tax on the amount based on tax bracket applied to it in Google sheet. Here is the screenshot of the tax bracket: So if the amount is \$17000, then ...

## Calculations for a Grid-Connected Solar Energy System

Table 1 displays the four locations in Arizona. This value is used in system sizing calculation. Derate Factors. Each system has efficiency losses. High ambient temperature . can result in ...



## A simple formula for estimating the optimum tilt angles of photovoltaic ...

This paper presents a new approach to computing the optimal tilt angle for photovoltaic (PV) panels. The influence of cloudy conditions on the tilt angle is explored. It is demonstrated that ...



## Calculation & Design of Solar Photovoltaic Modules & Array

When we connect N-number of solar cells in series then we get two terminals and the voltage across these two terminals is the sum of the voltages of the cells connected in series. For ...



## How to calculate the annual solar energy output of a photovoltaic ...

r is the yield of the solar panel given by the ratio : electrical power (in kWp) of one solar panel divided by the area of one panel. Example : the solar panel yield of a PV module of 250 Wp ...



## Contact Us

---

For catalog requests, pricing, or partnerships, please visit:  
<https://ssab-proiect.eu>