

## European Solar and Energy Storage Solutions

# Photovoltaic bracket weight per square meter



## Overview

---

The wattages of solar panels can range greatly. While some solar panels power select appliances or RVs, others are powerhouses, and others can power industrial buildings. These solar panels differ in both size and weight. On average, a solar panel can provide 15 watts per square foot. Let's start by breaking down the.

Here are some quick facts about the average weight of solar panels with differing wattages: 1. 100-watt solar panels from 5 of the most popular brands average 18.8 pounds. 2.

The roofs of current homes can safely support about 20 pounds per square foot. Including the mounting equipment, residential solar panels weigh about 3 to 4 pounds per square foot. Even after a snowstorm, your roof is.

Most modern rooftops have a rafter load of 140kg per square metre. For reference, solar panels usually weigh approximately 20kg per square metre.

Most modern rooftops have a rafter load of 140kg per square metre. For reference, solar panels usually weigh approximately 20kg per square metre.

60-cell solar panels that are 20 kilograms and measure 1.68 meters long by 1.01 meters wide have an area of 1.70 meters squared. Thus, they weigh 11.76 kilograms per square meter. 72-cell solar panels that are 28 kilograms and measure 2.03 meters long by 1.01 meters wide have an area of 2.05 square meters.

On average, solar panels weigh between 10 and 20 pounds per square meter. For a sound roof, this weight won't threaten the roof's stability under the panels. The weight doesn't spread evenly across the surface of your solar panel.

Solar panel sizes and wattage range from 250W to 450W, taking up 1.6 to 2 square metres per panel. One of the most important things to consider when getting solar panels for your home is the specific solar panel size and dimensions .

Solar panel weight varies by manufacturer, but standard 60 cell solar panels

weigh about 40 pounds. Commercial solar panels weigh around 50 pounds.

## Photovoltaic bracket weight per square meter

---



### All the different options for fixing PV Panels

The problem is they can cost a lot more per square meter and aren't as efficient per square meter as standard panels. is when solar panels are fixed on top of the roof covering. Solar Installers remove tiles temporarily and fix brackets to ...

### Photovoltaic module and solar mounting bracket installation engineering

When the long side of the component is perpendicular to the keel, the cost of the bracket is saved. Reserve the width of the wireway during installation. 3, color steel roof ...



### How Much Power Do Solar Panels Produce Per Square Meter?

The average solar panel has an input rate of roughly 1000 Watts per square meter, while the majority of solar panels on the market have an input rate of around 15-20 percent. As a result, ...

### the promise of organic solar panels

The standard solar panels we see on homes and businesses are made from crystalline silicon. These rigid photovoltaic (PV) panels convert light into electricity. They weigh 20 to 30 kilograms per square metre and so ...

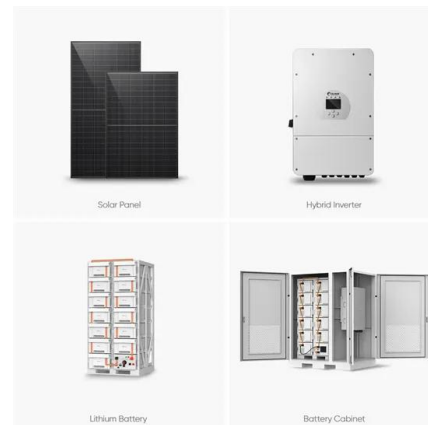


## How much do solar panels weigh? A complete guide to ...

In terms of weight per area, the average weight/area of a residential solar panel is around 2.25 pounds per square foot (24.3lbs/m<sup>2</sup> or 11Kg/m<sup>2</sup>). Please note that the overall weight of a solar energy system also ...

## How big are solar panels? Solar panel size and weight

Solar panel size varies from brand to brand, but you can expect your residential panels to measure around 5.5 feet by 3 feet and weigh about 40 to 50 pounds. Commercial solar panels tend to be about a foot longer than ...



## Understanding Solar Irradiance: Measurement, Calculation, and PV

Solar irradiance is generally measured in watts per square meter (W/m<sup>2</sup>). This unit of measurement allows for a clear understanding of how much solar power is being received per ...

## Understanding Solar Irradiance: Measurement, ...

Solar irradiance is generally measured in watts per square meter ( $W/m^2$ ). This unit of measurement allows for a clear understanding of how much solar power is being received per square meter of a given surface area. The higher the ...

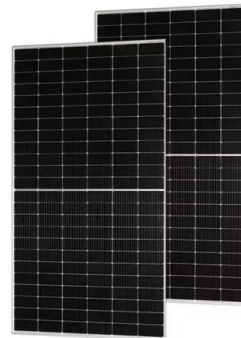


## PV Bracket, Solar Clamp, Aluminium Frame, China Manufacturer

The factory is divided into extrusion aluminum manufacturing and photovoltaic bracket, solar energy frame finishing products. Three factories manufacturing solar products covering a total ...

## Solar Panel Size and Weight: What You Need to Know

On average, most residential solar panels weigh between 33 to 50 pounds each, translating to about 3 pounds per square foot. Additionally, larger commercial or utility-scale panels can weigh even more, often ranging ...



## How Much Do Solar Panels Weigh?

On average, solar panels weigh between 10 and 20 pounds per square meter. For a sound roof, this weight won't threaten the roof's stability under the panels. The weight doesn't spread evenly across the surface of your ...



## Solar Energy Per Square Meter

Solar Energy Per Square Meter. Solar energy per square meter, or "watts per square meter" ( $W/m^2$ ), is a measure of the amount of solar energy that is received per unit area on a surface. It is used to determine the amount ...



## Solar PV Rooftop , Solartron

Roofing sheet type And the approximate weight per square meter ; After that, consult a structural engineer. In order to see how much the roof can be loaded, it can be said that solar cells can be installed.? PV Solar Panel According to ...

## Photovoltaic (PV) Module Technologies: 2020 Benchmark

...

In 2016, the U.S. Department of Energy's Solar Energy Technologies Office set a goal to reduce the unsubsidized levelized cost of electricity (LCOE) of utility-scale photovoltaics (PV) to 3 ...



## Contact Us

---

For catalog requests, pricing, or partnerships, please visit:  
<https://ssab-proiect.eu>