

European Solar and Energy Storage Solutions

Photovoltaic panel cement column casting method



Overview

Can a precast concrete facade be integrated with photovoltaic?

Influence of some key parameters on the performance of precast concrete facade integrated with photovoltaic is analyzed. This paper proposes a novel approach to integrate photovoltaic (PV) panel into a precast concrete (PC) facade renamed PVPC facade, as a special application for prefabricated high-rising buildings.

How is a ground mounted PV solar panel Foundation designed?

This case study focuses on the design of a ground mounted PV solar panel foundation using the engineering software program spMats. The selected solar panel is known as Top-of-Pole Mount (TPM), where it is designed to install quickly and provide a secure mounting structure for PV modules on a single pole.

Does a ground-mounted photovoltaic power plant have a fixed tilt angle?

A ground-mounted photovoltaic power plant comprises a large number of components such as: photovoltaic modules, mounting systems, inverters, power transformer. Therefore its optimization may have different approaches. In this paper, the mounting system with a fixed tilt angle has been studied.

How to optimize a photovoltaic plant?

The optimization process is considered to maximize the amount of energy absorbed by the photovoltaic plant using a packing algorithm (in Mathematica™ software). This packing algorithm calculates the shading between photovoltaic modules. This methodology can be applied to any photovoltaic plant.

Can a concrete foundation be used for a solar array?

Concrete foundations. Repurposed brownfield sites, capped landfills, and designated wetland sites are ideal for ground-mounted solar arrays, but they

require foundation designs to be minimally invasive. These kinds of sites can use concrete foundation racking systems that do not disturb the ground underneath.

How to choose suitable locations for photovoltaic (P V) plants?

The selection of the most suitable locations for photovoltaic (P V) plants is a prior aim for the sector companies. Geographic information system (G I S) is a framework used for analysing the possibility of P V plants installation . With G I S tools the potential of solar power and the suitable locations for P V plants can be estimated.

Photovoltaic panel cement column casting method



Investigation of column-to-base connections of pole-mounted solar panel ...

Table 1, Table 2 present the details of the specimens with and without separate base plates, respectively, including the specimen names, connecting methods, dimensions ...



Categories of typical ground mount solar foundations.

In addition, foundations to support the trackers on the ground generally consist of steel piles, concrete piles, precast concrete piles, cast-in-place piles, driven piles, and helical piles [25



- LIQUID/AIR COOLING
- ON GRID/HYBRID
- PROTECTION IP54/IP55
- BATTERY /6000 CYCLES

Method Statement for Precast Concrete Fabrication and Installation

The complete template of the Method Statement for Precast Concrete Fabrication and Installation along with the related attachments can be downloaded here. Scope of Method Statement for ...

A Review on Solar Panel Cleaning Through Chemical Self-cleaning Method

Photovoltaic (PV) panels installation in the dusty regions results in the reduction of its power output because the soil deposition on it resists the conversion of light into power.

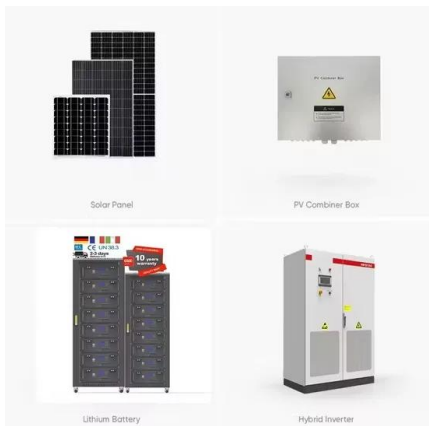


Foundation Alternatives for Ground Mount Solar Panel ...

Overdrilled, Precast and Cast-In-Place and Backfilled Concrete Piers As an alternative to a traditional drilled pier foundation, in which the full size of the drilled hole is filled with

Introduction to ground mounted solar PV installation

Cast / Ballasted Concrete. Ground mount system GTS on a concrete foundation by Solaracks. When soil conditions are not right for making any penetration to the ground (rock, for example) then the best choice is to opt for a ballasted footing ...



A Review of Dust Deposition Mechanism and Self-Cleaning Methods ...

The components of a solar panel [16]. These structures will further promote the formation of cement [73]. Under the influence . The technology used is the spray casting ...

How To Anchor Ground-Mounted Solar Arrays

The drilled shaft or borehole is filled with high-strength cement grout or concrete. At times, steel casing or re-bar is used for reinforcement. Typically 'straight' shafts are drilled to the specified depth, but when ...



Solar Panel Mounting Systems and Their ...

Mounting systems are essential for the appropriate design and function of a solar photovoltaic system. They provide the structural support needed to sustain solar panels at the optimum tilt, and can even affect the ...

Solar mounting structure construction methods -- RatedPower

concrete pads as a ballast, and allows for system installation without digging, boring, or geotechnical testing. The PvMax is ideal for small to mid-size installations and on terrains with ...

DETAILS AND PACKAGING



Foundation Alternatives for Ground Mount Solar Panel ...

several groups based largely on the method of installation: 1. Direct Drilled Concrete Piers 2. Excavated and Backfilled Precast Concrete Piers 3. Excavated and Backfilled Cast-in-Place ...



Design and Analysis of Steel Support Structures Used in ...

photovoltaic (PV) solar power plant projects, PV solar panel (SP) support structure is one of the main elements and limited numerical studies exist on PVSP ground mounting steel frames to ...

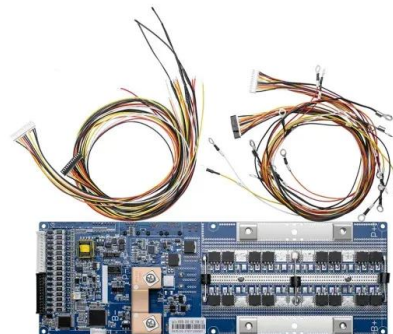


Removal of Hardened Cement Deposited on PV Panels ...

Hardened cement on solar panel. At the site there is construction of 5 storey building. The building is on West side of solar plant and about 7 meter be applied or it will crack solar panel. The ...

What is the best foundation for a ground-mount solar ...

Ground-mounted arrays penetrate the ground-surface to stabilize the rack structure and have a variety of foundation types. Soil composition, local climate conditions, module size, array tilt and other features ...





White Paper: Foundation Selection For Ground ...

Foundation selection is critical for a cost effective installation of PV solar panel support structures. Lack of proper investigation of subsurface conditions can lead to selection of the wrong foundation type and can result in ...

Contact Us

For catalog requests, pricing, or partnerships, please visit:
<https://ssab-proiect.eu>