

## European Solar and Energy Storage Solutions

# Photovoltaic panel ground measurement



## Overview

---

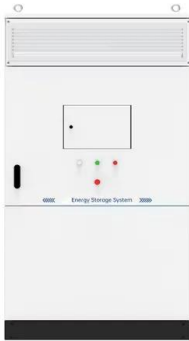
Check the PV system for ground faults by measuring the voltage. If the voltage measurement was not successful, check the PV system via insulation resistance measurement for ground faults.

Check the PV system for ground faults by measuring the voltage. If the voltage measurement was not successful, check the PV system via insulation resistance measurement for ground faults.

Disconnect the DC switch of each PV string connected to the inverter, and use a multi-meter to measure the voltage of the PV+ to ground and PV- to ground of each string.

## Photovoltaic panel ground measurement

---



### Recommended Tools for 15 Measurements in Solar Installation ...

In addition to a normal insulation resistance measurement mode, the PV insulation resistance function lets you measure PV's insulation during the day safely without short-circuiting. The ...

### How to find and repair ground faults in solar PV systems

A clear, consistent approach to finding and diagnosing such faults can help you repair them reliably and efficiently whenever they occur. Learn to identify and correct ground faults in solar PV arrays using various tools and methods for ...



### Analysis of mechanical stress and structural deformation on a solar

The solar panel which is located in the ground level, shows that the calculation of the wind loads will be an easier job compare to the panels which are being installed in the roof ...

### Insulation Resistance Measurement for the Safety of

...

Perform the insulation measurement in PV mode in just 4 seconds. Equipped with an open-circuit voltage measurement function and a polarity determination function. These are useful for polarity testing during PV system installation. A ...

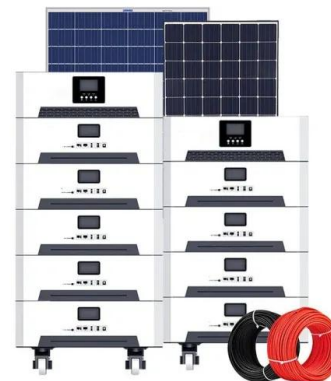


## Basic Understanding of IEC Standard Testing For ...

The performance PV standards described in this article, namely IEC 61215 (Ed. 2 - 2005) and IEC 61646 (Ed. 2 - 2008), set specific test sequences, conditions and requirements for the design ...

## Photovoltaic Module Grounding: Issues and Recommendations

Address two key issues: There are a limited numbers of approved (listed) grounding methods, despite a wide variety of installation methods for grounding module frames. Lack of confidence ...



## How to Test Solar Panels: Output, Amps & Watts

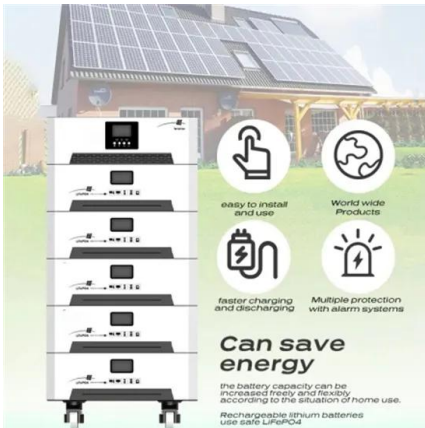
Step 2: Measure the Solar Panel's Current. Open the jaws of the clamp meter, place one of the solar panel's wires inside, and close the jaws. The solar panel's current reading will show on the display. Remember this ...



51.2V  
200Ah/300Ah  
LiFePO4 battery

## Solar Panel kWh Calculator: kWh Production Per Day, ...

Big solar panel system: 1kW, 4kW, 5kW, 10kW system. These include several solar panels connected together in a system (2 - 50 solar panels). Example: You can get a Renogy 100W 12V with 30A charge controller and a simple ...



## 59 Solar PV Power Calculations With Examples Provided

$A_t$  = Total area of ground where panels are installed ( $m^2$ ) If your panels total  $200m^2$  and they're installed over  $500m^2$  of land:  $GCR = 200 / 500 = 0.4$  or 40% 45. Temperature Coefficient ...

## Fluke SMFT-1000 Multifunction PV Tester Performance Analyzer

The app features an extensive solar panel database that allows for importing panel specifications directly into the analyzer, allowing access to over 120,000 different types of PV panels ...





## Analysis of mechanical stress and structural deformation on a ...

In this project, a solar panel array mounted at the ground plane is subject to wind speeds for 5m/s and 25 m/s to investigate pressure effect on each panel in the array where the ...

## Measurement of Solar Irradiance for Determining the ...

...

We installed these panels in four angles at 0°, 15°, 30°, 45°, and fixed solar panel all the month of the year and fixed in august especially to study the daily solar radiation in summer .The



## Determining Module Inter-Row Spacing , Greentech Renewables

There are a few ways to consider this but generally, you'll want to figure the "panel width" as the true measurement of the panel when oriented to the mounting azimuth and then measured ...

## Insulation Resistance Measurement for the Safety of Solar PV

Perform the insulation measurement in PV mode in just 4 seconds. Equipped with an open-circuit voltage measurement function and a polarity determination function. These are useful for ...



## PV System Ground Fault Troubleshooting , Fluke

Measure positive to ground and negative to ground. If there is no ground fault there should be 0 volts to ground from either conductor. If voltage to ground exists from either conductor, check each connection point (DC disconnect, combiner ...

## Field Guide for Testing Existing Photovoltaic Systems for ...

reasons for fires in photovoltaic (PV) arrays; methods are available that can mitigate the hazards. This report provides field procedures for testing PV arrays for ground faults, and for ...



Lower cost  
larger system

20Kwh

30Kwh



Verified Supplier



## Solar Panel Stand Design (My Full Guideline)

If you have the necessary carpentry or metalworking skills and are comfortable with DIY projects, building a solar panel stand can be a rewarding experience. Here's a general guide on how to construct a DIY ground ...

## Maintenance of solar PV systems according to the IEC

...

Voltage to Ground-Resistive Ground System:  
Measure the resistivity according to the technical documentation provided by PV module manufacturer. Loop Impedance Meter: Blocking diode test: This is required for the system using a

...



## Global Photovoltaic Power Potential by Country

The Global Solar Atlas provides a summary of solar power potential and solar resources globally. It is provided by the World Bank Group as a free service to governments, developers and the general public, and allows users to quickly ...

## Measurement of Solar Irradiance for Determining the Optimal Tilt ...

We installed these panels in four angles at 0°, 15°, 30°, 45°, and fixed solar panel all the month of the year and fixed in august especially to study the daily solar radiation ...



## Contact Us

---

For catalog requests, pricing, or partnerships, please visit:  
<https://ssab-proiect.eu>