

European Solar and Energy Storage Solutions

Photovoltaic panel model parameter meaning table



 **LFP 48V 100Ah**



Overview

How to obtain a five parameters model of photovoltaic modules?

An efficient analytical approach for obtaining a five parameters model of photovoltaic modules using only reference data Parameter extraction of solar cell models using repaired adaptive differential evolution.

How to check the parameters of a photovoltaic cell?

An sample algorithm is used to check the inaccuracies occurred in the parameters identification of the photovoltaic cell. General Algebraic Modeling System is used to extract the best values of parameters of a PV cell and PV module. Tools are applied to check and extract parameters from single and double diode model.

What is the reference model for solar panel modeling?

Reference model for modeling In order to develop the modeling and carry out the simulation of a solar panel model, the JAP6-72-320/4BB solar PV module has been selected and depicted in Fig. 5. The module is consists of 72 polycrystalline silicon solar cells connected in series.

What is a solar PV module?

Mathematical formulation of solar PV module A solar cell is a fundamental device for conversion of photon energy into pollution-free electricity if this device is connected in series and parallel fashion than PV module is formed.

Why is modeling of solar PV module important?

Modeling of PV module shows good results in real metrological conditions. It is presumed as a sturdy package and helps to boost solar PV manufacturing sector. In renewable power generation, solar photovoltaic as clean and green energy technology plays a vital role to fulfill the power shortage of any country.

How to evaluate the performance of a photovoltaic panel?

To evaluate the performance of a photovoltaic panel, several parameters must be extracted from the photovoltaic. Among the methods developed to extract photovoltaic parameters from current-voltage (I-V) characteristic curve, metaheuristic algorithms are the most used nowadays.

Photovoltaic panel model parameter meaning table

Parameters of a Solar Cell and Characteristics of a PV Panel



Related Post: A Complete Guide About Solar Panel Installation. Step by Step Procedure with Calculation & Diagrams. Solar Cell Parameters. The conversion of sunlight into electricity is ...

Frontiers , Recent Photovoltaic Cell Parameter Identification

where N_s refers to the number of photovoltaic cells in the photovoltaic panel; q means the electron charge, and $q = 1.6 \times 10^{-19} \text{ C}$. Moreover, the advantages of SDM are ...



Solar Panel Specifications Explained , Electrical Academia

The most important solar panel specifications include the short-circuit current, the open-circuit voltage, the output voltage, current, and rated power at $1,000 \text{ W/m}^2$ solar radiation, all measured under STC.. Solar modules must also meet ...

Review on parameter estimation techniques of solar photovoltaic ...

The major limitation of PV based power generation is its limited availability and dependency on factors such solar insolation, temperature, tilt angle, and the materials used. 30 The primary ...

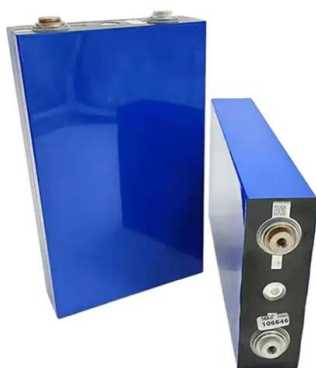


Seven-parameter PV model estimation using Differential Evolution ...

The electrical characteristics of PV panel can be represented by an equivalent electric circuit model. Major challenge lies in the accurate estimation of PV model parameters. ...

Superellipse model: An accurate and easy-to-fit empirical model ...

Then, in Section 5.3.2 the proposed empirical model are used to reconstruct the PV characteristic curves for 5 other PV panels with different materials as specified in Table 1. ...



Understand solar panel specification sheets and how to ...

A solar panel spec sheet provides valuable information about the operating parameters of a panel and can help designers, engineers, and installers determine how to configure a solar PV system. The panel spec sheet will tell ...

Review on parameter estimation techniques of solar

...

The major limitation of PV based power generation is its limited availability and dependency on factors such solar insolation, temperature, tilt angle, and the materials used. 30 The primary being insolation and temperature greatly ...



Contact Us

For catalog requests, pricing, or partnerships, please visit:
<https://ssab-proiect.eu>