

European Solar and Energy Storage Solutions

Photovoltaic panel shock absorber installation



Overview

How do I prevent electric shocks in a PV array?

The electric shock voltage will increase with the number of series connected modules. The use of insulated tools and gloves, together with insulating matting to stand or sit on, can mitigate this hazard. An electric shock may also be experienced due to the PV array developing a ground leakage path.

How do I install a solar photovoltaic system?

Installing solar photovoltaic systems requires specialized skills and knowledge. Installation should only be performed by qualified personnel. Before installing a solar photovoltaic system, installers should familiarize themselves with its mechanical and electrical requirements.

Can a PV array cause an electric shock?

An electric shock may also be experienced due to the PV array developing a ground leakage path. Good wiring practice, double insulation and modules of Class II construction can significantly reduce this problem, but in any installed systems, leakage paths may still occur.

Which direction should a photovoltaic module be installed?

When installing photovoltaic modules in the northern Hemisphere, the optimal installation direction of the module is to face south; When installing photovoltaic modules in the Southern Hemisphere, the optimal installation direction of the module is to face north. Serial connected PV modules should be installed in the same orientation and Angle.

Can a PV module be switched off?

PV modules produce electricity when exposed to daylight and individual modules cannot be switched off. Hence, unlike most other electrical installation work, the electrical installation of a PV system typically involves working on a live system. See requirements of Regulation 14 of Electricity at

Work Regulations 1989.

What is a roof mounted photovoltaic system guidance?

The guidance refers only to the mechanical installation of roof mounted integrated and stand-off photovoltaic systems; it provides best practice guidance on installation requirements and does not constitute fixing instructions.

Photovoltaic panel shock absorber installation

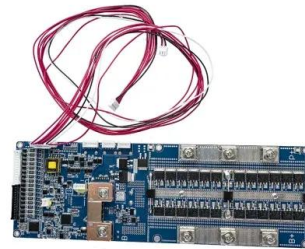


Manufacturer of PVT panels - PVT - Hybrid Photovoltaic Panels

It is a hybrid of normal PV panel complemented by thermal absorber. This unique combination is effectively cooling PV module to achieve always the best electrical performance. Of course, the ...

4 Common Hazards During Solar Installation

Solar installations require specific attention to multiple high-hazard conditions. Electrical hazards, during this type of work, could come in the form of either shock/electrocution from live equipment and utilities or it could come in the ...



Clause 10.2 Solar Photo-Voltaic (PV) Installation

Alternatively, the 3m vertical separation can be exempted if a 1-hr fire-rated horizontal projection that extends at least 600mm from the building is installed between the PV installation and the ...

IEC certifications: IEC 61215, IEC 61646 and more ...

Discover common IEC solar panel certifications.

PV Quality. PV Factory Audit. PV Module Quality Inspection. IEC 60364-4-41 is about protection against electric shock for low-voltage electrical depending on ...

GRADE A BATTERY

LiFePO4 battery will not burn when overcharged, over discharged, overcurrent or short circuited and can withstand high temperatures without decomposition.

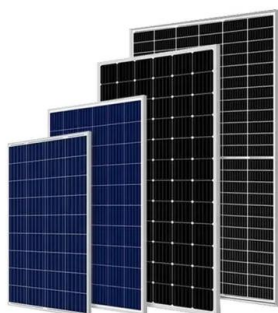


Global Installation Guide for Suntech Power Standard ...

Mechanical and electrical installation of photovoltaic modules should refer to the corresponding regulations, including electrical law, construction law and electrical connection requirements. ...

A Full Guide to Photovoltaic Panel Installation and Maintenance

A roof that is in poor condition or nearing the end of its lifespan might not be suitable for solar panel installation without repairs or replacement. Assess the roof's structural ...

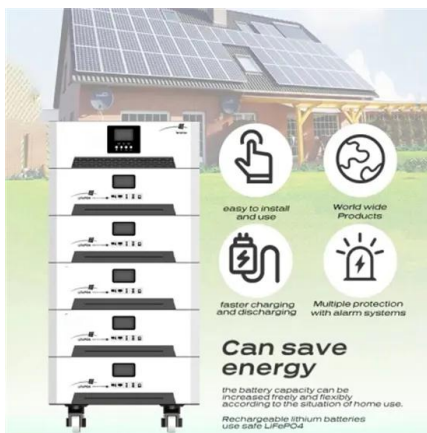


Solar system components: How to setup your pv system

MLPE technology enables a solar panel system to produce efficiently, even if one or a few panels are out of commission. If you use a microinverter solution, the inverters will be at the panel site. If you install a ...

Avoiding mistakes when installing shock absorbers -- these installation

Serious damage to the shock absorber can also occur if it is clamped in a vice. "This squeezing can damage the raceway of the working piston", knows Rainer Popiol. In ...



First Solar Series 6 Plus Plus and Series 6 Plus Plus Bifacial

plus table of contents 1 introduction 1 2 safety 2 3 regulatory compliance 4 4 product identification & ratings 5 4.1 product identification & ratings 5 4.2 wiring system derating factors 7 5 handling ...

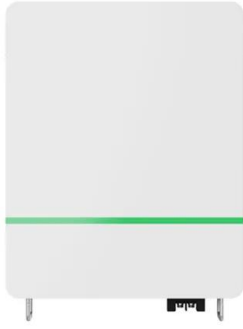
Global Installation Guide for Suntech Power Standard ...

This installation manual contains important electrical and mechanical installation information as well as safety information that you must be familiar with, providing important safety instructions ...



Stabilus Solar Dampers

Solar trackers play an important role in large photovoltaic power stations. But how can you tell if they're still being protected by their dampers long after installation? Stabilus offers even more than just damping technology - now also available ...



Contact Us

For catalog requests, pricing, or partnerships, please visit:
<https://ssab-proiect.eu>