

European Solar and Energy Storage Solutions

Photovoltaic panel status detection



Overview

How to detect photovoltaic panel faults?

Common analysis methods include equivalent circuit models, maximum power point tracking algorithms, etc. The principle of using the hybrid method to detect photovoltaic panel faults is to combine the advantages of intelligent method and analytical method, aiming to improve the accuracy and robustness of photovoltaic panel fault detection.

What is PV panel fault detection?

PV Panel Fault Detection PV panel fault detection is a technique that detects and diagnoses the failure of PV panels in solar PV systems. PV modules can suffer from common quality issues such as hot spots, cracks, and power degradation. These issues can impair the performance and lifespan of the components, and even pose safety risks [98].

Why is detection of photovoltaic panel overlays and faults important?

The detection of photovoltaic panel overlays and faults is crucial for enhancing the performance and durability of photovoltaic power generation systems. It can minimize energy losses, increase system reliability and lifetime, and lower maintenance costs.

What is the intelligent method of detecting photovoltaic panel faults?

The intelligent method of detecting photovoltaic panel faults uses artificial intelligence and machine learning technology, and uses a large amount of data to train algorithms to identify and locate photovoltaic panel faults.

What is PV panel overlay detection & fault detection?

PV panel overlay detection and PV panel fault detection are both directly related to the performance and efficiency of solar power generation systems. PV panel overlay detection aims to detect whether there are shelters or pollutants on the surface of PV panels.

Why is fault diagnosis important for photovoltaic systems?

The reliable performance and efficient fault diagnosis of photovoltaic (PV) systems are essential for optimizing energy generation, reducing downtime, and ensuring the longevity of PV installations.

Photovoltaic panel status detection



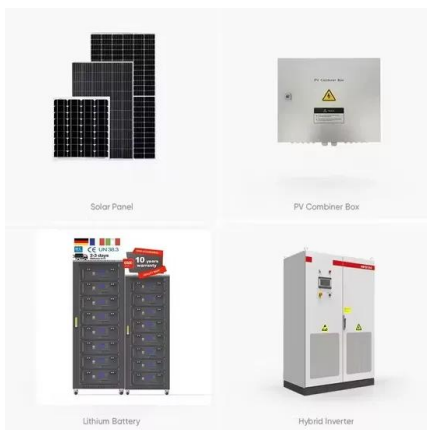
A technique for fault detection, identification and location in solar

Worldwide solar photovoltaic (PV) penetration is increasing rapidly due to the cost reduction of PV panels and beneficial governmental policies for consumers. Worldwide ...

Enhanced Fault Detection in Photovoltaic Panels Using CNN

...

3 ???· Solar photovoltaic systems have increasingly become essential for harvesting renewable energy. However, as these systems grow in prevalence, the issue of the end of life ...



An Intelligent Fault Detection Model for Fault ...

A recent article has provided a comprehensive study on several advanced fault detection approaches in PV systems. The study has divided fault detection approaches into model-based difference measurement (MBDM), real-time ...

Improving Solar Panel Efficiency: A CNN-Based System for Dust Detection ...

About 750 watts of solar power were placed in the solar panel (PV). Every season and time's RMSE is individually calculated. Using four alternative techniques, including ...



Photovoltaic Panel Defect Detection Based on Ghost ...

on PV panel defect detection and (2.2) the development of target detection based on the YOLO algorithm. 2.1. PV Panel Defect Detection With the progress in energy structures, photovoltaic ...

Google Earth Engine for the Detection of Soiling on ...

The soiling of solar panels from dry deposition affects the overall efficiency of power output from solar power plants. This study focuses on the detection and monitoring of sand deposition (wind-blown dust) on photovoltaic (PV) solar ...



Solar panel surface dirt detection and removal based on arduino ...

Many mechanisms have been adopted to bridge the gap between cleaning costs and the fair dirt condition for the efficiency of solar panels [14].Relatively, to determine whether ...



A Survey of Photovoltaic Panel Overlay and Fault ...

The first aspect is the detection of PV panel overlays, which are mainly caused by dust, snow, or shading. We classify the existing PV panel overlay detection methods into two categories, including image processing ...



RentadroneCL/Photovoltaic_Fault_Detector

Model Photovoltaic Fault Detector based in model detector YOLOv.3, this repository contains four detector model with their weights and the explanation of how to use these models. Model Panel Detection (SSD7) Model Panel ...

114KWh ESS



(PDF) Dust detection in solar panel using image

Dust detection in solar panel using image processing techniques: A review . Detección de polvo en el panel solar utilizando técnicas de procesamiento por imágenes: U na revisión .

12.8V 100Ah



Enhanced Fault Detection in Photovoltaic Panels Using ...

3 ???· Solar photovoltaic systems have increasingly become essential for harvesting renewable energy. However, as these systems grow in prevalence, the issue of the end of life of modules is also increasing. Regular maintenance ...



Google Earth Engine for the Detection of Soiling on Photovoltaic ...

The soiling of solar panels from dry deposition affects the overall efficiency of power output from solar power plants. This study focuses on the detection and monitoring of sand deposition ...



Contact Us

For catalog requests, pricing, or partnerships, please visit:
<https://ssab-proiect.eu>