

# Photovoltaic panels come with built-in insulation

114KWh ESS



**PICC**  
QUALITY ASSURANCE

**RoHS**



**MSDS**

**UN38.3**

**UK  
CA**



## Overview

---

The term building-applied photovoltaics (BAPV) is sometimes used to refer to photovoltaics that are retrofit - integrated into the building after construction is complete. Most building-integrated installations are actually BAPV. Some manufacturers and builders differentiate new construction BIPV from.

Building-integrated photovoltaics (BIPV) are materials that are used to replace conventional in parts of the such as the roof, skylights, or façades. They are increasingly being.

PV applications for buildings began appearing in the 1970s. Aluminum-framed photovoltaic modules were connected to, or mounted on, buildings that were usually in remote areas without access to an electric power grid. In the 1980s photovoltaic module add.

solar panels use a on the inner surface of the glass panes to conduct current out of the cell. The cell contains titanium oxide that is coated with a . Most conventional solar cells use visible and .

(ViPV) are similar for vehicles. Solar cells could be embedded into panels exposed to sunlight such as the hood, roof and possibly the trunk depending on a car's design. .

The majority of BIPV products use one of two technologies: Crystalline Solar Cells (c-SI) or Thin-Film Solar Cells. C-SI technologies comprise wafers of single-cell crystalline silicon which generally operate at a higher efficiency that Thin-Film cells but are more.

In some countries, additional incentives, or subsidies, are offered for building-integrated photovoltaics in addition to the existing feed-in tariffs for stand-alone solar systems. Since July 2006 France offered the highest incentive for BIPV, equal to an extra premium of EUR.

PerformanceBecause BIPV systems generate on-site power and are integrated into the building envelope, the system's output power and thermal properties are the two primary performance indicators. Conventional BIPV systems have a.

What is building-integrated photovoltaics (BIPV)?

However, solar products have evolved – and now, many options are available under the umbrella of "building-integrated photovoltaics," or BIPV. BIPV products merge solar tech with the structural elements of buildings, leading to many creative and innovative ways to generate solar electricity.

Can solar panels be installed on buildings?

To help accelerate that shift, the European Commission has proposed large-scale installation of solar panels – also called photovoltaic (PV) panels – on the roofs of buildings, starting in 2027. Within the built environment solar power is by far the most commonly used renewable energy source.

Are integrated photovoltaics better than non-integrated systems?

The advantage of integrated photovoltaics over more common non-integrated systems is that the initial cost can be offset by reducing the amount spent on building materials and labor that would normally be used to construct the part of the building that the BIPV modules replace.

Why should a building use BIPV solar panels?

In addition, BIPV allows for more widespread solar adoption when the building's aesthetics matter and traditional rack-mounted solar panels would disrupt the intended look of the building.

Can a BIPV solar roof be used in a residential building?

Today, most BIPV products are designed for large commercial buildings, like an apartment complex or community center. However, there will always be exceptions, and the widely-known Tesla Solar Roof is a prime example of BIPV's rising popularity within residential home construction.

Should solar panels be insulated?

Insulation ensures uniform savings throughout the day, while savings deriving from PV depend on solar radiation and day-hour. If, as projections suggest, PV systems become more common in future building stock, short-term energy storage will become increasingly desirable to maintain grid stability and improve generation load profile.

## Photovoltaic panels come with built-in insulation

---

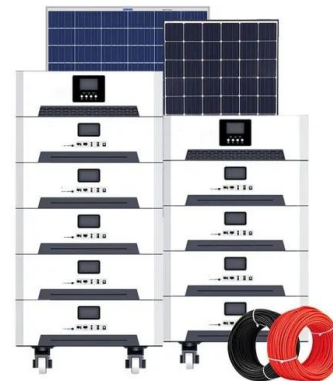


### Introduction of IEC Standard Testing for Photovoltaic Solar Panels

Solar panel testing and certifications Like other types of electronics, solar panel modules go through rigorous testing before installation. local governments, and utility companies have ...

### Building-Integrated Photovoltaics: A Complete Guide

Therefore, in pursuing sustainable urban development, making the most of solar energy with building-integrated photovoltaics (BIPV) is a game-changer. This blog post delves into how photovoltaic tech can be seamlessly ...



### Guide To Building-Integrated Photovoltaics (BIPV)

In this 101-style guide, we will introduce building integrated photovoltaics, identify the technology's top opportunities and challenges, review the different types of BIPV, and showcase the most interesting BIPV ...



### building-integrated photovoltaics (BIPV) , The US Solar Institute

Building-integrated photovoltaics ( BIPV) are photovoltaic materials that are used to replace conventional building materials in parts of the building envelope such as the roof, skylights, or ...



### Type of Wire Used for Solar Panels? (Best + Installation)

THHN wire has a small insulating layer on the conductor, and that insulation is fine for lower voltage solar panel setups. This could cause some problems, though. The solar panel voltage is around 15 volts, but the power ...

### Is your roof ready for solar panels?

Solar panels can be a great investment for a building - especially when combined with non-combustible insulation. Thanks to supportive energy policies, declining costs, and the environmental benefits they provide, solar panels can ...

CE UN38.3 MSDS



### Everything You Need to Know About Solar Wires ...

Solar wires, used to connect the components of a photovoltaic system, come in various types. Typically, it connects four components: the solar panel, the inverter, the charge controller and the batteries. Choosing an ...

## Flexible Solar Panels (Problems + Solutions + ...)

The Renogy 100w Flexible Monocrystalline Solar Panel is the best selection in this range. It has dependable performance and adaptability, bending up to 248 degrees. Other 100w products include the Giaride Flexible ...



50KW modular power converter



## Introduction of IEC Standard Testing for Photovoltaic ...

Solar panel testing and certifications Like other types of electronics, solar panel modules go through rigorous testing before installation. local governments, and utility companies have come out with new mandates that require any grid-tied

...

## Contact Us

For catalog requests, pricing, or partnerships, please visit:  
<https://ssab-proiect.eu>