

## European Solar and Energy Storage Solutions

# Photovoltaic panels with flat top and sloping top

Nominal Capacity

**280Ah**

Nominal Energy

**50kW/100kWh**

IP Grade

**IP54**



## Photovoltaic panels with flat top and sloping top

---

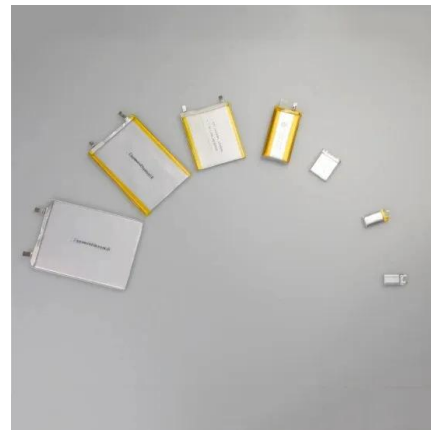


### Solar can be installed on uneven, hilly sites with relative ease

Panels installed on rolling hills follow the contours of the land, but technically remain flat relative to the ground. Schrock has witnessed installers working on 20 and 30° ...

### Flat Roof Solar Panel Mounting Systems Solutions (Ballast

When installing solar panels on a sloping roof, you must work with the roof's existing angle and pitch. This is not the case when installing flat roof panels. Because there is no pitch, the ...



### Choosing the Right Solution Solar on Flat Roofs - ...

When it comes to solar energy, installing solar panels on flat rooftops has become an excellent idea. However, these panels can only give their best advantages once you get the right solutions at the roof construction and ...

### Solar Stack Penetrationless Roof Mount System

Home Owner Benefits. Penetration-Free

Installation: Solar Stack is the only solar panel mounting system that does not require roof penetrations. Innovative Mounting Technology: Utilizes a unique pedestal and code-approved foam ...



## Flat Roof Solar Panels: Everything You Need To Know

Best angle for solar panels on flat roofs. As we say, the fact you get to choose the angle your panels sit on a flat roof is a huge advantage. The optimum angle for a solar panel is between 30 and 40 degrees. Roofs in the ...

## Solar Panels For Flat Roofs: Are They Right for You?

Flat roofs offer more flexibility in terms of your solar panel system design. You can orient them to face south and mount them at the optimal angle to maximize your solar energy generation. Solar panel systems on flat ...



## Is it possible to install solar on a sloped roof without drilling holes?

Flat Direct can be installed double-sided (panels on both sides of the roof) over the ridge, single-sided with a counterweight or single-sided with a ridge connection. The best ...

## Photovoltaic module installation: horizontal vs. vertical

For the use of the southern slope of the mountain and the northern slope of the construction of power plants, similar to flat land, horizontal row is better than vertical row. For power plants ...



## Solar Panel Mounting Structures

Deciding to install a solar system is only the first step. Solar panel installation constitutes a substantial project with significant financial implications, entailing numerous subsequent decisions.. This article explores ...

## Do Solar Panels Installed On A Flat Roof Need Tilt Frames?

But when panels lie flat, water will pool on top of them and stay there after it stops raining. There are currently two ways to attach solar panel tilt racks to flat roofs. to ...



## Installing Solar Panels on a Flat Roof (3 Tips to ...)

In this article, we'll discuss how efficient panels can be on flat roofs, the cost of a flat roof solar panel system and more. We'll also offer four tips for saving money upfront and over time on your flat roof solar array.



## Solar Panels on a Flat Roof: 5 Things to Know

Installing solar panels on flat roofs is not impossible. But there are certain factors you would need to address before proceeding. Survey the condition of your rooftop and the potential hazards it may pose to the solar ...



## Solar Panels on Flat Roof: What You Need to Know

Flat roofs allow for greater flexibility in solar panel design. Flat roofs can be oriented to the south, and solar panels mounted at the right angle can maximize solar energy generation. Also, flat roof solar panels can provide ...

## Best Angle For Solar Panels and Optimal Roof Direction

To emphasise the point, let's look at two sub-optimal positions. We're comparing a flat panel against a 90° wall-mounted south-facing panel. Flat panels produce well in the summer and struggle in the winter. Yearly ...



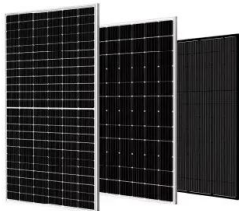


## Solar Panels for Flat Roofs: Roof Requirements [2023]

Solar panels for flat roofs are not more expensive than a standard sloped rooftop installation. In fact, flat roofs are the perfect location for solar panels. There are two locations you can install these energy panels: ground-mounted and ...

## Flat Roof Ballasted Systems Design and Construction

Solar Panel Selection for Flat Roofs. Choosing the right solar panels is pivotal. For flat roofs, panels need to be efficient in space utilization and adaptable to varying tilt angles. The selection process should factor in panel ...



## The best angle and direction for solar panels [UK, 2024]

4 ???· The impact of direction on solar panel output. Your solar panel system's direction is one of the biggest factors in determining its output. This chart below uses an average of 26 ...

## The Complete Guide To Rooftop Solar Mounting

What equipment is used to attach PV panels to a sloped rooftop? The equipment used to attach PV panels to a sloped rooftop includes mounting rails, racking, mounting clips, clamps, lag bolts, sealant, flashing, ...



## Your guide to solar panel mounts in 2024

What is solar panel mounting and racking? Solar panel mounts and racks are equipment that secures solar panels in place. Mounting allows the panels to be adjusted for optimal tilt, which can be based on latitude, seasons, or even time ...

## Contact Us

---

For catalog requests, pricing, or partnerships, please visit:  
<https://ssab-proiect.eu>