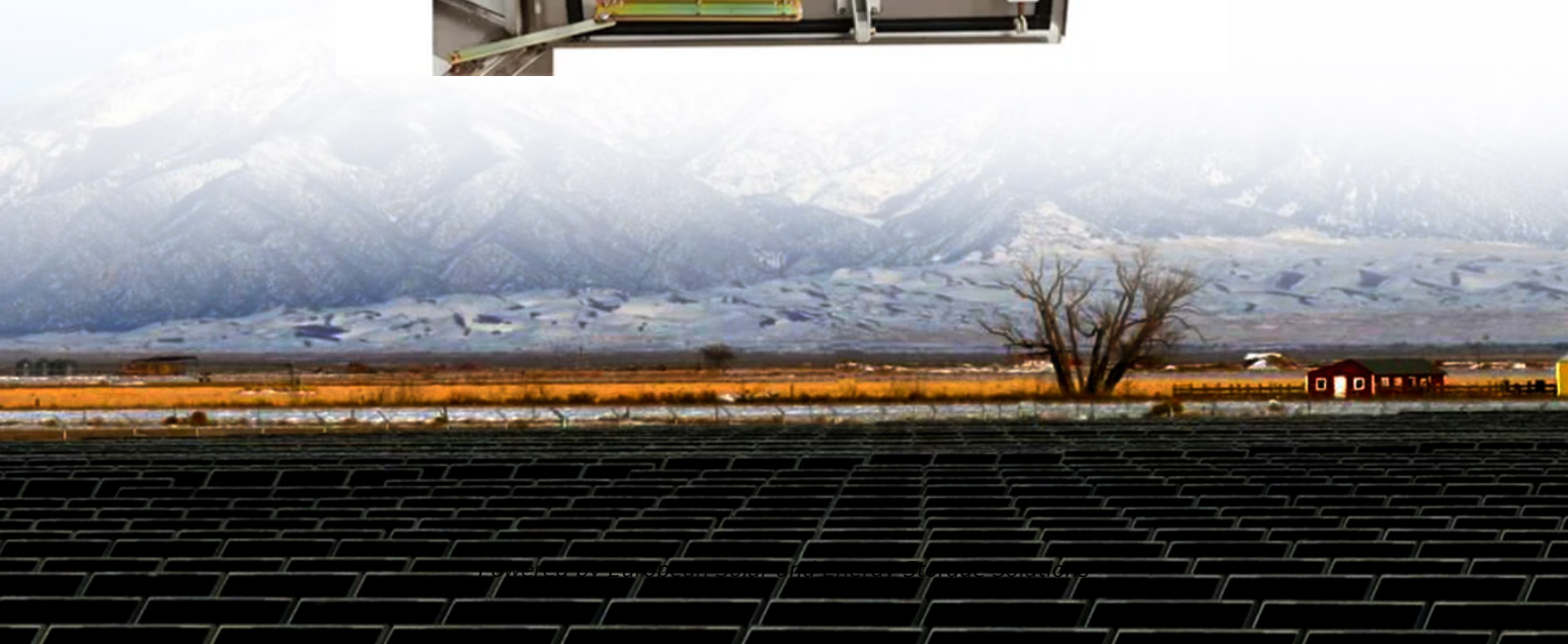


Photovoltaic support planning document example



Overview

These specifications were created with certain assumptions about the house and the proposed solar energy system. They are designed for builders.

Builders should use EPA's online RERH SSAT to demonstrate that each proposed system site location meets a minimum solar resource potential. EPA has developed an online site assessment tool, which assists builders in.

EPA has developed the following RERH specification as an educational resource for interested builders. EPA does not conduct third-party.

The builder should install a 1" metal conduit from the designated inverter location to the main service panel where the system is intended to be tied into the home's electrical service.

What should a documented PV system O&M plan include?

A documented PV system O&M plan for a system or fleet of systems should include the following (depending on system size, complexity, and investment): List of responsible-party contact information including site owner and offtaker of power, utility, local jurisdiction, local landowner, as well as emergency numbers.

What documents should be included in a solar roof plan?

At a minimum, these documents must include specific documentation of dead loads, live loads, wind loads, and, where applicable, snow loads for the existing roof design. These plans will provide important information for the solar designer when the homeowner decides to install a system.

What is a sample documentation for a PV system?

Sample documentation includes: Track record. The asset owner is ultimately responsible for safety related to a PV system, and must meet that responsibility through the specific requirements of O&M service contracts and mitigate risk through accident and liability insurance.

What types of PV systems are covered by this document?

This document is targeted at fleets of third-party-owned, grid-connected PV systems of the following size classes: residential rooftop (typically less than 10 kW); commercial and industrial rooftops and shade structures (10 kW to 1,000 kW); and ground-mounted systems (often greater than 1,000 kW).

What is operation & maintenance (O&M) of photovoltaic (PV) systems?

This guide considers Operation and Maintenance (O&M) of photovoltaic (PV) systems with the goal of reducing the cost of O&M and increasing its effectiveness. Reported O&M costs vary widely, and a more standardized approach to planning and delivering O&M can make costs more predictable.

How do I manage a fleet of PV systems?

Operating and maintaining a fleet of PV systems requires active resource management and data acquisition and analysis by the asset and operation manager(s). Outsource the service to a specialized third-party O&M provider.

Photovoltaic support planning document example



Proposals & Solicitations , US EPA

A Request for Proposal (RFP) is a formal bid document to ask vendors to provide proposals for desired projects, as required by many public agencies (federal, state, local). A solar RFP outlines the photovoltaic (PV) ...

Best practices for solar system commissioning and acceptance

of a PV system. Specific examples include, but are not limited to, the: -> permitting information and any planning conditions that have been discharged; -> grid connection approval and ...



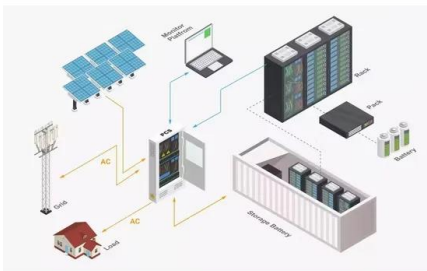
MPPT Simulation of Cluster Photovoltaic Power Stations for New ...

Under the background of peak carbon dioxide emissions and carbon neutrality, the new power system has been developed rapidly. With the development of new power systems, more and ...

A Guide to Solar Plan Sets & Critical Mistakes to Avoid

A solar plan set, also known as a solar permit

package or PV plan set, is a set of documents that provides a detailed plan and specifications for a solar energy system installation. It includes a range of drawings, diagrams, ...



How To Design and Install A Solar PV System

The document discusses how to design and install a standalone solar PV system. It covers key considerations like calculating energy demand, sizing the inverter and batteries, determining daily energy supplied, and selecting system ...

Planning for Utility-Scale Solar Energy Facilities

This guidance and sample ordinance language for utility-scale solar facilities is drawn from actual comprehensive plan and zoning ordinance amendments as well as conditional (special) use permit conditions.



Strategic Plan Examples: Case Studies and Free Strategic Planning Template

Strategic Plan Example - The Bank Hapoalim Vision: To be a leading global financial services firm, with its core in Israel, focused on its clients and working to enhance ...



59 Solar PV Power Calculations With Examples Provided

Calculation Description Formula Variables; Solar Irradiance: Measures how much solar power is received per unit area. $E = H * r * A$: E = energy (kWh), H = annual average solar radiation (kWh/m²/year), r = PV panel efficiency (%), A = area of ...



Design and Analysis of Steel Support Structures Used in ...

photovoltaic (PV) solar power plant projects, PV solar panel (SP) support structure is one of the main elements and limited numerical studies exist on PVSP ground mounting steel frames to ...

Design and Analysis of Steel Support Structures Used in Photovoltaic ...

The results show that: (1) according to the general requirements of 4 rows and 5 columns fixed photovoltaic support, the typical permanent load of the PV support is 4679.4 N, ...



County Durham Plan Solar Energy Supplementary Planning ...

sites for it to support the transition to a low carbon future. It also states community-led initiatives for renewable and low carbon energy should be supported. Planning Practice Guidance ...



APPENDIX A: Template Scope of Work for Net Zero PV Design

...

Phase 1: Net Zero Ready Solar PV Consulting and Design Services. Phase 2: Net Zero Solar PV Installation Services. Specific requirements for each of these project phases are provided in ...



Contact Us

For catalog requests, pricing, or partnerships, please visit:
<https://ssab-proiect.eu>