

European Solar and Energy Storage Solutions

Principle of power generation of commercial solar power station



Overview

A solar power tower, also known as 'central tower' power plant or 'heliostat' power plant, is a type of solar furnace using a tower to receive focused sunlight. It uses an array of flat, movable mirrors (called heliostats) to focus the sun's rays upon a collector tower (the target). Concentrating Solar Power (CSP) systems.

In 2021, the US (NREL) estimated the cost of electricity from concentrated solar with 10 hours of storage at \$0.076 per kWh in 2021, \$0.056 per kWh in 2030, and \$0.052 per kWh in 2050.

There is evidence that such large area solar concentrating installations can burn birds that fly over them. Near the center of the array, temperatures can reach 550 °C which, with the solar flux itself, is enough to incinerate birds. More distant birds' feathers can be.

The Pit Power Tower combines a solar power tower and an aero-electric power tower in a decommissioned open pit mine. Traditional solar power towers are constrained in size by the height of the tower and closer heliostats blocking the line of sight of outer.

- Some concentrating solar power (CSP) towers are air-cooled instead of water-cooled, to avoid using limited desert water
- Flat glass is used instead of the more expensive curved glass
- to store the heat in molten salt containers to continue producing.

Several companies have been involved in planning, designing, and building utility size power plants. There are numerous examples of case studies of applying innovative solutions to solar power. Beam-down (a variation of central receiver plants with Cassegrainian).

• • • • •

The process involves the following steps:1. Solar panels capture sunlight. When sunlight falls on the solar panels, the photons (particles of light) transfer their energy to the electrons in the solar cells.2. Generation of electricity. This energy causes the electrons to become energized, creating direct current (DC) electricity flow. 3. Inverter conversion. 4. Transmission and distribution. .

The process involves the following steps: 1. Solar panels capture sunlight. When sunlight falls on the solar panels, the photons (particles of light) transfer their energy to the electrons in the solar cells. 2. Generation of electricity. This energy causes the electrons to become energized, creating direct current (DC) electricity flow. 3. Inverter conversion. 4. Transmission and distribution. .

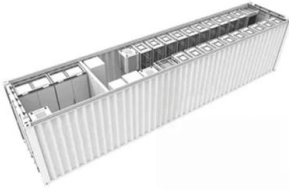
Solar power plants use one of two technologies: Photovoltaic (PV) systems use solar panels, either on rooftops or in ground-mounted solar farms, converting sunlight directly into electric power. Concentrated solar power (CSP) systems use mirrors or lenses to concentrate sunlight to extreme heat to make steam, which is converted into electricity by a turbine.

Photovoltaic power plants use large areas of photovoltaic cells, known as PV or solar cells, to convert sunlight into usable electricity.

In a typical solar power generation system, the sunlight strikes the solar panels, generating DC electricity in the photovoltaic (PV) cells.

Solar thermal-electric power systems collect and concentrate sunlight to produce the high temperatures needed to generate electricity.

Principle of power generation of commercial solar power station



Solar power plant , PPT

13. Solar collectors capture and concentrate sunlight to heat a synthetic oil called thermal oil, which then heats water to create steam. The steam is piped to an onsite turbine-generator to produce electricity, which is then ...

Power Tower System Concentrating Solar-Thermal ...

Power Tower System Concentrating Solar-Thermal Power Basics. In power tower concentrating solar power systems, a large number of flat, sun-tracking mirrors, known as heliostats, focus sunlight onto a receiver at the top of a tall tower. A ...



Commercial Solar Power Plants: A Blueprint for ...

A commercial solar power plant is a large-scale facility designed to harness the energy from the sun and convert it into solar power for industrial use. These power plants consist of thousands of solar panels ...

Design of Commercial Solar Updraft Tower Systems--Utilization of Solar

A solar updraft tower power plant - sometimes also called 'solar chimney' or just 'solar tower' - is a solar thermal power plant utilizing a combination of solar air collector and ...



An Overview of Heliostats and Concentrating Solar Power ...

tower" concentrating solar power plant design, in which a field of mirrors - heliostats, track the sun generation heliostats were made of laminated glass and sized about 40m² on average. The ...

Solar Power Plant - Types, Components, Layout and Operation

Types of Solar Power Plant, Its construction, working, advantages and disadvantages. Photo Voltaic (PV) Principle. Silicon is the most commonly used material in solar cells. Silicon is a ...



A cost-benefit analysis of power generation from commercial reinforced

Let C_k represent total costs of the solar power plant. Then (11) $C_k = C_{P k} + C_{I k} + C_{O k} + C_{T k}$ where $k = 1, \dots, n$, and if $k > m$, $C_{I k} = 0$ and $C_{P k} = 0$. 3.3. Cost-benefit ...



Solar Chimney Power Plants: A Review of the ...

This research presents a comprehensive review of solar chimney power plants (SCPP) as a reliable source of renewable electricity generation. Solar chimney power plants differ from other renewable energy ...



Contact Us

For catalog requests, pricing, or partnerships, please visit:
<https://ssab-proiect.eu>