

European Solar and Energy Storage Solutions

Romania mie infrastructure



Overview

How does Romania's infrastructure financing work?

Romania infrastructure financing gets a boost from an advisory programme designed to help make the most of EU funds. For ordinary Romanians, the result is that the trains will soon be rolling faster than their current 40 km/h.

How has the EIB benefited Romania's railway industry?

“Perhaps the biggest added value that the EIB has brought to us is that they’ve been able to provide teams with different backgrounds who have experience with operators and transport authorities,” says Stefan Roseanu, president of Romania’s Railway Reform Authority.

How much money does the European Union Budget for transport infrastructure?

With €17 billion from the European Union budgeted for transport infrastructure by 2027, the challenge is to put the money to work. This is where Alexis Gressier and his European Investment Bank team comes in.

Romania mie infrastructure



Romania oks EUR 150mn strategic infrastructure investment at ...

Romania has approved "technical-economic indicators" for an over RON 750mn (EUR 150.8mn) rail construction project at the country's largest port Constanta, east Romania, scheduled for completion in two years.

EUR1.5 billion infrastructure projects expected to be completed this ...

The big direct beneficiary of these investments is the industrial and logistics real estate segment. More than 5.4 million sqm of modern logistics space is already in operation across the country, mainly in Bucharest and regional cities in the south, center and west of Romania, and more than 700,000 sqm of new deliveries are expected this year.



Romania's Natural Gas Infrastructure

This brief offers a 'big picture' overview of the current state of the natural gas infrastructure in Romania: data on domestic gas system, pipeline length, physical interconnection points with neighboring countries, import points, new pipeline development, gas transit, cross-border gas interconnectors, state of play regarding their construction, and underground gas storage.

Romania's ICI joins EUR 1.5 bln European AI Infrastructure Initiative

4 ???· Romania, through its National Institute for Research and Development in Informatics (ICI Bucharest), has joined a European consortium to develop advanced computing infrastructure powered by



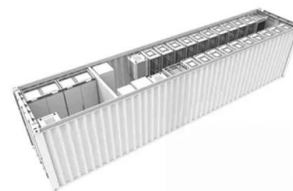
UE investe?te 6,2 miliarde EUR în infrastructuri de ...

Comisia a selectat 107 proiecte de infrastructur? de transport care s? primeasc? granturi UE în valoare de peste 6 miliarde EUR din partea Mecanismului pentru interconectarea Europei (MIE) - instrumentul UE pentru ...



Romania: Five Largest Surface Mines in 2021

Rosia Poieni Mine in Alba, was the largest surface mine in Romania, producing approximately 8.51 million metric tons per annum (mmtpa) of Run-of-Mine (ROM) and primarily produced copper (27.58 thousand tonnes) in 2021. The Rosia Poieni Mine is owned by Government of Romania. The second largest surface mine with an estimated 3.63 mmtpa of ROM, was the Rosia Mine ...



Comisia va investi peste 1 miliard EUR în cadrul Mecanismului ...

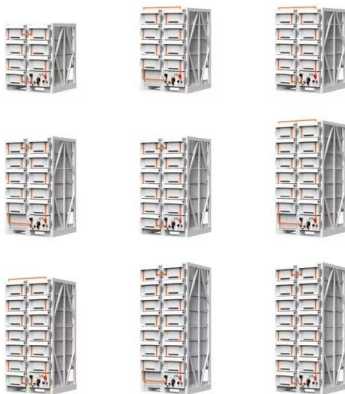
Comisia a adoptat ast?zi primul program de lucru



pentru componenta digitală a Mecanismului pentru interconectarea Europei (MIE Digital), care definește domeniul de aplicare și obiectivele acțiunilor sprijinite de UE care sunt necesare pentru îmbunătățirea infrastructurilor de conectivitate digitală ale Europei în 3 ani. Aceste

Advisory aid for Romania infrastructure financing

Valued at over EUR2 billion, the rail upgrade, which is part-funded by the European Commission as well as the EIB, is the largest transport infrastructure project in Romania in 30 years. The upgraded rail lines will allow ...



Romania gets green light for EUR 1.1 bln grants to finance energy

The Ministry of Transport and Infrastructure will finance, also through the Modernization Fund, 3 investments with a total value of EUR 300 million, aimed at the purchase of 12 trains for the M4

Comisia va investi peste 1 miliard EUR în cadrul ...

Comisia a adoptat astăzi primul program de lucru pentru componenta digitală a Mecanismului pentru interconectarea Europei (MIE Digital), care definește domeniul de aplicare și obiectivele acțiunilor sprijinite de UE ...



Transport and infrastructure in Romania

Our listing of the primary types of transport compares the infrastructure of Romania with the average of all countries in Europe incl. Russia. Overall, the main traffic and transport routes are well developed and in comparatively good condition.



Mecanismul pentru interconectarea Europei 2.0, adoptat de ...

Consiliul Uniunii Europene a anunțat ieri, 14 iunie 2021, adoptarea programului UE Mecanismul pentru interconectarea Europei 2.0 (MIE 2.0), în valoare de 33.,71 miliarde euro, menit să finanțeze dezvoltarea unei infrastructuri durabile și de înaltă performanță în domeniile transporturilor, digitalul



UE investește 6,2 miliarde EUR în infrastructuri de transport

Comisia a selectat 107 proiecte de infrastructură de transport care să primească granturi UE în valoare de peste 6 miliarde EUR din partea Mecanismului pentru interconectarea Europei

(MIE) - instrumentul UE pentru investiții strategice în infrastructura de transport.



30 miliarde EUR pentru proiecte de infrastructură care conectează?

Programul îmbunătățit „Mecanismul pentru interconectarea Europei” (MIE), stabilit de comun acord de Parlament și Consiliu în martie, are un buget de 30 de miliarde EUR pentru perioada 2021-2027. El va finanța proiecte privind transporturile, energia și sectorul digital cu valoare adăugată pentru Uniunea Europeană.



Romanian transport infrastructure: A roller coaster ride

Romania infrastructure financing gets a boost from an advisory programme designed to help make the most of EU funds. For ordinary Romanians, the result is that the trains will soon be rolling faster than their current 40 km/h. Infrastructure Railways Advisory services Romania European Union Transport Balanced regional development.

State of Infrastructure in Romania

About three in four Romanians (76%) are

unhappy with the country's infrastructure while globally only a third of respondents say the same thing about infrastructure in their countries, according to a study by Ipsos. State of Infrastructure in Romania. Travel, Tourism & Transport About three in four Romanians (76%) are unhappy with the



- LiFePO₄ Battery safety
- Wide temperature: -20~55°C
- Modular design, easy to expand
- The heating function is optional
- Intelligent BMS
- Cycle Life: > 6000
- Warranty: 10 years



New roads means more infrastructure for Romania

Reading Time: < 1 minute Romania has signed a RON 562.61mn (EUR 106.64mn) construction contract for a road connecting the Autostrada Transilvania (A3) and the DN1 in Tureni, Cluj county, central Romania, Digi24.ro reported on Friday, 28 July. ADS after 1st paragraph The expressway will include 7 bridges and viaducts, with the longest being a 258 ...

Romania: Five Largest Mines in 2021

Rosia Poieni Mine in Alba, was the largest mine in Romania, producing approximately 8.51 million metric tons per annum (mmtpa) of Run-of-Mine (ROM) and primarily produced copper (27.58 thousand tonnes) in 2021. The Rosia Poieni Mine is owned by Government of Romania. The second largest mine with approximately 5.18 mmtpa of ROM, was the Jilt Mine located in Gorj.



Mining and Local Economic Development

Romania, Mauritania, Madagascar, Nigeria, and Tanzania. By linking mines to local economic development, communities have been able to



benefit from infrastructure improvements and mitigate the impacts of mine closure by developing other sources of livelihood. The mining sector, dedicated to the extraction of nonrenewable resources, has long had a

Romania's ICI joins EUR 1.5 bln European AI Infrastructure Initiative

4 ???· Romania, through its National Institute for Research and Development in Informatics (ICI Bucharest), has joined a European consortium to develop advanced computing ...



Advisory aid for Romania infrastructure financing

Valued at over EUR2 billion, the rail upgrade, which is part-funded by the European Commission as well as the EIB, is the largest transport infrastructure project in Romania in 30 years. The upgraded rail lines will allow a maximum speed of 160 km/h for passenger trains and 120 km/h for freight.

Transport and infrastructure in Romania

Our listing of the primary types of transport compares the infrastructure of Romania with the average of all countries in Europe incl. Russia. Overall, the main traffic and transport routes are well developed and in comparatively good ...



Ministria e Infrastrukturës dhe Energjisë

Republika e Shqipërisë - Ministria e Infrastrukturës dhe Energjisë. Transporti rrugor, ajror, detar, hekurudhor. Rrjeti ujësjetelës/kanalizime sh.a ujësjetelësa projektet në investim, statistika dhe raporte, sistemi elektroenergjetik, industria hidrokarbure, industria minerare, industria jo ...

Mine Infrastructure

WSP's specialized teams of mine infrastructure experts have been serving the mining industry for over 50 years, completing hundreds of mining infrastructure projects, including the largest headframes and hoisting systems in the world, and including material sizing and handling and all associated services.



Romania: Regenerating Mining Communities throughout the ...

The Mine Closure, Environmental and Socioeconomic Regeneration Project successfully closed 23 mines and mining enterprises in 2005-12. Knowledge and procedures on mine closure were brought in line with international best practices, and the project helped strengthen

the legal framework for managing mine activities through the passage of 98 legal codicils.



Contact Us

For catalog requests, pricing, or partnerships, please visit:
<https://ssab-proiect.eu>