

European Solar and Energy Storage Solutions

Rooftop solar photovoltaic panel load



Overview

When installing a solar panel system, you must understand certain features of your roof and the solar panels you're installing. Solar panels differ in weight and length depending on the manufacturer, brand, and amount of energy output your home requires. Determining whether your rooftop can support the solar.

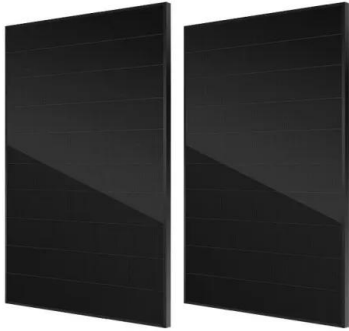
Calculating your solar panel roof load, whether on your own or with the help of experts, is critical to ensure your solar system investment is successful and doesn't damage your roof.

Before diving into how to calculate your solar panel roof load, let's first understand the two key calculations involved: point load and distributed load.

1. A uniformly distributed load is when weight is evenly distributed over an entire.

This solar panel roof load calculator will help you understand whether your roof can safely support solar panels. Based on your roof's material as well as the orientation and age of.

Rooftop solar photovoltaic panel load



Updates on ASCE 7 Standard for Solar PV Systems

Find out how the ASCE 7 standard affects wind load, seismic load, and tornado load considerations for solar photovoltaic (PV) systems. At SEAC's February general meeting, Solar Energy Industries Association Senior ...

Effects of Solar Photovoltaic Panels on Roof Heat Transfer

1 Effects of Solar Photovoltaic Panels on Roof Heat Transfer Anthony Domingueza, Jan Kleissla, and Jeffrey C. Luvallb aUniversity of California, San Diego, Department of Mechanical and ...



Solar Panels on Sloped Roof

Uniform dead load for solar panels is calculated as weight of panel (plus weight of rails under panel) divided by area of panel. Typical value is 3 pounds per square foot (psf). However, load from solar panels must be considered point loads ...

Solar Panel Roof Load Calculator

To calculate the solar panel roof load, you'll want

to dive into two main areas: point load and distributed load. The point load represents the pressure applied to specific points where the solar panels and their mounting ...

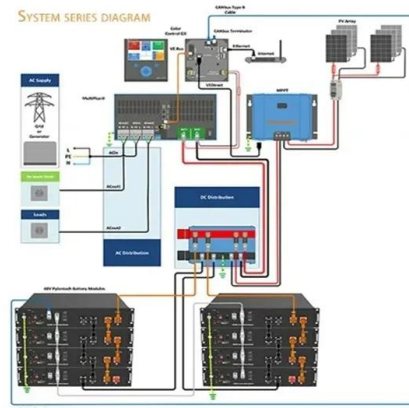


Roof-Mounted Solar PV Panels - Part 1: Structural ...

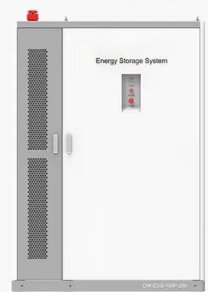
This blog will aim to answer several questions related to evaluating solar panel damage and liability claims such as whether the code has information on solar panel loading and requirements (spoiler alert - yes!) and when and where a ...





PV Loads vs. Rooftop Integrity: What's the truth?

This reflects an assumption that each piece of the structure acts alone, an oversimplification that doesn't evaluate the rooftop system as a whole or consider the load-sharing and load redistribution effects of a roof system. ...



PRODUCT INFORMATION



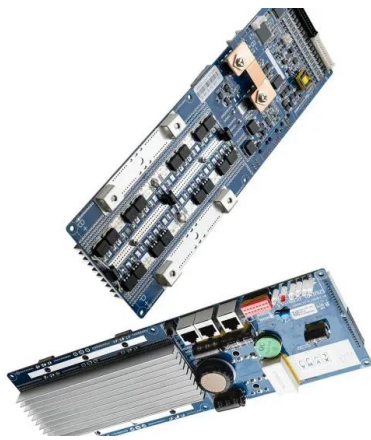
-  **BATTERY CAPACITY**
50kWh-500kWh
-  **DC VOLTAGE RANGE**
400V-1000V
-  **DEGREE OF PROTECTION**
IP54
-  **OPERATING TEMPERATURE RANGE**
-10-50°C

A guide to assessing existing roofs for the addition of ...

This article summarises guidance developed by Hampshire County Council for the assessment of roofs in order to install photovoltaic panels. A guide to assessing existing roofs for the addition of solar panels. Author: ...

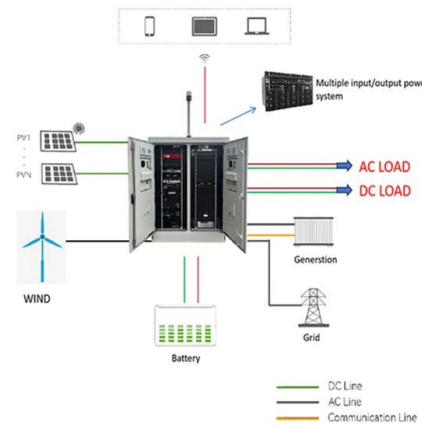
Wind load characteristics of photovoltaic panel arrays mounted on flat roof

To quantify design wind load of photovoltaic panel array mounted on flat roof, wind tunnel tests were conducted in this study. Results show that the first and the last two ...



Impact of Rooftop Photovoltaics on the Distribution System

Ratio of the instantaneous power by PV relative to the sum of both instantaneous powers of PV and load, which is referred to as the self-consumption rate (SCR). Rooftop PV panels are ...



Solar 101: Attaching your solar system to your roof

Bigger chunks of roof are easier, and cheaper, to install solar panels. Keep in mind that a standard residential solar panel is roughly five and a half feet tall by three feet wide. Pictured below, this 290 to 320 watt solar ...



Contact Us

For catalog requests, pricing, or partnerships, please visit:
<https://ssab-proiect.eu>