

European Solar and Energy Storage Solutions

Satisfactory power storage Albania



Overview

The Power Storage is a mid-game building used for buffering electrical energy. Each can store up to 100 MWh, or 100 MW for 1 hour. As it allows 2 power.

Satisfactory power storage Albania



Is this enough power storage? : r/SatisfactoryGame

It provides power if your power usage exceeds your power production. As long as you excess usage doesn't exceed what the battery can supply, your grid won't shut down. If you excess usage does exceed what the battery can supply, for example if a major power plant shuts down and you haven't got enough reserves, then the grid will shut down.

Geothermal Generator usefulness : r/SatisfactoryGame

NOTE: The use of Power Storage allows the buffering of fluctuating Geothermal Generator power generation, and Particle Accelerators Power Consumption, and/or a factory not running at peak efficiency. IMPORTANT: Keep in mind that Power Storage will charge using the excess generated power, up to a rate of 100 MW each. Therefore, it will take at

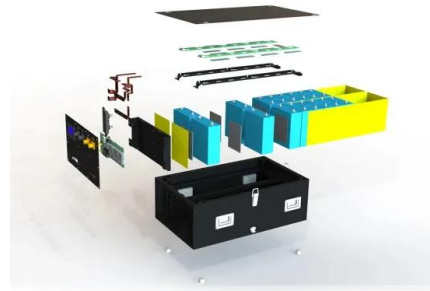


Power Storage :: Satisfactory General Discussions

You need excess power to charge batteries. If you use Biomass Burners then it won't work as those are designed supply only what is required and won't overproduce extra power to charge the storage. If you don't use Biomass Burners then check your network.

Power storage / Blueprints / [SCIM] Satisfactory

Power storage ; Power storage. A simple power store with 20 batteries. Items count 39 ; Categories The assets comes from Satisfactory or from websites created and owned by Coffee Stain Studios, who hold the copyright of Satisfactory. All trademarks and registered trademarks present in the image are proprietary to Coffee Stain Studios.



How to get constant power output from Geothermal Geysers with ...

The power output of the geyser is a wave-function, so in total you can use the average of the output (=400MW) as the most efficient layout. Consumption above will break (not enough power to charge the batteries in time) and below will keep extra energy (batteries don't need to supply that much).

Power Storage

Power Storage Storage Capacity: 100 MWh (100 MW for 1 hour) Max Charge Rate: 100 MW Max Discharge Rate: Unlimited Can be connected to a Power Grid to store excess power production. The stored power can be used later in cases of high consumption.



Power Storage / Generators / Buildings / [SCIM] Satisfactory

Connects to a power grid to store excess power produced. The stored power can be harnessed if



power grid consumption exceeds production.
 Storage Capacity: 100 MWh (100 MW for 1 hour)
 Maximum Charge Rate: 100 MW Maximum
 Discharge Rate: Unlimited

Power does power storage work? : r/SatisfactoryGame

In the game you charge a battery with a hundred million Watts (100 MW) and the energy that is stored is expressed in Mega watt-hours (MWh, = millions watts of power for a duration of an hour) so the MW/hour you mention should just be Megawatt and the power storage can store 100 MWh (Megawatt hour) meaning you can power 100 MW of machines for

Commercial and Industrial ESS

Air Cooling / Liquid Cooling

- Budget Friendly Solution
- Renewable Energy Integration
- Modular Design for Flexible Expansion



Power Storage

The Power Storage is a mid-game building used for buffering electrical energy. Each can store up to 100 MWh, or 100 MW for 1 hour. As it allows 2 power connections, multiple Power Storages can be daisy-chained to store large amounts of energy.

How does Power Storage work? : r/SatisfactoryGame

The biomass burners will never produce more power than there is demand for, and the battery doesn't create demand for power but just stores extra power. Because biomass burners automatically throttle, they never overproduce

and ...



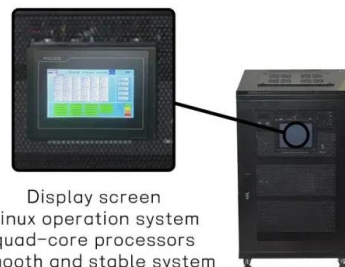
Power Storage

Connects to a power grid to store excess power produced. The stored power can be harnessed if power grid consumption exceeds production.
 Storage Capacity: 100 MWh (100 MW for 1 hour)
 Maximum Charge Rate: 100 MW Maximum
 Discharge Rate: Unlimited



How do I charge power storage? : r/SatisfactoryGame

The point of the power storage is to store excess power in a circuit and a battery on its own is not a circuit, so that might be why. Try connecting a machine to your biomass burner and have it draw energy. If there is excess energy still, ...



Display screen
 Linux operation system
 quad-core processors
 smooth and stable system

How to get constant power output from Geothermal ...

The power output of the geyser is a wave-function, so in total you can use the average of the output (=400MW) as the most efficient layout. Consumption above will break (not enough power to charge the batteries in time) and below will ...



Is this too many power storage : r/SatisfactoryGame

Power storage is good to have when you have that inevitable slip-up where you place one too many buildings and go over your power production, or you are working on a fix for your power plant lines (coal, fuel, nuclear, etc.) - you can fix stuff up and move stuff around without worry of your factory coming to a halt while you're working on it.



Tower of Power -

Using the Blueprint Designer to greatly reduce the endless repetition of building a massive powers storage facility. Was able to place 32 Power Storage's at a time. You start with no floor in the designer, place a 4x4 pattern of power storage units, then ...

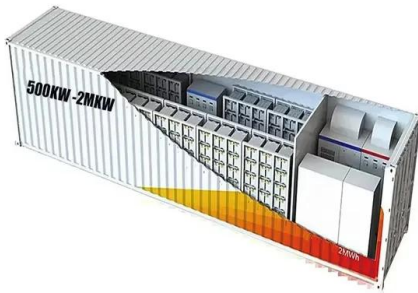
Power grid keeps shutting down despite having enough capacity

Capacity: The sum of the maximum power output of all power generators on the grid.
Production: The current power output of all power generators on the grid. Only differs from "capacity" if there are Biomass Burners on the grid, being the only to scale to demand.
Consumption: The current power demand by all buildings on the grid.



Power Storage :: Satisfactory General Discussions

You need excess power to charge batteries. If



you use Biomass Burners then it won't work as those are designed supply only what is required and won't overproduce extra power to charge the storage. If you don't use Biomass Burners then check your network. Is everything connected properly.

Geothermal Generator

The Geothermal Generator is a power generator building that generates 50-600 MW of power when built on top of a Geyser. It requires no additional input. The power output of Geothermal Generators fluctuates and is affected by the purity of the Geyser. The fluctuation cycle takes one minute, and depends on the time at which the generator was built. Both unlocks are in the

...



Do I understand the Power Storages correctly? :: Satisfactory ...

I need a brief explanation of power storage. With all Power Storages fully charged, I have a total of 8000 MWh available. Let's say my factory has a consumption of 1000 MW and I switch off all coal-fired power plants and biomass burners.

Scalable Power Storage

Scalable Power Storage ; Scalable Power Storage. Battery Array. Pillar in the top corner is just a marker to indicate the position of power connector below foundations. Remove it before scaling up. The assets comes from Satisfactory or from websites created and owned by Coffee

Stain Studios, who hold the copyright of Satisfactory.



Power Storage Tower

Designed to be easy to stack and connect, as well as choosing the exact amount of power storage you need. Has 4 power storages inside. The assets comes from Satisfactory or from websites created and owned by Coffee Stain Studios, who hold the copyright of Satisfactory. All trademarks and registered trademarks present in the image are

Contact Us

For catalog requests, pricing, or partnerships, please visit:
<https://ssab-proiect.eu>