

## European Solar and Energy Storage Solutions

# Solar thermal power station



## Overview

---

This is a list of the largest facilities generating electricity through the use of solar thermal power, specifically concentrated solar power. Eurelios pilot plant, a 1 MW, power tower design in Adrano, Sicily, operational 1981–1987 Solar One pilot plant, operational 1982–1986; converted into Solar Two, operational.

• • • • .

• (2012) by and • (2011) by the • (2011).

• • • .

Where temperatures below about 95 °C (200 °F) are sufficient, as for space heating, flat-plate collectors of the nonconcentrating type are generally used. Because of the relatively high heat losses through the glazing, flat plate collectors will not reach temperatures much above 200 °C (400 °F) even when the heat transfer fluid is stagnant. Such temperatures are too low for

How does a solar thermal power plant work?

The most common type of solar thermal power plants, including those plants in California's Mojave Desert, use a parabolic trough design to collect the sun's radiation. These collectors are known as linear concentrator systems, and the largest are able to generate 80 megawatts of electricity [source: U.S. Department of Energy].

What is solar thermal plant?

Solar thermal plant is one of the most interesting applications of solar energy for power generation. The plant is composed mainly of a solar collector field and a power conversion system to convert thermal energy into electricity.

Which solar power station uses molten salt thermal energy storage?

The Andasol Solar Power Station, Spain, uses a molten salt thermal energy storage to generate electricity, even when the sun isn't shining. Parts of the Solnova Solar Power Station in the foreground. The two towers of the PS10

and PS20 solar power stations can be seen in the background. Solar power tower PV integrated. With 14h heat storage ?

?

.

What is a PS10 solar thermal power station?

The PS10 solar thermal power station. This is a list of the largest facilities generating electricity through the use of solar thermal power, specifically concentrated solar power. Completed December 2014. Gross capacity of 280 MW corresponds to net capacity of 250 MW.

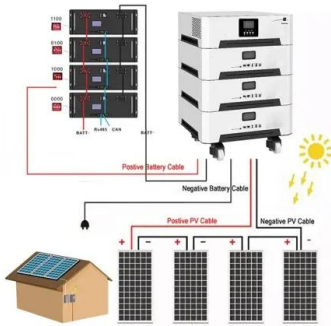
What makes a solar thermal power plant an active system?

An active system requires some way to absorb and collect solar radiation and then store it. Solar thermal power plants are active systems, and while there are a few types, there are a few basic similarities: Mirrors reflect and concentrate sunlight, and receivers collect that solar energy and convert it into heat energy.

What is a solar thermal power plant in Spain?

A solar thermal power plant in Spain. Solar thermal power plants are electricity generation plants that utilize energy from the Sun to heat a fluid to a high temperature. This fluid then transfers its heat to water, which then becomes superheated steam.

## Solar thermal power station



### Solar Power Plant - Types, Components, Layout and Operation

Types of Solar Power Plant, Its construction, working, advantages and disadvantages. Breaking News. In this type of plant, the radiation energy of solar first converted into heat (thermal) ...

### Here's how solar power plants make energy from ...

The longest-operating solar thermal plant in the world, the Solar Energy Generating Systems (SEGS) in the Mojave Desert, California, is one of these power plants. The first plant, SEGS 1, was built



### What is a solar power plant? How it works and types

The operation of a solar photovoltaic plant is based on photons and light energy from the sun's rays. The types of solar panels used in these types of facilities are also different. While solar ...

### Solar thermal power plant: operation and properties

A solar thermal power plant, also known as a

solar thermal power plant, is an industrial installation designed to take advantage of solar radiation and transform it into electrical energy. Although its operating ...



## Solar-Thermal Power and Industrial Processes Basics

Solar-thermal power can replace fossil fuels in a wide variety of industrial applications, including petroleum refining, chemical production, iron and steel, cement, and the food and beverage ...

## Solar explained Solar thermal power plants

Concentrated solar power (CSP, also known as concentrating solar power, concentrated solar thermal) systems generate solar power by using mirrors or lenses to concentrate a large area of sunlight into a receiver. [1]



114KWh ESS



## Concentrating Solar-Thermal Power

Concentrating solar-thermal power (CSP) technologies can be used to generate electricity by converting energy from sunlight to power a turbine, but the same basic technologies can also be used to deliver heat to a variety of industrial ...



## How does solar thermal energy work? Types of ...

A solar thermal power plant is a thermal power plant whose objective is the production of electrical energy. This type of solar plant is classified as a type of high temperature solar thermal energy. In solar thermal power ...



## Concentrating Solar-Thermal Power Basics

What is concentrating solar-thermal power (CSP) technology and how does it work? CSP technologies use mirrors to reflect and concentrate sunlight onto a receiver. The energy from the concentrated sunlight heats a high temperature ...

## Solar thermal energy

Overview High-temperature collectors History Low-temperature heating and cooling Heat storage for space heating Medium-temperature collectors Heat collection and exchange Heat storage for electric base loads

Where temperatures below about 95 °C (200 °F) are sufficient, as for space heating, flat-plate collectors of the nonconcentrating type are generally used. Because of the relatively high heat losses through the glazing, flat plate collectors will not reach temperatures much above 200 °C (400 °F) even when the heat transfer fluid is stagnant. Such temperatures are too low for efficient conversion



## Solar Power Plants: Types,



## Components and Working ...

A concentrated solar power plant is a large-scale CSP system that uses mirrors or lenses to concentrate sunlight onto a receiver that heats a fluid that drives a turbine or engine to generate electricity. A concentrated ...

## What is a thermal power plant? Steam power plant ...

A thermal power plant is an electric plant that converts thermal energy into electrical energy. The difference between one type of plant and another is how the heat is obtained. Solar thermal power plants can be ...



## Contact Us

---

For catalog requests, pricing, or partnerships, please visit:  
<https://ssab-proiect.eu>