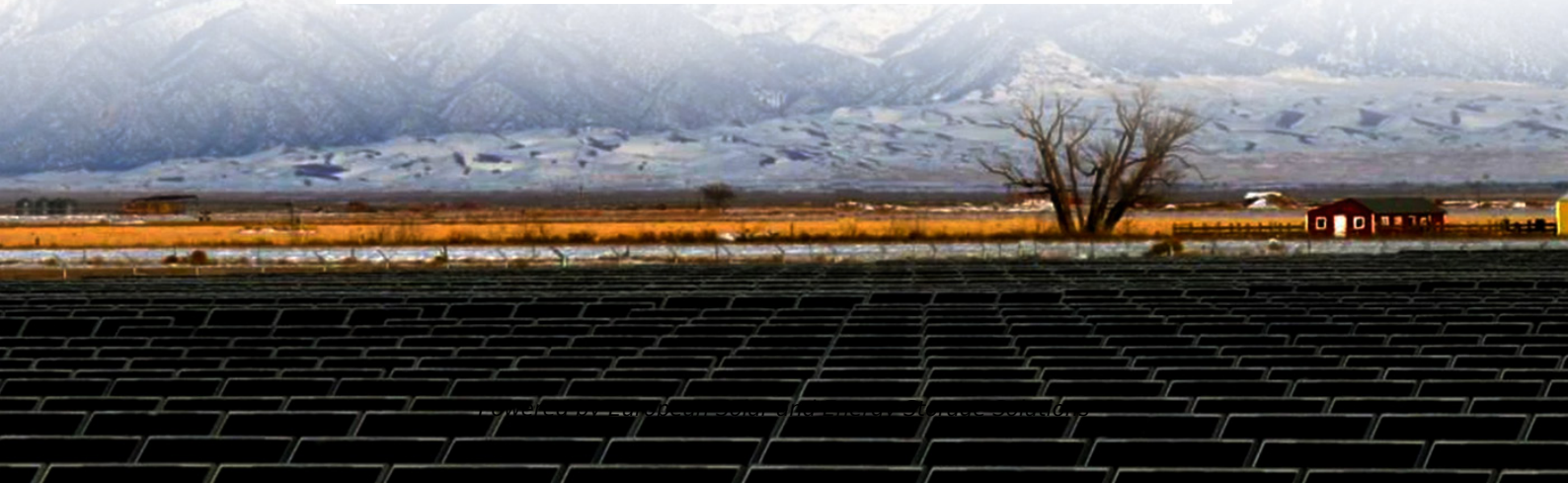


European Solar and Energy Storage Solutions

South Georgia and South Sandwich Islands paneles solares información



Overview

South Georgia and the South Sandwich Islands (SGSSI) is a British Overseas Territory in the southern Atlantic Ocean. It is a remote and inhospitable collection of islands, consisting of South Georgia and a chain of smaller islands known as the South Sandwich Islands. South Georgia is 165 kilometres (103 mi) long and.

17th to 19th centuries
The island of South Georgia was first sighted and visited in April 1675 by , a London merchant and (despite his French.

South Georgia and the South Sandwich Islands are a collection of islands in the South Atlantic Ocean. Most of the islands, rising steeply from the sea, are rugged and mountainous. At higher elevations, the islands are permanently covered with ice and snow.

Executive power is vested in the and is exercised by the , a post held by the . The current Commissioner is , who took the post on 1 July 2022. The executive, based in.

Plants
Native plants
The parts of the islands that are not permanently covered in snow or ice are part of the Islands . In total there are 26 known species of .

The sole official language of the territory is English, which is widely spoken amongst residents currently and used for nearly all administrative functions in the territory. Although English is used in the majority of government functions, the islands' motto *Leo Terram Propriam*.

The climate is classified as polar, and the weather is highly variable and harsh, making a () in . Typical daily maximum temperatures in South Georgia at sea level are around 0 °C (32 °F) in winter (August) and 8 °C (46.4.

Commercial occurred on the islands between 1817 and 1909. During that period 20 visits are recorded by sealing vessels. Economic activity in South Georgia and the South Sandwich Islands is limited. The territory has revenues of.

South Georgia and the South Sandwich Islands (SGSSI) has a population of 3592 people. The territory has a land area of 700 km² and a population density of 311 people per km².

Is South Georgia a small island?

It is a remote and inhospitable collection of islands, consisting of South Georgia and a chain of smaller islands known as the South Sandwich Islands. South Georgia is 165 kilometres (103 mi) long and 35 kilometres (22 mi) wide and is by far the largest island in the territory.

What is the ccTLD for South Georgia and the South Sandwich Islands?

The Internet country code top-level domain (ccTLD) for South Georgia and the South Sandwich Islands is .gs. The parts of the islands that are not permanently covered in snow or ice are part of the Scotia Sea Islands tundra ecoregion.

Are South Georgia and the South Sandwich Islands mountainous?

South Georgia and the South Sandwich Islands are a collection of islands in the South Atlantic Ocean. Most of the islands, rising steeply from the sea, are rugged and mountainous. At higher elevations, the islands are permanently covered with ice and snow.

What happened to South Georgia and the South Sandwich Islands?

In 1985, South Georgia and the South Sandwich Islands ceased to be administered as a Falkland Islands Dependency and became a separate territory. The King Edward Point base, which had become a small military garrison after the Falklands War, returned to civilian use in 2001 and is now operated by the British Antarctic Survey.

Who owns South Georgia and the South Sandwich Islands?

The United Kingdom claimed sovereignty over South Georgia in 1775 and the South Sandwich Islands in 1908. The territory of "South Georgia and the South Sandwich Islands" was formed in 1985; previously, it had been governed as part of the Falkland Islands Dependencies.

How big is South Georgia?

South Georgia is 165 kilometres (103 mi) long and 35 kilometres (22 mi) wide and is by far the largest island in the territory. The South Sandwich Islands lie about 700 kilometres (430 mi) southeast of South Georgia. The territory's total land area is 3,903 km² (1,507 sq mi).

Great Lakes Solx PR, LLC ("Solx"), una empresa de fabricación de paneles solares de propiedad minoritaria, anunció sus planes para establecer, a un costo de \$20 millones, la primera planta de manufactura de estos paneles en Puerto Rico.



Tamaño del Mercado de Sistemas Solares Flotantes, Participación

Se espera que el tamaño del mercado global de Sistemas Solares Flotantes (Paneles Solares Flotantes) alcance los USD 291,75 Millones en 2032, registrando una tasa compuesta anual del 22,4%. Descubra las últimas tendencias y análisis en el Mercado de Sistemas Solares Flotantes. Nuestro informe proporciona una descripción general completa de la industria, incluidos los ...

??????????????

?????????????(South Georgia and South Sandwich Islands)????????? ?????????????????????????????????????????, ?????1982????????????????



SG Geographic Information System - Government of ...

The South Georgia Geographic Information System (SGGIS) enables researchers and the public to access spatially explicit information

about the islands' environmental landscape. The Government of South Georgia & the South ...



South Georgia & The South Sandwich Islands

Protected Areas have been designated; the South Georgia Terrestrial Protected Area (SG TPA) and the South Sandwich Islands Terrestrial Protected Area (SSI TPA). Together they cover the whole landmass of South Georgia and the South Sandwich Islands, including all offshore islands to the mean high-water mark.



SG Geographic Information System - Government of South Georgia ...

The South Georgia Geographic Information System (SGGIS) enables researchers and the public to access spatially explicit information about the islands' environmental landscape. The Government of South Georgia & the South Sandwich Islands commissioned GIS developers at British Antarctic Survey (BAS) to create the SGGIS.

South Georgia, Antarctica & South Sandwich Islands Cruise

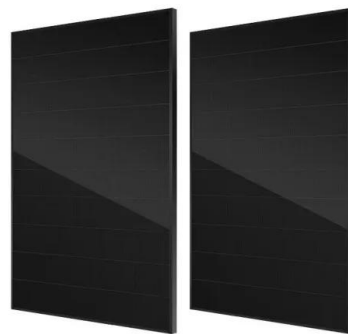
Summary. Welcome to our South Georgia & Antarctic Odyssey featuring the South Sandwich



forces. By 1985, both South Georgia and the South Sandwich

Paneles solares JA Solar , Solarity - distribuidor y mayorista de

La empresa JA Solar le ofrece soluciones para múltiples aplicaciones. Los paneles fotovoltaicos JA Solar están diseñados para ser utilizados en instalaciones en suelo firme así como en tejados, a efectos comerciales o residenciales. La oferta de la empresa no solo ofrece paneles solares monocristalinos JA Solar, sino también accesorios fotovoltaicos, como wafers, células, ...



Standard 20ft containers



Standard 40ft containers

Animals of South Georgia: An Overview of South Georgia's Wildlife

South Georgia and the Sandwich Islands are UK Overseas Territories. And in 2022 the Government designated them as Protected Areas for better conservation and to keep tourism responsible too. Secret Atlas is committed to sustainable travel and limiting our impact on the places we visit. We also follow Arctic Expedition Cruise Operators (AECO)

??????

?????(?:South Georgia and The South Sandwich

Islands,??:SGSSI),????????????,????????????
 ???56°18'-59°30'??26°-28°30'??,???????



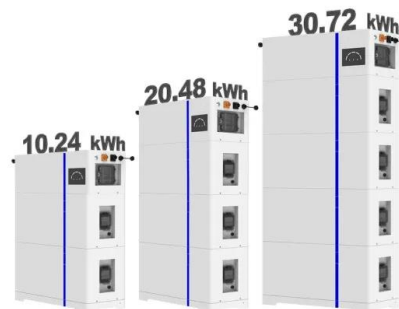
How to Visit

South Georgia & the South Sandwich Islands are only accessible by sea. There is no visitor accommodation ashore, therefore most people visit by cruise ship or yacht. All visits require a visit permit. Visit permit applications for both commercial and private vessels are submitted by the vessel owners or operators. Individual passengers don't

South Georgia Island Cruises & Tours

Revel in the immense vastness and immeasurable beauty of an Antarctica Cruise as you float past extraordinary landscape after extraordinary landscape on your journey to South Georgia Island from Argentina. Push your adventure-loving spirit out of its comfort zone as you take in the sea's icy surface and marvel at the towering glaciers that rise above you from aboard the ...

ESS



Baterías solares

Las baterías solares, también conocidas como baterías fotovoltaicas, son acumuladores eléctricos para almacenar la energía eléctrica generada por una placa fotovoltaica en una instalación de energía solar. Las baterías solares

se utilizan para poder almacenar la energía eléctrica generada por las placas solares fotovoltaicas en las horas de mayor radiación solar.



????????????

????????????(?: South Georgia and the South Sandwich Islands,?? SGSSI)????????????????????
????????????????????????????,?? ?????? ? ?????? ?

48V 100Ah



South Georgia and South Sandwich Islands

South Georgia and South Sandwich Islands. Key Data. General information: Constitutional status: Overseas Territory of the United Kingdom; Land area: 3,903 square kilometers; Population: no permanent population; Energy transition: Installed capacity in 2019: MW; Power generation in 2020: GWh; Renewable energy generation capacity: MW; Main energy



South Georgia and the South Sandwich Islands

South Georgia and the South Sandwich Islands are a collection of exceptionally remote islands in the Southern Atlantic. Although considered as one entity they represent two physically distinct island groups, with the South Georgia cluster

ranging between 560 and 800km west of the South Sandwich Island arc (Figure 1).



South Georgia and the South Sandwich Islands

South Georgia and the South Sandwich Islands (SGSSI) is a British Overseas Territory in the southern Atlantic Ocean. It is a remote and inhospitable collection of islands, consisting of South Georgia and a chain of smaller islands known as the South Sandwich Islands. South Georgia is 165 kilometres (103 mi) long and 35 kilometres (22 mi) wide

Geology of South Georgia and the South Sandwich Islands

The geology of South Georgia and the South Sandwich Islands is part of the largely submerged Scotia Ridge. The island of South Georgia is unusual among oceanic islands for having pre-Cretaceous sedimentary rocks underlying much of the island and a ...



Contact Us

For catalog requests, pricing, or partnerships, please visit:
<https://ssab-proiect.eu>