

European Solar and Energy Storage Solutions

South Georgia and South Sandwich Islands topray solar



Overview

South Georgia and the South Sandwich Islands are a collection of islands in the South Atlantic Ocean. Most of the islands, rising steeply from the sea, are rugged and mountainous. At higher elevations, the islands are permanently covered with ice and snow. The South Georgia Group lies about 1,390 kilometres (860 mi; 750 nmi) east-

of the tip of South America. The islands were first sighted in 1775 by James Cook and named in his honour. The islands were first visited by a British expedition in 1807 and again in 1822. The islands were first visited by a British expedition in 1807 and again in 1822.

South Georgia and the South Sandwich Islands are a collection of islands in the South Atlantic Ocean. Most of the islands, rising steeply from the sea, are rugged and mountainous. At higher elevations, the islands are permanently covered with ice and snow. The South Georgia Group lies about 1,390 kilometres (860 mi; 750 nmi) east-

of the tip of South America. The islands were first sighted in 1775 by James Cook and named in his honour. The islands were first visited by a British expedition in 1807 and again in 1822. The islands were first visited by a British expedition in 1807 and again in 1822.

South Georgia and South Sandwich Islands topray solar



South Georgia & The South Sandwich Islands

Protected Areas have been designated; the South Georgia Terrestrial Protected Area (SG TPA) and the South Sandwich Islands Terrestrial Protected Area (SSI TPA). Together they cover the whole landmass of South Georgia and the South Sandwich Islands, including all offshore islands to the mean high-water mark.

25 Interesting South Georgia Facts and Tips to Inspire ...

1. South Georgia is not part of Antarctica. South Georgia and the South Sandwich Islands are a chain of sub-Antarctic islands in the Southern Ocean. They are located more than 2,000km from the continent of Antarctica but the reason ...



South Georgia Island Population 2024

South Georgia, sometimes referred to as Isla San Pedro, is an island that is located in the South Atlantic Ocean and is part of the British administration of the South Sandwich Islands and part of the British Overseas Territory of South Georgia. The island is located 1400km from the Falkland Islands and is about 170km long and 35km wide.

???????

?????(?:South Georgia and The South Sandwich Islands,?:SGSSI),????????????,????????????????56 °18?-59°30????26°-28°30???,????????????????????2, 000????????????????????,????????310?????



South Sandwich Islands

The South Sandwich Islands (Spanish: *Islas Sandwich del Sur*) are a chain of uninhabited volcanic islands in the South Atlantic Ocean. They are administered as part of the British Overseas Territory of South Georgia and the South Sandwich Islands .

??????

?????(?:South Georgia and The South Sandwich Islands,?:SGSSI),????????????,????????????????56 °18?-59°30????26°-28°30???,????????



Fisheries Overview - Government of South Georgia & the South Sandwich

Krill at South Georgia & the South Sandwich Islands are not self-sustaining but dependent on the northerly movement of krill in the currents of the Southern Ocean from their spawning grounds under the ice in the Antarctic Peninsula and Weddell Sea. Krill reproduction is highly

dependent on sea ice conditions and hence environmental factors.

South Georgia

South Georgia is an island in the South Atlantic Ocean that is part of the British Overseas Territory of South Georgia and the South Sandwich Islands. It lies around 1,400 kilometres (870 mi) east of the Falkland Islands. Stretching in the east-west direction, South Georgia is around 170 kilometres (106 mi) long and has a maximum width of 35



South Georgia and South Sandwich Islands

Location: Shag Rocks general pelagic--over 2 miles offshore South Georgia and South Sandwich Islands. Great Shearwater *Ardeanna gravis* # Count: 1. Date: 11 Dec 2024. Observer: Letitia Lussier. Location: Shag Rocks general pelagic--over 2 miles offshore South Georgia and South Sandwich Islands.

SOUTH SANDWICH ISLANDS ISRA SOUTH GEORGIA AND ...

The area lies within the South Georgia and South Sandwich Islands Marine Protected Area. This Important Shark and Ray Area is benthic and subsurface and is delineated from 500-1,900 m based on the depth range of Qualifying Species in the area.



??????????????

??????????????(South Georgia and South Sandwich Islands)?????????? ???,

????1982???????????????



Animals of South Georgia: An Overview of South Georgia's Wildlife

South Georgia and the Sandwich Islands are UK Overseas Territories. And in 2022 the Government designated them as Protected Areas for better conservation and to keep tourism responsible too. Secret Atlas is committed to sustainable travel and limiting our impact on the places we visit. We also follow Arctic Expedition Cruise Operators (AECO)

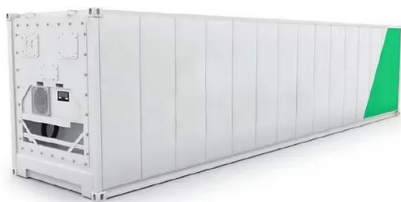
114KWh ESS



South Georgia and the South Sandwich Islands Tourist Visa

...

If you're considering exploring South Georgia and the South Sandwich Islands beyond the usual tourist spots, our comprehensive guide on South Georgia and the South Sandwich Islands tourist visa offers deeper insights and broader options for travelers of different nationalities. For those transiting through other countries en route to South



Visitor Sites

A list of 49 approved visitor sites is included as

southeast of the island of South Georgia. They extend for 190 miles (305 km), occupy 120 square miles (310 square km), and are covered with glaciers.

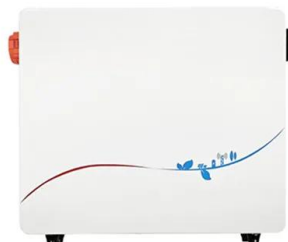


South Georgia and the South Sandwich Islands

South Georgia and the South Sandwich Islands. Published: September 2018. Citation: UNEP-WCMC. 2018, A review of terrestrial protected areas: South Georgia and the South Sandwich Islands. Cambridge, UK. The UN Environment World Conservation Monitoring Centre (UNEP-WCMC) is the specialist biodiversity assessment centre of

South Georgia and the South Sandwich Islands

South Georgia and the South Sandwich Islands are a collection of islands in the South Atlantic Ocean. Most of the islands, rising steeply from the sea, are rugged and mountainous. At higher elevations, the islands are permanently covered with ice and snow.



Contact Us

For catalog requests, pricing, or partnerships, please visit:
<https://ssab-proiect.eu>