

## European Solar and Energy Storage Solutions

# Supervision of lithium batteries for energy storage power stations



## Overview

---

Among many electrochemical energy storage technologies, lithium batteries (Li-ion, Li-S, and Li-air batteries) can be the first choice for energy storage due to their high energy density. At present, Li-ion batteries have entered the stage of commercial application and will be the primary electrochemical energy storage technology in the future.

Among many electrochemical energy storage technologies, lithium batteries (Li-ion, Li-S, and Li-air batteries) can be the first choice for energy storage due to their high energy density. At present, Li-ion batteries have entered the stage of commercial application and will be the primary electrochemical energy storage technology in the future.

Lithium batteries are promising techniques for renewable energy storage attributing to their excellent cycle performance, relatively low cost, and guaranteed safety performance. The performance of the LiFePO<sub>4</sub> (LFP) battery directly determines the stability and safety of energy storage power station operation, and the properties of the internal .

Accurately detecting voltage faults is essential for ensuring the safe and stable operation of energy storage power station systems.

According to the data collected by the United States Department of Energy (DOE), in the past 20 years, the most popular battery technologies in terms of installed or planned capacity in grid applications are flow batteries, sodium-based batteries, and Li-ion batteries, accounting for more than 80% of the battery energy storage capacity.

Battery energy storage system (BESS) has a significant potential to minimize the adverse effect of RES integration with the grid and to improve the overall grid reliability because of the advantages such as flexibility, scalability, quick response time, self-reliance, power storage and delivering capability and reduction of carbon footprint . Are large-scale lithium-ion battery energy storage facilities safe?

Abstract: As large-scale lithium-ion battery energy storage power facilities are

built, the issues of safety operations become more complex. The existing difficulties revolve around effective battery health evaluation, cell-to-cell variation evaluation, circulation, and resonance suppression, and more.

What are the technologies for energy storage power stations safety operation?

Technologies for Energy Storage Power Stations Safety Operation: the battery state evaluation methods, new technologies for battery state evaluation, and safety operation. References is not available for this document. Need Help?

Are lithium-ion battery energy storage systems sustainable?

Presently, as the world advances rapidly towards achieving net-zero emissions, lithium-ion battery (LIB) energy storage systems (ESS) have emerged as a critical component in the transition away from fossil fuel-based energy generation, offering immense potential in achieving a sustainable environment.

Can Li-ion batteries be used for energy storage power stations?

Li-ion batteries can also be used for energy storage power stations (ESPSs). ESPSs have larger space, which is conducive to the full development of thermal management systems. However, ESPSs have higher construction costs and social efficiency and require higher requirements for safety.

Why are lithium ion batteries important?

With the construction of new power systems, lithium (Li)-ion batteries are essential for storing renewable energy and improving overall grid security 1, 2, 3. Li-ion batteries, as a type of new energy battery, are not only more environmentally friendly but also offer superior performance 4.

Are lithium batteries a good energy storage device?

Therefore, lithium batteries with higher energy density (Li-S and Li-air batteries) may become promising energy storage devices in the long run. In addition, irrespective of the kinds of batteries that will be used in the future, safety is a primary factor for the further application of lithium batteries.

## Supervision of lithium batteries for energy storage power stations

---



### Research on Key Technologies of Large-Scale Lithium Battery

...

This paper focuses on the research and analysis of key technical difficulties such as energy storage safety technology and harmonic control for large-scale lithium battery energy storage ...

### Battery energy storage system

A battery energy storage system (BESS) or battery storage power station is a type of energy storage technology that uses a group of batteries to store electrical energy. Since 2010, more and more utility-scale battery storage plants rely ...



### The National Standard "Safety Regulations for Electrochemical Energy ...

This national standard puts forward clear safety requirements for the equipment and facilities, operation and maintenance, maintenance tests, and emergency disposal of ...

### Frontiers , Electro-thermal coupling modeling of ...

1 Zhangye Branch of Gansu Electric Power

Corporation State Grid Corporation of China  
 Zhangye, Zhangye, China; 2 School of New  
 Energy and Power Engineering, Lanzhou Jiaotong  
 University Lanzhou, Lanzhou, ...



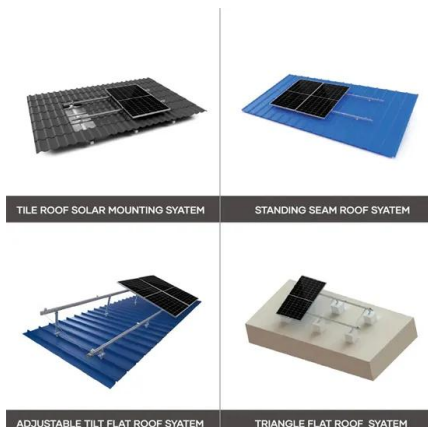
## Fault diagnosis technology overview for lithium-ion battery energy

With an increasing number of lithium-ion battery (LIB) energy storage station being built globally, safety accidents occur frequently. Diagnosing faults accurately and quickly ...



## Research on Key Technologies of Large-Scale Lithium Battery Energy

This paper focuses on the research and analysis of key technical difficulties such as energy storage safety technology and harmonic control for large-scale lithium battery energy storage ...



## Battery Energy Storage: How it works, and why it's important

An installation of a 100 kW / 192 kWh battery energy storage system along with DC fast charging stations in California Energy Independence. The popularity of lithium-ion batteries in energy ...

## Optimal Power Model Predictive Control for Electrochemical Energy

According to statistics, by the end of 2021, the cumulative installed capacity of new energy storage in China exceeded 4 million kW. By 2025, the total installed capacity of ...

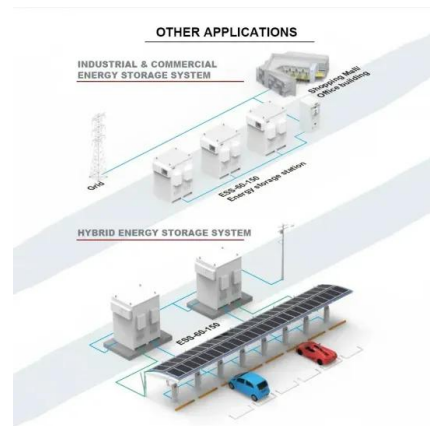


## Applications of Lithium-Ion Batteries in Grid-Scale Energy Storage

In the electrical energy transformation process, the grid-level energy storage system plays an essential role in balancing power generation and utilization. Batteries have ...

## Explosion characteristics of two-phase ejecta from large-capacity

This work can lay the foundation for revealing the disaster-causing mechanism of explosion accidents in lithium-ion battery energy storage power stations, guide the safe design of energy ...



## Battery Hazards for Large Energy Storage Systems

According to the data collected by the United States Department of Energy (DOE), in the past 20 years, the most popular battery technologies in terms of installed or planned capacity in grid applications are flow batteries, ...



## Contact Us

---

For catalog requests, pricing, or partnerships, please visit:  
<https://ssab-proiect.eu>