

European Solar and Energy Storage Solutions

U S Outlying Islands comtec power



Overview

The United States Minor Outlying Islands is a statistical designation defined by the 's code. The entry code is . The minor outlying islands and groups of islands comprise eight United States in the Pacific Ocean (, , , , , , , ,)

U S Outlying Islands comtec power



?????? ??????

???,????????????,??????"????????"????????(?:Uni
ted States Minor Outlying Islands),????????ISO 3
166-1????????????????????,????????"UM"????????????
?

?????????

????????(?????????????????????:United States
Minor Outlying Islands)?ISO 3166-1 ??????????????
????????????9???????????????????????????? ISO ...



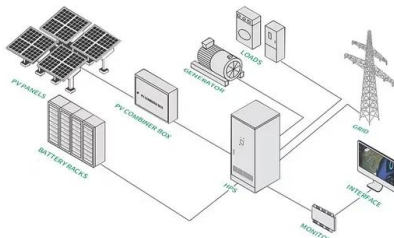
3M(TM) PELTOR(TM) ComTac(TM) IV Hybrid Communication Headset Single Comm ...



No software loads or outside power required;
complete self-contained headset with Rx/Tx fail
safe; EMI. MIL STD 461E, Department of Defense
Interface Standard, Requirements for the Control
of Electromagnetic Interference Characteristics
of Subsystems and Equipment U.S. Outlying
Islands (USD \$) Uganda (USD \$) Ukraine (USD \$)
United Arab

Comtec Parts & Manuals

Parts Town has the largest in-stock inventory of genuine OEM Comtec parts with fast same day shipping until 9pm ET. Find the part you need today. We offer the following services to shoppers in United States: Comtec 00203250 Power Switch Kit, Rocker. List Price: \$ 156.80.



What are the United States Minor Outlying Islands?

The Caribbean islands considered part of the United States Minor Outlying Islands include Navassa Island, a small island off the coast of Haiti that is claimed by both Haiti and a small group of Columbians calling the island a sovereign nation; the Baja Nuevo Bank, a small uninhabited sand bank; and the Serranilla Bank, a larger, mostly

Vestas to merge technology, production and supply chain divisions

Tick here to opt out of curated industry news, reports, and event updates from Power Technology. Submit and download. Vestas was confirmed for delivery of turbines for Equinor's US 810MW Empire Wind 1 offshore project. To be located between 15 and 30 miles offshore Long Island, New York, Empire Wind 1 will feature 147 turbines.



How OTEC can transform the power generation on tropical islands

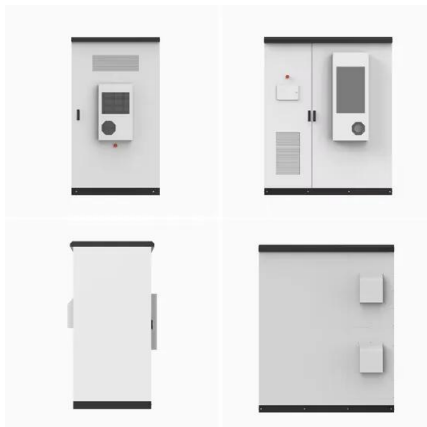
Island nations struggle to access clean baseload energy due to their heavy dependence on fossil fuels. Diesel is often their primary source of energy, which is expensive, environmentally harmful and impedes energy security efforts.



Unoccupied Territories: The Outlying Islands of America's Realm

Faced with the perception that Jarvis, and other unoccupied territorial islands in the Pacific, may not be recognized as US territory, the federal government took unusual action, establishing a

...



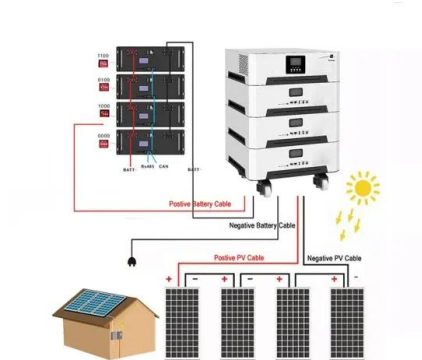
3M(TM) PELTOR(TM) ComTac(TM) XPI Headsets , 3M Lebanon

3M(TM) PELTOR(TM) ComTac(TM) XPI Headsets feature a level-dependent function, protect against noise levels up to 28 dB and fit comfortably with other protective gear. Our headsets are available in green or black and in a choice of foldable headband, neckband or helmet-mounted models.

United States Minor Outlying Islands

The minor outlying islands and groups of islands comprise eight United States insular areas in the Pacific Ocean (Baker Island, Howland Island, Jarvis Island, Johnston Atoll, Kingman Reef,

Midway Atoll, Palmyra Atoll, and Wake Island) and one in the Caribbean Sea (Navassa Island).



Komtech Multistar XL3

Power Source. Waste Streams. Max Throughput. Multistar XL3. Diesel Engine-Powered Gen Set / 80 kVA. Organics and Food Waste. Up To ~400 yd³ Per Hour. View Product. Consider Us Working Partners. Once we understand your unique waste processing challenges and goals we'll apply our industry experience, product expertise, and full-resource

Contact us

United States +1 (800) 524-8350 +1 (860) 635-3631; ripley_csr@hubbell ; ripley_tech@hubbell ; Ripley Europe Limited. Serving Europe, Africa, Asia & Oceania Building 47, Second Avenue, The Pensnett Estate Kingswinford, West Midlands DY6 7UZ United Kingdom +44 0 1384 400070 +44 0 1384 400060;



25 New Coastal, Remote, and Island Communities Join Energy ...

To make progress on addressing their energy challenges, 25 communities have joined the U.S. Department of Energy's Energy Transitions Initiative Partnership Project (ETIPP)--a technical

assistance program led by the ...



Feasibility of OTEC Development for U.S. Islands

o Purpose is to understand feasibility for OTEC in a range of US islands
 o Reached out to experts around the world
 o Examining barriers to development: technical, environmental, hazards, societal acceptance
 o 4 use cases to examine feasibility: Puerto Rico, St. Croix, Hawaii, & Guam



Comtech wins US Army funding for upgraded BFT satellite terminal

United States Army View all. The Command & Control Technologies group won the \$4.2m funding through its subsidiary Comtech Mobile Datacom. Also known as the Blue Force Tracker-2 High Capacity (BFT-2-HC) Satellite Transceiver, the MT-2025 transceiver supports the army's Blue Force Tracking-2 (BFT-2) system.



Benefits of OTEC can Revolutionize Island Energy Sector

OTEC has the power to transform power generation on tropical islands, it offers a clean and renewable energy solution that reduces

carbon footprints and stabilizes energy costs - but the benefits do not stop there.



Unoccupied Territories: The Outlying Islands of America's Realm

Faced with the perception that Jarvis, and other unoccupied territorial islands in the Pacific, may not be recognized as US territory, the federal government took unusual action, establishing a program in 1935, known as the American Equatorial Islands Colonization Project.

Three Phase UPS Archives

High-efficiency, fully integrated, and end-to-end uninterruptible power supply solutions protect your enterprise-wide networks, data centers, mission-critical systems, and industrial manufacturing processes. Write to us. sales@comtec . Office hours. Mon-Fri 9:00am - 5:30pm. Contact details Comtec House, 46a Albert Road North, Reigate



Comtec 00203250 Power Switch Kit, Rocker , Parts Town

Find OEM Comtec 00203250 Power Switch Kit, Rocker replacement part at Parts Town with fast same day shipping on all in-stock orders until 9pm ET. We offer the following services to shoppers in United States: See totals in your

currency Multiple payment methods available
Multiple shipping options available Start shopping on partstown



United States Minor Outlying Islands

SummaryHistoryOverviewTransportationFlora and faunaSee alsoExternal links

The United States Minor Outlying Islands is a statistical designation defined by the International Organization for Standardization's ISO 3166-1 code. The entry code is ISO 3166-2:UM. The minor outlying islands and groups of islands comprise eight United States insular areas in the Pacific Ocean (Baker Island, Howland Island, Jarvis Island, Johnston Atoll, Kingman Reef, Midway Atoll, Palmyra Atoll



Work with us

Comtec is a leading IT company with expertise in Cloud Services, Network Infrastructure Management and Computing Environment Builds. We work with many big names, but strive to offer the best levels of continuous service to all our clients. The successful candidate will be a highly motivated and energetic person who can demonstrate resilience,

?????????

?????????(?:United States Minor Outlying Islands),?????????ISO 3166-1????????????????????GB/T

2659????????????????,??????UM?



Contact Us

For catalog requests, pricing, or partnerships, please visit:
<https://ssab-proiect.eu>