

European Solar and Energy Storage Solutions

What does a photovoltaic panel array look like



Overview

What is a solar array?

A solar array is a collection of multiple solar panels that generate electricity. When an installer talks about solar arrays, they typically describe the solar panels themselves and how they're situated - aka the entire solar photovoltaic, or PV system. To create solar energy, sunlight must hit your panels' photovoltaic cells.

How many solar panels does a utility solar array have?

Utility solar array - thousands of panels: Solar power plants, or solar farms, have power capacities of one Megawatt (1 million watts) or more, so they would have at least two-and-a-half-thousand 400 W solar panels. [Learn more: How do solar panels work?](#)

How do solar arrays work?

.

Why is proper solar panel array layout important?

Proper solar panel array layout is crucial for maximizing energy generation in solar photovoltaic (PV) systems. This involves selecting the right components, such as high-quality solar panels and appropriate mounting systems.

How do you calculate a photovoltaic array size?

Calculate the photovoltaic array size by estimating the daily energy demand, factoring system efficiency, and using location-specific solar irradiance data to determine how many solar panels are necessary. Dividing the energy demand by solar panel output can provide the required number of panels for the array.

How does a solar array work?

Your array is connected to an inverter or multiple inverters, which convert the DC electricity generated by the solar cells in your panels into usable alternating current (AC) electricity. The term solar array is often also used to describe large-scale solar projects; however, it can refer to just about any grouping of solar panels.

What is a photovoltaic array?

A photovoltaic array is the complete power-generating unit, consisting of any number of PV modules and panels. The performance of PV modules and arrays are generally rated according to their maximum DC power output (watts) under Standard Test Conditions (STC).

What does a photovoltaic panel array look like



Solar panel wiring basics: How to wire solar panels

Key electrical terms for solar panel wiring. In order to understand the rules of solar panel wiring, it is necessary to understand a few key electrical terms -- particularly voltage, current, and ...



A Full Guide to Photovoltaic Array Design and ...

Calculate the photovoltaic array size by

What is a solar charge controller and why are they important?

So, to add energy to the battery, the output voltage of a solar panel must always be a little higher than the voltage of the battery it's charging. Thankfully, solar panels are designed to put out ...

Outdoor Cabinet BESS
50 kWh/500 kWh Battery Storage System
Industrial and Commercial Energy Storage



- All In One**
Integrating battery packs
- High-capacity**
50-500kWh
- Degree of Protection**
IP54
- Operating Temperature Range**
-20~60°C (Derating above 50 °C)
- Intelligent Integration**
Integrated photovoltaic storage cabinet
- Rated AC Power**
50-100kW
- Altitude**
3000m(>3000m derating)

What are Solar Arrays

A solar array is a group of solar panels connected together as part of your home solar system. In this guide, you'll learn what exactly a solar array is, how it differs from a single panel, and how to determine the right ...

estimating the daily energy demand, factoring system efficiency, and using location-specific solar irradiance data to determine how many solar panels are necessary. Dividing ...



Solar Array: Working, Components, Features, Uses, ...

Since solar arrays help generate electricity, users can utilise them to charge electric devices like mobiles, laptops, heaters, air conditioners, coolers, television, washing machines, and other household appliances. A ...



Solar Shingles 101: Pros, Cons & Best Brands

A solar panel will typically maintain high energy efficiency for 20-25 years. Solar shingle longevity is dependent on the manufacturer and the installer. For instance, Tesla's solar roof shingles ...



Solar Panel Array Layout: Optimizing Your Solar PV ...

Proper solar panel array layout is crucial for maximizing energy generation in solar photovoltaic (PV) systems. This involves selecting the right components, such as high-quality solar panels and appropriate mounting systems.



Photovoltaic Array or Solar Array uses PV Solar Panels

Photovoltaic Array The Solar Photovoltaic Array. If photovoltaic solar panels are made up of individual photovoltaic cells connected together, then the Solar Photovoltaic Array, also known ...



Solar arrays: What are they & why do you need them?

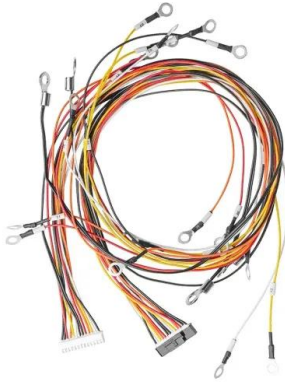
The solar array is the most important part of a solar panel system - it holds all the panels in your system, collects sunlight, and converts it into electricity. In this article, we'll share some common questions to ask yourself ...



A Full Guide to Photovoltaic Array Design and Installation

A solar array is a collection of solar panels, wired together into a circuit. A solar array that can power an average household would require between 13 and 21 solar panels. Solar arrays generate DC power; it must first be converted into ...



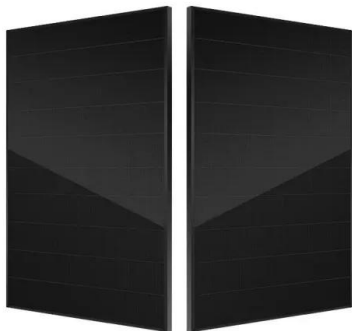
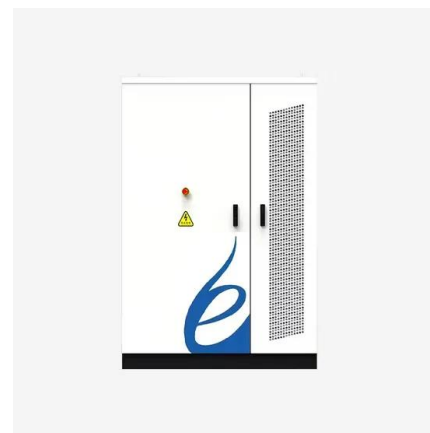


A Step By Step Guide On How Solar Farms Work , Solar

What Are Solar Panels? Before we begin to explain the overarching process of the solar farm, let us first define the nuances of solar panels, a.k.a. Photovoltaic panels (and the solar cells from ...

What Is a Solar Array? (with pictures)

A solar array is a loosely defined term referring to a group of photovoltaic solar panels or cells that convert sunlight to electricity, arranged and linked in such a way as to operate as a single unit. The term can also refer to ...

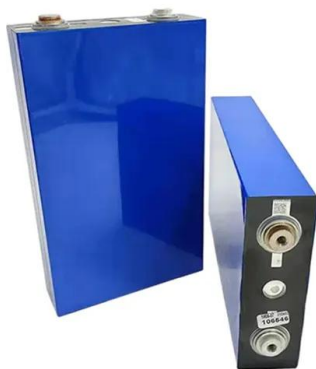


Solar Cheat Sheet: What You Need to Know Before Getting Solar Panels

Solar panel maintenance is generally minimal and fairly easy. Even so, we've got the info you need to keep your panels in the best possible shape. Solar Panels Get Less Efficient Over Time.

Solar trees: Your guide to this fast-growing solar trend

They look less like a solar tree, and more like a solar canopy or solar carport. Their standard solar tree is mounted on a single central tower, with a 35 square-foot 60 module solar photovoltaic ...



What is Solar Energy & How Do Solar Panels Work?

If one solar panel has an issue, the rest of the solar array still performs efficiently. How Does a Solar Panel System Work? Here's an example of how a home solar energy installation works.

First, sunlight hits a solar panel on the roof. The

...

What is a Solar Array?

A solar array, at its core, is a collection of multiple solar panels working together to produce electricity. But solar arrays are more than just a group of solar panels and there's a science behind their operation. When sunlight hits a panel's ...



Understanding What Solar Arrays Are

A solar array is a group of solar panels that work together to produce electricity. Each panel, or module, contains dozens of connected photovoltaic (PV) cells that absorb sunlight to generate energy. PV panels are ...



Solar Panel kWh Calculator: kWh Production Per Day, Month, Year

Here is the formula of how we compute solar panel output: $\text{Solar Output} = \text{Wattage} \times \text{Peak Sun Hours} \times 0.75$. Based on this solar panel output equation, we will explain how you can calculate ...



Contact Us

For catalog requests, pricing, or partnerships, please visit:
<https://ssab-proiect.eu>