

## European Solar and Energy Storage Solutions

# What is solar power grid connection



## Overview

---

A grid-connected solar system typically consists of solar panels, an inverter, disconnect switches, and an electric meter.

A grid-connected solar system typically consists of solar panels, an inverter, disconnect switches, and an electric meter.

Grid-connected solar systems allow you to generate electricity from solar panels and seamlessly integrate with the utility grid, enabling you to consume the energy you produce and feed excess power.

On-grid solar systems, also known as grid-tied or grid-connected systems, are connected directly to the local utility grid.

Solar systems integration involves developing technologies and tools that allow solar energy onto the electricity grid, while maintaining grid reliability, security, and efficiency.

Often referred to as a grid-tie or grid-connected system, an on-grid solar system is a system that is connected to the utility grid. What is a grid connected solar system?

Grid-connected solar systems refer to residences or businesses using solar panels to produce electricity while remaining connected to the utility grid. Excess energy generated by solar panels feeds back into the grid, supplying power to other users. 2. What is net metering in grid-connected solar systems?

.

Are solar panels connected to the grid?

Most solar panel installations throughout the U.S. are connected to the grid. With grid-tied systems, you can draw power from the power grid when your solar panel system isn't producing electricity.

What is a grid connected energy system?

A system connected to the utility grid is known as a grid-connected energy system or a grid-connected PV system. Through this grid-tied connection, the system can capture solar energy, transform it into electrical power, and supply it to the homes where various electronic devices can use it.

What is a grid tied solar panel system?

When grid-tied, your solar panel system is connected to the grid via a bi-directional electricity meter. It measures the excess power you send to the grid when your solar panels produce more than you need, and the amount of energy you pull from the grid when your solar panel system doesn't generate enough.

What is a grid-tied solar system?

With grid-tied systems, you can draw power from the power grid when your solar panel system isn't producing electricity. Additionally, you can supplement your energy needs with electricity from the grid when the sun is shining if you use more electricity than your solar panels produce.

How does a grid connected PV system work?

Through this grid-tied connection, the system can capture solar energy, transform it into electrical power, and supply it to the homes where various electronic devices can use it. When the grid connected PV system is installed on residential or commercial rooftops, it provides solar electricity to all the electrical ports and sockets.

## What is solar power grid connection

---



### Photovoltaic system

A grid-connected photovoltaic system, or grid-connected PV system is an electricity generating solar PV power system that is connected to the utility grid. A grid-connected PV system consists of solar panels, one or several inverters, a ...

### How A Solar Inverter Synchronizes With The Grid: Complete ...

The means that to make this happen entails the photovoltaic modules, wiring, and something to maintain the generated power in the home electrical panel that interfaces with the power ...



### Section 3: Grid-connected solar explained , solar.vic.gov

A solar inverter is a vital part of a grid-connect solar electricity system as it converts the DC current generated by your solar panels to the 230 volt AC current needed to run your ...



### How Solar Power And The Grid Work Together

The simple answer is that remaining connected

to the grid allows your home to draw additional power when solar panels can't generate enough electricity, including nights and cloudy days. At the same time, your home can ...

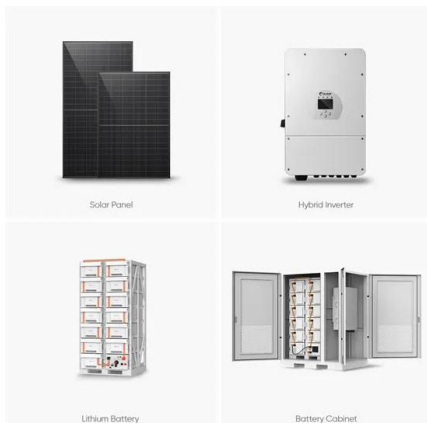


## How to Set Up a Grid Tie Solar System: A Comprehensive Step-by ...

In the simplest terms, a grid tie solar system, also known as a grid-connected or on-grid solar system, is a solar setup that is tied to -connected to- the traditional power grid. ...

## Calculations for a Grid-Connected Solar Energy System

electrical power. Solar energy systems have grown in popularity and are available for residential, agricultural, and commercial applications. Of the various types of solar photovoltaic systems, ...



## On-Grid Solar System: How It Works and Benefits

On-grid solar systems, also known as grid-tied or grid-connected systems, are connected directly to the local utility grid. This means that electricity generated by the solar panels can be used to power your home or ...

## Explainer: What Are Grid Interconnections And What Complicates ...

We need to modernize "the grid" for more renewable supply. But what is this grid, anyway? The continental-scale links binding electric networks make the difference between ...



## How to connect a PV solar system to the utility grid

There are two basic approaches to connecting a grid-tied solar panel system, as shown in the wiring diagrams below. The most common is a "LOAD SIDE" connection, made AFTER the main breaker. The alternative is a "LINE OR ...



## Grid-Connected Renewable Energy Systems

A grid-connected system allows you to power your home or small business with renewable energy during those periods (daily as well as seasonally) when the sun is shining, the water is running, or the wind is blowing.

## How to connect a PV solar system to the utility grid

There are two basic approaches to connecting a grid-tied solar panel system, as shown in the wiring diagrams below. The most common is a "LOAD SIDE" connection, made AFTER the main breaker. The alternative is a "LINE OR ...



## Solar Integration: Inverters and Grid Services Basics

Types of Inverters. There are several types of inverters that might be installed as part of a solar system. In a large-scale utility plant or mid-scale community solar project, every solar panel ...



## How to Connect Solar Panels to the Grid

There are two primary types of grid connection: supply-side connection, where solar panels connect directly to the electrical panel, and demand-side connection, where solar energy powers your home first with any excess energy exported ...



## What is Grid-Connected Solar and How Does it Work?

A grid-connected solar system is an arrangement where a solar power system is connected to the electrical grid of an area. This type of system generates electricity through solar panels and can be used for a variety of ...

## Solar Systems Integration Basics

However, systems like rooftop solar now require the grid to handle two-way electricity flow, as these systems can inject the excess power that they generate back into the grid. Power Electronics. Increased solar and DER on the ...





## Solar Integration: Distributed Energy Resources and Microgrids

Rooftop solar panels, backup batteries, and emergency diesel generators are examples of DER. While traditional generators are connected to the high-voltage transmission grid, DER are ...

## How to Connect Solar Panels to the National Grid , UKPower

How to connect solar panels to the National Grid. While it is possible to have a solar PV system that is not connected to the National Grid, choosing not to connect means missing out on ...

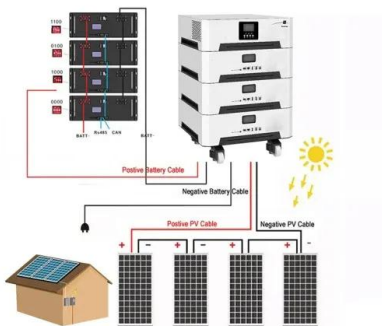


## Grid-Tied vs. Off-Grid Solar Systems , Paradise Energy

Grid-connected solar power has a distinct advantage over off-grid systems because net metering and other compensation methods from utility companies offer what is essentially free storage. ...

## On Grid Solar System: A Comprehensive Guide 101

An on-grid solar system, also known as a grid-tied or grid-connected solar system, is a renewable energy setup that connects directly to the public electricity grid. This innovative system allows homes and businesses to ...



## On Grid vs Off Grid Solar: A Power System Comparison

On-grid solar systems are connected to the utility grid, allowing constant electricity access and net metering benefits. On-grid solar power systems are connected to the grid and designed to generate electricity for ...

## Solar Integration: Inverters and Grid Services Basics

Types of Inverters. There are several types of inverters that might be installed as part of a solar system. In a large-scale utility plant or mid-scale community solar project, every solar panel might be attached to a single central inverter. String ...



## Contact Us

For catalog requests, pricing, or partnerships, please visit:  
<https://ssab-proiect.eu>