

European Solar and Energy Storage Solutions

What is the linear power of the photovoltaic panel



Overview

This optimal load characteristic is called the maximum power point (MPP). MPPT is the process of adjusting the load characteristic as the conditions change. Circuits can be designed to present optimal loads to the photovoltaic cells and then convert the voltage, current, or frequency to suit other devices or systems.

Maximum power point tracking (MPPT), or sometimes just power point tracking (PPT), is a technique used with variable power sources to maximize energy extraction as conditions vary. The technique is most

When directly connecting a load to cell, the operating point of the panel is rarely at peak power. The impedance seen by the panel determines its operating point. Setting the impedance correctly achieves peak power. Since panels are DC devices, transform.

Traditional perform MPPT for the entire array. In such systems the same current, dictated by the inverter, flows through all modules in the string (series). Because different modules have different I-V curves and different MPPs (due to manufacturing tolerance.

- Bialasiewicz, J.T. (July 2008). "Renewable Energy Systems With Photovoltaic Power Generators: Operation and Modeling". IEEE Transactions on Industrial Electronics. 55 (7): 2752–2758. . . .

have a complex relationship between their operating environment and the they produce. The nonlinear characteristic of a given cell in specific temperature and insolation conditions can be functionally characterized by a .

Controllers can follow several strategies to optimize power output. MPPTs may switch among multiple algorithms as conditions dictate. Perturb and observeIn this method the controller adjusts the voltage from the array by.

At night, an off- PV system may use batteries to supply loads. Although the fully charged battery pack voltage may be close to the PV panel's MPP voltage, this is unlikely to be true at sunrise when the battery is partially discharged. Charging may begin at a voltage.

For simple geometrical reasons, one expects the solar power produced to be linearly proportional to the cosine of the incidence angle of the Sun's light on the panels.

For simple geometrical reasons, one expects the solar power produced to be linearly proportional to the cosine of the incidence angle of the Sun's light on the panels.

This optimal load characteristic is called the maximum power point (MPP). MPPT is the process of adjusting the load characteristic as the conditions change. Circuits can be designed to present optimal loads to the photovoltaic cells and then convert the voltage, current, or frequency to suit other devices or systems.

PV cells are manufactured as modules for use in installations. Electrically the important parameters for determining the correct installation and performance are: Maximum Power - this is the maximum power output of the PV module (see I-V curve below) Open circuit voltage - the output voltage of the PV cell with no load current flowing.

maximum power point values, short-circuit current and open-circuit voltage across a range of irradiation levels and cell temperatures. The versatility of the model lies in its accurate prediction of the aforementioned criteria for panels of different types, including monocrystalline and polycrystalline silicon.

PV cells are electrically connected in a packaged, weather-tight PV panel (sometimes called a module). PV panels vary in size and in the amount of electricity they can produce. Electricity-generating capacity for PV panels increases with the number of cells in the panel or in the surface area of the panel. What is a photovoltaic cell (PV)?

Photovoltaic cells (PV) are tools used for the effective and sustainable conversion of the abundant and radiant light energy from the sun into electrical energy [4, 5, 6, 7, 8]. In its basic form, a PV is an interconnection of multiple solar cells aimed at achieving maximum energy output (see Figure 1).

What is a PV panel?

PV cells are electrically connected in a packaged, weather-tight PV panel (sometimes called a module). PV panels vary in size and in the amount of electricity they can produce. Electricity-generating capacity for PV panels increases with the number of cells in the panel or in the surface area of the

panel.

How does photovoltaic (PV) technology work?

Photovoltaic (PV) materials and devices convert sunlight into electrical energy. What is photovoltaic (PV) technology and how does it work?

PV materials and devices convert sunlight into electrical energy. A single PV device is known as a cell. An individual PV cell is usually small, typically producing about 1 or 2 watts of power.

How efficient is a solar PV system?

Experimental PV cells and PV cells for niche markets, such as space satellites, have achieved nearly 50% efficiency. When the sun is shining, PV systems can generate electricity to directly power devices such as water pumps or supply electric power grids.

How many PV panels are in a PV array?

A PV array can be composed of as few as two PV panels to hundreds of PV panels. The number of PV panels connected in a PV array determines the amount of electricity the array can generate. PV cells generate direct current (DC) electricity. DC electricity can be used to charge batteries that power devices that use DC electricity.

What is power/voltage-curve of a partially shaded PV system?

Power/Voltage-curve of a partially shaded PV system, with marked local and global MPP Maximum power point tracking (MPPT), or sometimes just power point tracking (PPT), is a technique used with variable power sources to maximize energy extraction as conditions vary .

What is the linear power of the photovoltaic panel



Characteristic I-V and P-V curves of a solar panel.

Maximum Power Point Tracking (MPPT) is a means to extract maximum energy from PV panels at different levels of irradiance. This paper examines some of the MPPT techniques used in PV applications

Solar Performance and Efficiency , Department of Energy

The conversion efficiency of a photovoltaic (PV) cell, or solar cell, is the percentage of the solar energy shining on a PV device that is converted into usable electricity. Improving this conversion efficiency is a key goal of ...



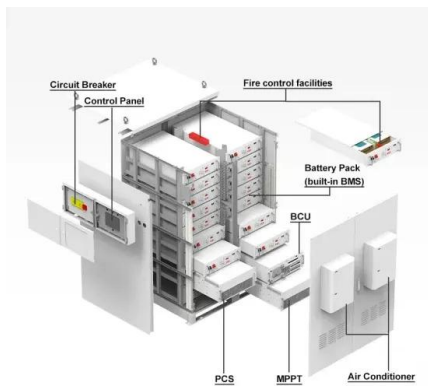
Photovoltaic Efficiency: Solar Angles & Tracking Systems

of PV panels by following the sun through the sky. Real-World Applications . With PV solar power becoming popular in many different applications, more engineers are needed who understand ...

Solar Panel Degradation: What Is It and Why Should ...

This stress can cause solar panel degradation

due to back-sheet failure and produce partial power losses or compromise the PV module components. To reduce solar panel degradation caused by cracking on the ...



Understanding the Voltage - Current (I-V) Curve of a Solar Cell

The operating point (I, V) corresponds to a point on the power-voltage (P-V) curve, For generating the highest power output at a given irradiance and temperature, the operating point should ...

Solar Photovoltaic Technology Basics

To boost the power output of PV cells, they are connected together in chains to form larger units known as modules or panels. Modules can be used individually, or several can be connected to form arrays. One or more arrays is then ...

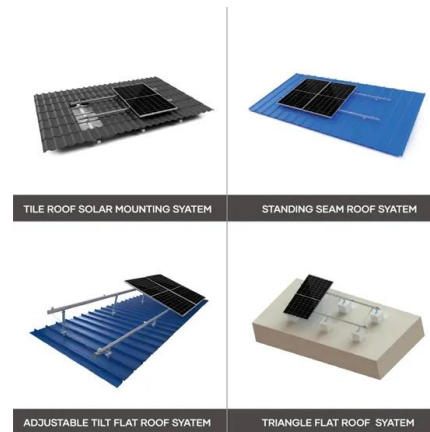


How Long Do Solar Panels Last? Solar Panel Degradation Explained

While deciding if solar is right for you, it's important you understand your solar panel's life expectancy. In this blog, we'll discuss how long solar panels last, solar panel efficiency over ...

How Long Do Solar Panels Last? Solar Panel ...

While deciding if solar is right for you, it's important you understand your solar panel's life expectancy. In this blog, we'll discuss how long solar panels last, solar panel efficiency over time, and what you can do to prevent solar panel ...

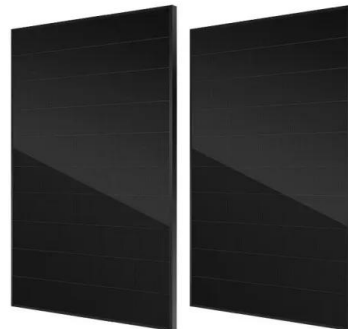


Measuring the temperature coefficient of a PV ...

As we all know, the smooth performance of a solar PV module is strongly geared to the factor temperature. Higher than standard conditions temperatures can actually mean losses in maximum output power which is ...

What is Concentrated Solar Power and how does CSP ...

Learn more about what concentrated solar power is, including how it works, how it's used, its advantages & drawbacks and how it differs from solar PV. Linear fresnel systems: Solar PV efficiencies are similar to ...



Difference Between Solar And Photovoltaic

Solar power is a clean and renewable energy source that can help reduce dependence on fossil fuels and lower greenhouse gas emissions. The lifespan of a typical solar panel can vary depending on several factors such as the ...



Photovoltaic Efficiency: Solar Angles & Tracking Systems

The energy output of a PV panel changes based on the angle between the panel and the sun. The angle at which the sun hits a PV panel determines its efficiency and is what engineers use ...



- LIQUID/AIR COOLING
- ON GRID/HYBRID
- PROTECTION IP54/IP55
- BATTERY /6000 CYCLES



What is Concentrated Solar Power (CSP)?

Current applications of CSP are at the utility scale - large power plants that cost millions (or billions) of dollars to build and that can power thousands of homes. Furthermore, CSP technologies are considered an expensive option when ...

Solar inverters: pros and cons of string inverters vs. microinverters

The optimizers can then regulate voltage before the power gets sent to the string inverter, maximize the amount of energy the system produces, and reduce the impacts of shading. ...



Contact Us

For catalog requests, pricing, or partnerships, please visit:
<https://ssab-proiect.eu>