

## European Solar and Energy Storage Solutions

# What is the slope of the photovoltaic panel column



Application scenarios of energy storage battery products

## Overview

---

The tilt angle for solar panels varies specific to your location latitude, season, and time of day. Typically, an optimal angle sits between 30° and 45°. To maximize the energy conversion efficiency, use proper mount brackets, and adjust the angles and orientation in accordance with time of year and day.

The tilt angle for solar panels varies specific to your location latitude, season, and time of day. Typically, an optimal angle sits between 30° and 45°. To maximize the energy conversion efficiency, use proper mount brackets, and adjust the angles and orientation in accordance with time of year and day.

The optimal tilt angle of photovoltaic solar panels is that the surface of the solar panel faces the Sun perpendicularly. However, the angle of incidence of solar radiation varies during the day and during different times of the year.

Calculating the Optimal solar panel Angle. As a rule of thumb, solar panels should be more vertical during winter to gain most of the low winter sun, and more tilted during summer to maximize the output. Here are two simple methods for calculating approximate solar panel angle according to your latitude.

Solar Panel Orientation calculator. Select your timezone and enter your coordinates (latitude and longitude) to calculate the optimal orientation for fixed solar panels, twice adjusted solar panels, quarterly (seasonally) adjusted solar panels, and monthly adjusted solar panels. You can find your coordinates from Google Search.

A general rule for optimal annual energy production is to set the solar panel tilt angle equal to the geographical latitude. For example, if the location of the solar array is at 50o latitude, the optimal tilt angle is also 50o. Essentially, the closer a solar panel is located to the equator the more the panel should be pointing straight up. What is the optimal tilt angle of photovoltaic solar panels?

The optimal tilt angle of photovoltaic solar panels is that the surface of the solar panel faces the Sun perpendicularly. However, the angle of incidence of solar radiation varies during the day and during different times of the year.

What is a solar panel angle?

**Solar Panel Angle** The solar panel angle, also known as inclination, refers to the vertical tilt angle between the surface of the solar panel and the ground. As the sun movement varies both geographically and seasonally, you need to adjust solar panel angles specific to the latitude, season, and time of day to maximize the power output.

Which factor determines the tilt angle of solar panels?

The second factor, the tilt angle, is decided by the elevation angle of the sun, i.e., at what altitude the sun is. If the sun is high in altitude, then the tilt angle would be small and solar panels would be more horizontal. For low altitudes, the tilt angle is large, and solar panels are vertical.

Should solar panels be vertical or tilted during winter?

As a rule of thumb, solar panels should be more vertical during winter to gain most of the low winter sun, and more tilted during summer to maximize the output. Here are two simple methods for calculating approximate solar panel angle according to your latitude.

What is the Best Direction and angle for solar panels?

What's the best direction and angle for solar panels?

For maximum output, the sweet spot for solar panels in the continental U.S. is facing roughly south and tilted between 15 and 40 degrees, according to the Department of Energy.

What is the ideal inclination of photovoltaic panels?

The ideal inclination of the photovoltaic panels depends on the latitude in which we are, the time of year in which you want to use it, and whether or not you have your own generator set. In winter, the optimum angle is close to 50°, and in summer, the ideal angle is around 15 degrees. However, some conditions can alter this premise.

## What is the slope of the photovoltaic panel column

---

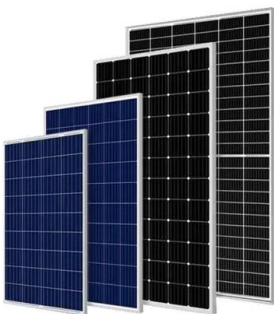


### Calculate the best slope angle of photovoltaic panels theoretically ...

The preeminent slope angle of solar panels is an important determinant of falling solar radiation on the surface of photovoltaic panels. Characteristics of the position of ...

### Calculate the best slope angle of photovoltaic panels ...

reduces the solar panel's efficiency (Karal et al. 2016). Kaddoura et al. studied best slope angles of PV panels for several towns in the Kingdom of Saudi Arabia. They obtained data of horizontal ...



### Solar Mounting System Guide: Racking Matters

There are two major kinds of pole mounts, "top-of-pole" and "side-of-pole". The former allows the solar panel to sit on top of a pole, elevated several feet off the ground. The latter anchors solar ...

### How to Find the Best Orientation and Angle of Solar

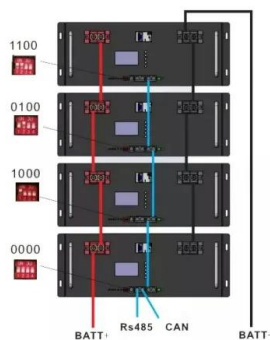
...

??4%??· The tilt angle for solar panels varies specific to your location latitude, season, and time of day. Typically, an optimal angle sits between 30° and 45°. To maximize the energy conversion efficiency, use ...



## Optimization and comparison analysis for application of PV panels ...

In recent years, research about the application and optimization of PV panels has grown rapidly. Especially for stand-alone solar systems there have been some problems related to first ...



## What's the Best Angle for Solar Panels? , EnergySage

For maximum output, the sweet spot for solar panels in the continental U.S. is facing roughly south and tilted between 15 and 40 degrees, according to the Department of Energy. That keeps the panels in the sun ...



## Solar Panel Orientation Calculator

Solar Panel Orientation calculator. Select your timezone and enter your coordinates (latitude and longitude) to calculate the optimal orientation for fixed solar panels, twice adjusted solar panels, quarterly (seasonally) ...



## Solar panel orientation: How using East-West ...

A general rule for optimal annual energy production is to set the solar panel tilt angle equal to the geographical latitude. For example, if the location of the solar array is at 50o latitude, the optimal tilt angle is also 50o. ...



## A methodology for an optimal design of ground-mounted photovoltaic ...

Photovoltaic (PV) systems and concentrated solar power are two solar energy applications to produce electricity on a large-scale. The photovoltaic technology is an evolved ...

## Slope, pitch, gradient of a roof or solar panels (calculator and ...

Free calculator online of the slope or pitch of a roof or photovoltaic solar panels. Use the length and rise of the roof to find the slope, or enter the slope and the run length to get the tilted length.



## Best Angle for Solar Panels: It's Not Your Latitude

1. Our Solar Panel Tilt Angle Calculator. Because the research paper's formulas offer a slight improvement over latitude, a friend and I decided to code a free solar panel angle calculator that uses the formulas to calculate the ...



## Solar Panels on Sloped Roof

Uniform dead load for solar panels is calculated as weight of panel (plus weight of rails under panel) divided by area of panel. Typical value is 3 pounds per square foot (psf). However, load from solar panels must be considered point loads

...



## Types of Mounting Structures for Solar Panels

Solar panel mounting structures must be durable and capable of withstanding the test of time. Given that solar installations are long-term investments, the mounting structures must be robust enough to last for ...



## What's the Best Angle for Solar Panels to Get ...

Factors that affect solar panel angle Latitude. As we've mentioned earlier, your location's latitude plays a major part in determining the best solar panel angle. Across the continental U.S., the optimal tilt can range ...



## Contact Us

---

For catalog requests, pricing, or partnerships, please visit:  
<https://ssab-proiect.eu>