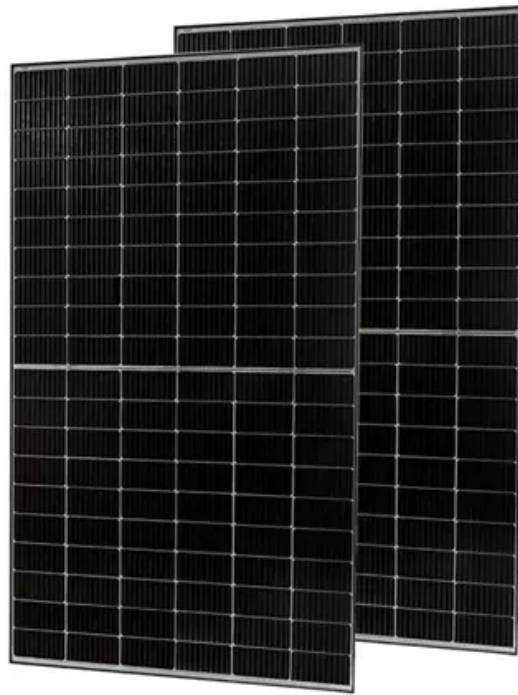


European Solar and Energy Storage Solutions

What size photovoltaic panel is best for home use



Overview

When you look at a solar panel, you'll see it's made up of small squares. Those squares are called solar cells, and they're the part of the panels that turn sunlight into electricity. You'll see the size of a solar panel described by how many cells it has. 60-cell panels are usually laid out in a 6 by 10 grid and are the most.

Many people want to know the physical size of solar panels, not just how many cells they hold. The average 60-cell solar panel is about 65 inches by 39 inches, or 5.4 feet by 3.25 feet, and.

“How many solar panels do I need to power my home?

”; the age-old question with absolutely no easy answer. Based on the US average energy.

There are many factors that you should consider before the size of your solar panels, like solar panel efficiency and solar panel warranties.

Once solar panels are installed on your roof, you don't have to think much about their size anymore. But, with portable off-grid panels, solar panel size is one of the most important things to.

Solar panels for residential use have dimensions around 65 inches by 39 inches, occupying approximately 17.5 square feet.

Solar panels for residential use have dimensions around 65 inches by 39 inches, occupying approximately 17.5 square feet.

60-cell solar panels are the standard solar panel size for homes. They are usually 5.5 feet by 3 feet and weigh around 40 pounds. What size solar panels do I Need?

60-cell solar panels are the standard solar panel size for homes. They are usually 5.5 feet by 3 feet and weigh around 40 pounds. 72-cell panels are bigger, measuring around 6.5 feet by 3 feet, weigh about 50 pounds, and are typically considered commercial solar panels.

How big are solar panels for residential use?

Armed with this knowledge, you'll be able to make informed decisions that maximize your solar investment while minimizing your environmental impact. Let's power up your solar journey together. Solar panels for residential use have dimensions around 65 inches by 39 inches, occupying approximately 17.5 square feet.

How big are solar panels?

Residential solar panels consist of around 60 solar cells and are roughly 5.5 feet long and 3 feet wide. Solar panels usually weigh about 40 to 50 pounds. Commercial solar panels are generally larger than residential solar panels at 6.5 feet by 3 feet.

How do I determine the appropriate size of solar panels?

To determine the size (wattage) of solar panels you need, consider several factors: your current energy use, the amount of sunlight in your area, the efficiency of the solar panels, average solar energy requirements, and the physical size of the solar panels. Let's delve into each of these factors.

Are all solar panels the same size?

If solar panels contain different numbers of solar cells, then they aren't all the same size. As a general rule, the more solar cells a solar panel has, the bigger the size. Sixty-cell panels are usually smaller than seventy-two-cell solar panels. But things get a bit more complicated when we look at the efficiency of solar cells.

What should I consider when choosing solar panels?

When choosing solar panels, the physical size is an important consideration, especially if you have limited roof space or specific installation requirements. Solar panels come in different sizes, so it's essential to measure the available space accurately and consider any obstructions such as chimneys or vents.

What size photovoltaic panel is best for home use



The 6 types of solar panels , What's the best type? [2024]

5 ???· The most efficient commercially available solar panel is a monocrystalline solar panel, which has an average efficiency rating of 18-24%. Perovskite solar panels have been known ...

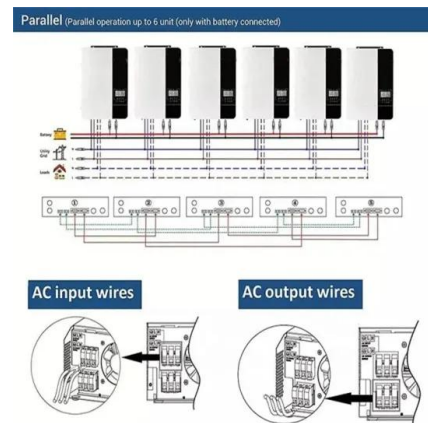


Standard Solar Panel Sizes And Wattages (100W ...

96-cell solar panel size. The dimensions of 96-cell

Solar inverter sizing: Choose the right size inverter

A microinverter is a device that converts the DC output of solar modules into AC that can be used by the home. As the name suggests, they are smaller than the typical solar power inverter, ...



Solar Panel Size And Weight: A Comprehensive Guide - ...

Learn all about solar panel dimensions and weight in this comprehensive guide. Get expert advice on improvements to your home, including design tips, how much you'd expect to pay for a pro and

solar panels are as follows: 41.5 inches long, and 63 inches wide. That's a 63×41.5 solar panel. This form is a bit shorter but wider. This is the typical classification of solar panel sizes ...



Solar Panel Size Guide: Which Size Of Solar Panel Is Best?

6 ???· Which size of the solar panel is best, sixty or 72 inches? There isn't much to choose between the two standard sizes of solar panels. The main thing that will affect your decision to go for 60-inch or 72-inch panels is how they fit ...

Comprehensive Guide To Accurately Sizing Your Solar ...

Understanding Solar Panel Dimensions. Solar panels for residential use have dimensions around 65 inches by 39 inches, occupying approximately 17.5 square feet. These dimensions vary based on the manufacturer, wattage, and ...



Solar System Size Calculator: How Much Solar Do I ...

To convert kilowatts to watts, simply multiply kilowatts by 1,000. (I'll use the solar system size we calculated in the previous section.) $3 \text{ kW} \times 1,000 = 3,000 \text{ W}$. 3. Divide your solar system size (in W) by your desired panel ...

How big are solar panels? Solar panel size and weight

Solar panel size varies from brand to brand, but you can expect your residential panels to measure around 5.5 feet by 3 feet and weigh about 40 to 50 pounds. Commercial solar panels tend to be about a foot longer than ...



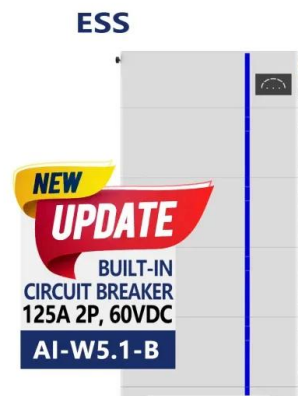
Solar Panel Size & Weight Guide [+ Charts] - Solartap

Most solar panels are a little over 5 feet by 3 feet and weigh 40-45 pounds, but size varies by manufacturer. In this guide, we'll unpack solar panel size in greater detail, helping you determine how large of a system your ...

What's the Average Household Solar System Size?

Production of solar panels is measured in watts (1,000 watts = 1 KW). The average wattage in panels we currently use is 400 watts.

$10,400\text{kWh} / 1.5 / 400\text{w} = 17.33$ Panels. To cover 100% of your usage you would need at least 17 ...



Guide to Solar Panel Sizes & Dimensions (November ...

Discover which solar panel sizes and dimensions are the most common in the UK, as well as which size is the best for your home. 0330 818 7480. Become a Partner. Menu. Solar Panels Heat Pumps. Boilers. Windows. ...



Contact Us

For catalog requests, pricing, or partnerships, please visit:
<https://ssab-project.eu>