

## European Solar and Energy Storage Solutions

# Which photovoltaic anti-reverse inverter is better



## Overview

---

RPR are the cheapest solution, but also the most unreliable solution for reverse power protection in a grid-connected solar power plant. Mini PLC is somewhat better than RPR but still, the ROI of the solar plant will be too much higher than you expected .

RPR are the cheapest solution, but also the most unreliable solution for reverse power protection in a grid-connected solar power plant. Mini PLC is somewhat better than RPR but still, the ROI of the solar plant will be too much higher than you expected .

In this review, the global status of the PV market, classification of the PV system, configurations of the grid-connected PV inverter, classification of various inverter types, and topologies are discussed, described and presented in a schematic manner.

This article will overview perhaps the most essential components in a PV system, inverters, and compare the two main options dominating today's utility-scale market: central and string inverters. What are central and string inverters?

There are three primary tiers of PV inverters: microinverters, string inverters, and central inverters.

The different types of PV inverter topologies for central, string, multi-string, and micro architectures are reviewed. These PV inverters are further classified and analysed by a number of conversion stages, presence of transformer, and type of decoupling capacitor used.

Inverter voltage control techniques have been developed to provide effective voltage control and support higher penetration integration of PV generation. In this paper, the common Volt-VAR control, PF (P) and Q (U) control of photovoltaic inverter methods are detailed compared. Which inverter is best for solar PV system?

To handle high/medium voltage and/or power solar PV system MLIs would be

the best choice. Two-stage inverters or single-stage inverters with medium power handling capability are best suited for string configuration. The multi-string concept seems to be more apparent if several strings are to be connected to the grid.

What are the different types of PV inverters?

There are three primary tiers of PV inverters: microinverters, string inverters, and central inverters. Since microinverters are not rated for utility-scale voltages, we will largely ignore them in this article. String inverters convert DC power from “strings” of PV modules to AC and are designed to be modular and scalable.

Should PV inverter topologies be side-stepped?

This paper has presented a detailed review of different PV inverter topologies for PV system architectures and concluded as: except if high voltage is available at input single-stage centralised inverters should be side-stepped, to avoid further voltage amplification.

Can a PV inverter integrate with the current power grid?

By using a reliable method, a cost-effective system has to be developed to integrate PV systems with the present power grid . Using next-generation semiconductor devices made of silicon carbide (SiC), efficiencies for PV inverters of over 99% are reported .

What is a safety feature of a PV inverter?

Islanding is the process in which the PV system continues to supply power to the local load even though the power grid is cutoff . A safety feature is to detect islanding condition and disable PV inverters to get rid of the hazardous conditions. The function of inverter is commonly referred to as the anti-islanding.

Will PV inverters increase in 2021 & 2022?

The PV inverters are expected to increase at a 4.64 rate by 2021 and 2022 to meet a target of about 100 GW. The markets are showing many favourable conditions by announcing expansion plans. The main postulate of a central PV system architecture lies in its easy increment of power rating.

## Which photovoltaic anti-reverse inverter is better

---



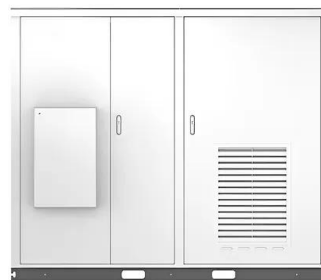
### Photovoltaic inverters for commercial systems

The difference between residential and commercial inverters is the size, which defines the range of use of the inverter itself. Commercial inverters are usually defined as inverters with a power greater than 10kW.. ...

### Application of Anti-Reverse Circuit in Solar System

Since the inverter has an anti-reverse connection circuit, the anti-reverse diode in the circuit should be short-circuited with a copper wire. Record the waveforms of the voltage across the ...

Solar



### Critical review on various inverter topologies for PV ...

The different types of PV inverter topologies for central, string, multi-string, and micro architectures are reviewed. These PV inverters are further classified and analysed by a number of conversion stages, presence of ...

### Passive anti-Islanding protection for Three-Phase Grid-Connected

The PV inverters design is influenced by the grid requirements, including the anti-islanding requirement which is the most challenging [2], [3]. Developing sensitive and reliable ...



## Transformerless Inverter Topologies for Single-Phase ...

In photovoltaic (PV) applications, a transformer is often used to provide galvanic isolation and voltage ratio transformations between input and output. However, these conventional iron and copper



## A review on modulation techniques of Quasi-Z-source inverter for ...

Additionally, ZSI can reliably work with a wide range of DC input voltage generated from PV sources. So, ZSIs are widely implemented for distributed generation systems and electric ...



Deye Official Store

10 years warranty

## Comparing Central vs String Inverters for Utility-Scale ...

This article will overview perhaps the most essential components in a PV system, inverters, and compare the two main options dominating today's utility-scale market: central and string inverters. What are ...



## A potential induced degradation suppression method for photovoltaic ...

At the system level, apply power electronic converter technology to reduce PID (Luo et al., 2016). Based on their topologies, PV inverters are broadly classified into two types: ...

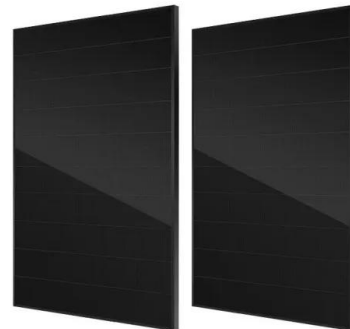


## Inverter Protection and Ride-Through: Today's Photovoltaic and ...

Modern grid-tied photovoltaic (PV) and energy storage inverters are designed with control capabilities that can support and/or enhance the existing global grid infrastructure. ...

## Best Solar Inverters Review: SolarEdge, Enphase, And ...

Some of the best available inverters come from Enphase, SolarEdge, and Tesla. The main types of inverters are string inverters, optimized string inverters, and microinverters. The best inverter for you depends on ...



## (PDF) Critical review on various inverter topologies for PV system

The different types of PV inverter topologies for central, string, multi-string, and micro architectures are reviewed. These PV inverters are further classified and analysed by a ...



## What is DC PV Solar Combiner Box

It is finally converted into alternating current by a PV inverter for grid connection or supplying other AC loads. Therefore, the electricity handled by the solar combiner box is direct current, not alternating current. which does ...

**FLEXIBLE SETTING OF  
MULTIPLE WORKING MODES**



## Contact Us

---

For catalog requests, pricing, or partnerships, please visit:  
<https://ssab-proiect.eu>