

European Solar and Energy Storage Solutions

Which process is best for generating wind blades



Overview

A wind turbine turns wind energy into electricity using the aerodynamic force from the rotor blades, which work like an airplane wing or helicopter rotor blade. When wind flows across the blade, the air pressure on one side of the blade decreases.

A wind turbine turns wind energy into electricity using the aerodynamic force from the rotor blades, which work like an airplane wing or helicopter rotor blade. When wind flows across the blade, the air pressure on one side of the blade decreases.

A wind turbine turns wind energy into electricity using the aerodynamic force from the rotor blades, which work like an airplane wing or helicopter rotor blade. When wind flows across the blade, the air pressure on one side of the blade decreases.

Let's simplify the complex process of making a wind turbine blade by thinking about it like a sandwich. We start with the bread, a large blade-shaped mold filled with dry fibers.

The majority of wind turbines consist of three blades mounted to a tower made from tubular steel. There are less common varieties with two blades, or with concrete or steel lattice towers. At 100 feet or more above the ground, the tower allows the turbine to take advantage of faster wind speeds found at higher altitudes.

The lift generated as wind passes over the blade causes it to move, thereby rotating the main shaft. The rotation is transmitted through a gearbox to a generator, which converts it into electricity. The magnitudes of the lift and drag on the turbine blade are dependent on the angle of attack between the apparent wind direction and the chord . Do wind turbine blades capture wind energy?

A well-designed wind turbine blade can greatly increase a wind turbine's energy production while lowering maintenance and operating expenses. This essay will provide an overview of wind energy's significance as well as the

function of wind turbine blades in capturing wind energy.

Why are wind turbine blades important?

The wind blades of a turbine are the most important component because they catch the kinetic energy of the wind and transform it into rotational energy. Wind turbine blades appear in a range of shapes and sizes, and their construction is crucial to the turbine's efficiency and performance.

How does a wind turbine work?

At 100 feet or more above the ground, the tower allows the turbine to take advantage of faster wind speeds found at higher altitudes. Turbines catch the wind's energy with their propeller-like blades, which act much like an airplane wing. When the wind blows, a pocket of low-pressure air forms on one side of the blade.

How is wind used to produce electricity?

Wind is used to produce electricity by converting the kinetic energy of air in motion into electricity. In modern wind turbines, wind rotates the rotor blades, which convert kinetic energy into rotational energy. This rotational energy is transferred by a shaft which to the generator, thereby producing electrical energy.

How do wind turbine blades produce electricity?

This pressure differential generates a force that causes the blade to rotate around its axis, which is then used to produce electricity. Wind turbine blade shape is an important element in efficiency. Larger surface area blades can catch more wind energy and produce more electricity, but they are also slower and less efficient.

What is a wind turbine blade?

Wind turbine blades appear in a range of shapes and sizes, and their construction is crucial to the turbine's efficiency and performance. A well-designed wind turbine blade can greatly increase a wind turbine's energy production while lowering maintenance and operating expenses.

Which process is best for generating wind blades



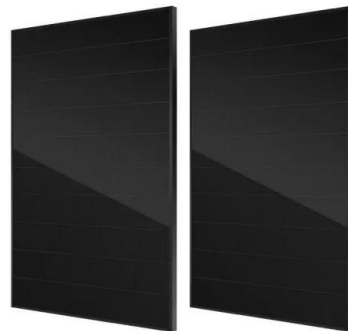
Wind explained Electricity generation from wind

How wind turbines work. Wind turbines use blades to collect the wind's kinetic energy. Wind flows over the blades creating lift (similar to the effect on airplane wings), which causes the blades ...

Aero-Structural Design Optimization of Wind Turbine

...

Wind turbines are key components in wind energy systems, and their performance is critical for efficient power generation. Wind turbine blades are the most critical components as they interact



Wind explained Electricity generation from wind

Wind turbines use blades to collect the wind's kinetic energy. Wind flows over the blades creating lift (similar to the effect on airplane wings), which causes the blades to turn. The blades are ...

Wind Turbine Blade Technology: Designing for Efficiency

Wind turbine blades are the primary components responsible for capturing wind energy and converting it into mechanical power, which is then transformed into electrical energy through a generator. The fundamental goal of blade design is ...



Blade Types for Wind Turbine Users , The Complete ...

Since the air coming off the blade is moving a bit faster than the air flowing into the blade, each blade is able to generate RPMs and power in its turn. The pitch of your turbine blades--the angle of the blade's windward edge--is a key factor ...

The Science Behind Wind Blades and How They Work

Designing Wind Blades. Wind turbine blade design is a complicated procedure that combines engineering, aerodynamics, and materials science. The design method starts with determining the wind turbine's ...



Repurposing and Recycling Wind Turbine Blades in the ...

position of the wind blades must be identified.7
1.1 , Structure of a blade A wind blade structure is typically composed of three major parts: the aerodynamic shell (laminate), the internal spar ...

How Do Wind Turbines Work? , Department of Energy

A wind turbine turns wind energy into electricity using the aerodynamic force from the rotor blades, which work like an airplane wing or helicopter rotor blade. When wind flows across the blade, the air pressure on one side of the blade decreases.



(PDF) Multi-Objective Optimization of a Small Horizontal-Axis Wind

Generating a high startup torque is a critical factor for the application of small wind turbines in regions with low wind speed. In the present study, the blades of a small wind ...

Contact Us

For catalog requests, pricing, or partnerships, please visit:
<https://ssab-proiect.eu>