

## European Solar and Energy Storage Solutions

# Why can't photovoltaic panel lights be placed flat



## Overview

---

Yes, you can successfully install solar panels on the flat roof of your home or business. However, there are some challenges to be aware of. Flat roofs have a minimal slope allowance that will accommodate solar PV panel systems. A roof having a rise of 0.25 inches over a 12-inch run — known as a 0.25:12 pitch roof — is.

The key to a successful flat roof installation is identifying obstacles early in the process. Here are some structures to consider before installing solar panels on a flat roof: 1. Drains 2. Vents 3. Exhaust fans 4. Rooftop units 5.

As we've mentioned throughout the article, the key to successfully installing solar panels on a flat roof is finding an experienced and reputable installer to do it. Solar.com is a free online marketplace offering potential the best.

Solar panels should not be flat because they can collect water, which will build up on the surface and damage the solar cells.

Solar panels should not be flat because they can collect water, which will build up on the surface and damage the solar cells.

Solar panels on flat roofs may require frequent cleaning. Solar panels on a standard pitched roof tend to clean themselves when precipitation washes down them. In fact, just a slight degree of tilt - 3 to 4 degrees - can help keep solar panels clean when it rains.

There are advantages and disadvantages to installing solar panels completely parallel to a flat roof vs tilting them up. But the cons outweigh the pros, therefore our best advice for most circumstances is to install solar panels with a tilt of at least 10 degrees from horizontal. Let's find out why.

Yes, you can install solar panels flat, but they will experience a degree of energy loss without the slightest inclination towards the sunlight. Although it certainly is advantageous to have a roof that is inclined in the sun's direction, a flat surface will also do.

When solar panels are installed flat to the ground with no trackers, they are not tilted to the optimal angle to absorb the most sunlight throughout the day.

This means flat panel systems operate at lower efficiencies and generate less electricity than conventional systems that use trackers or tilted fixed structures to point the surface of . Can solar panels be tilted on a flat roof?

When installing solar panels on your flat roof, the resulting product can be tilted or not. There two main factors in the design of a successful solar panel system generating maximum electricity: An optimum tilt angle and orientation of your solar panels on a flat roof will ensure top energy production performance of your system.

Should solar panels be installed parallel to a flat roof?

There are advantages and disadvantages to installing solar panels completely parallel to a flat roof vs tilting them up. But the cons outweigh the pros, therefore our best advice for most circumstances is to install solar panels with a tilt of at least 10 degrees from horizontal. Let's find out why.

Does a flat roof affect solar panels?

Dirt build-up. When solar panels are at an angle, dirt can slide off them, or at least wash off when it rains. With a flat roof, dirt will build up much more easily. The dirt blocks the sun, lowering your solar panel system's production. No warranty coverage.

Are flat solar panels better than tilted solar panels?

On the other hand, flat solar panels can be an advantage to those who need more solar power during the summer months, December through to February. However, they will produce less power in winter months. More commonly, people want a more consistent flow of generation all year round which is what you'll get from tilted solar panels.

Are flat solar panels a good option for utility-scale solar projects?

While flat PV panels can be installed at a lower cost and with lower degradation rates, there are disadvantages to consider for utility-scale solar projects. When solar panels are installed flat to the ground with no trackers, they are not tilted to the optimal angle to absorb the most sunlight throughout the day.

Are flat panels better than ground-mounted solar panels?

Installing flat panels rather than ground-mounted systems has significant

advantages for solar project developers. Without the need for groundwork and foundations to be laid — nor the need for complex moving parts such as motors and gears in tracking systems — solar plants using flat panels can be installed at a lower cost than conventional panels.

## Why can't photovoltaic panel lights be placed flat

---



### Solar Panels for Apartments: A Complete Guide

However, renters and apartment owners generally can't install permanent solar panel systems on their building's shared roof. The good news is that just because you live in an apartment doesn't mean you can't benefit from ...

### 24+ Types of Modern Solar Lights: Uses, Benefits and Guide

As long as you live in a place where there is sunlight, there is absolutely no reason why you can't use solar lights the entire time and produce energy out of them. Cost-effectiveness: The ...



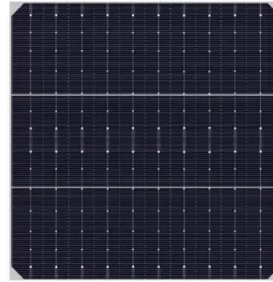
### Horizontal, flat solar panels vs tilted solar arrays

Solar panel tilt angle and orientation are two of the most important factors in determining how much electricity your solar panel array will generate. But what should you do if you have a flat roof? Is it ever worth it to ...

### Tilt vs. flat-mount PV: does it really matter?

As the map below illustrates, the answer is

typically yes, but to varying degrees. This 'Energy Gains' map depicts how tilting solar panels 30 degrees, as compared to positioning panels horizontally, positively impacted ...

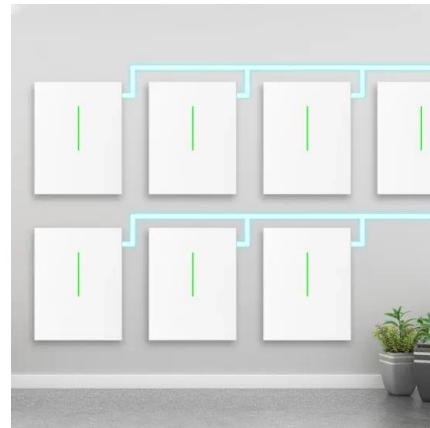


## Solar Panels For Flat Roofs: Are They Right for You?

These mounts tilt your solar panels, exposing them to the sun for as much of the day as possible. The extra equipment typically results in a higher price tag for flat-roof solar panel systems. Why flat roof installations are ...

## Solar Panels on Flat Roof: What You Need to Know

Is a solar panel installation more difficult on a flat roof? Not necessarily! There are some things to consider when installing a solar power plant on your flat roof. Is it possible to combine battery ...



## Balancing Solar Energy Generation and Pilot Safety at Airports

For solar panels not placed on flat roofs, the opportunities for layout optimisation can be limited by the direction and tilt of the rooftop itself. Finally, as the study notes, airports ...

## Do solar panels need to be slanted at an angle or can they be placed flat?

Solar panels can be placed both at an angle or flat. The ideal angle for a solar panel depends on the location of your home and the amount of sunlight it receives throughout the year. However, ...

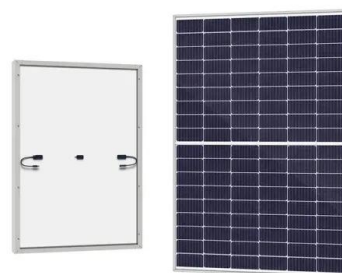


## Solar Panels For Flat Roofs: Are They Right for You?

We'll explain why flat roof solar installations are still worth it and how you can recover some of these costs as extra savings on your electric bills. It's all about the flexibility flat roofs give you in terms of solar panel orientation ...

## The Ultimate Guide To Flat Roof Solar Panels

When installing Solar panels on a flat roof, this is easily achieved. As the Solar Panels are installed onto a bracket which tilts the panel to around 30 degrees. Flat Roof Solar panels are usually mounted onto a tub, ...



## Can Solar Panels Be Installed Flat?

While installing photovoltaic (PV) shingles requires a minimum slope of 2:12, solar panels can indeed be installed flat on such a roof--as long as a slight angle still exists between it and the PV panels. To ensure success, ...



## The Ultimate Guide to Solar Lights and Solar Photovoltaic Lighting Systems

What also matters here is the distance between the artificial light and the solar panel. You should place the panel close to the lamp - 20 inches (51 cm) are okay. Otherwise, ...



## Can You put Solar Panels on a Flat Roof?

Well, the answer is simple. The labour costs for flat roof solar panel installations is lower than a pitched roof. Approximately 10% of the cost of installing solar panel systems is attributed to the cost of labour and safety ...

## Installing Solar Panels Completely Flat

There are advantages and disadvantages to installing solar panels completely parallel to a flat roof vs tilting them up. But the cons outweigh the pros, therefore our best advice for most circumstances is to install solar ...





## **Solar Panels and Flat Roofs: Benefits, Considerations, ...**

By installing solar panels on a flat roof, you can easily position them to face south and set them at the ideal angle, maximizing solar energy generation. Because you can position solar panels at the ideal angle to catch ...

## **Contact Us**

---

For catalog requests, pricing, or partnerships, please visit:  
<https://ssab-proiect.eu>